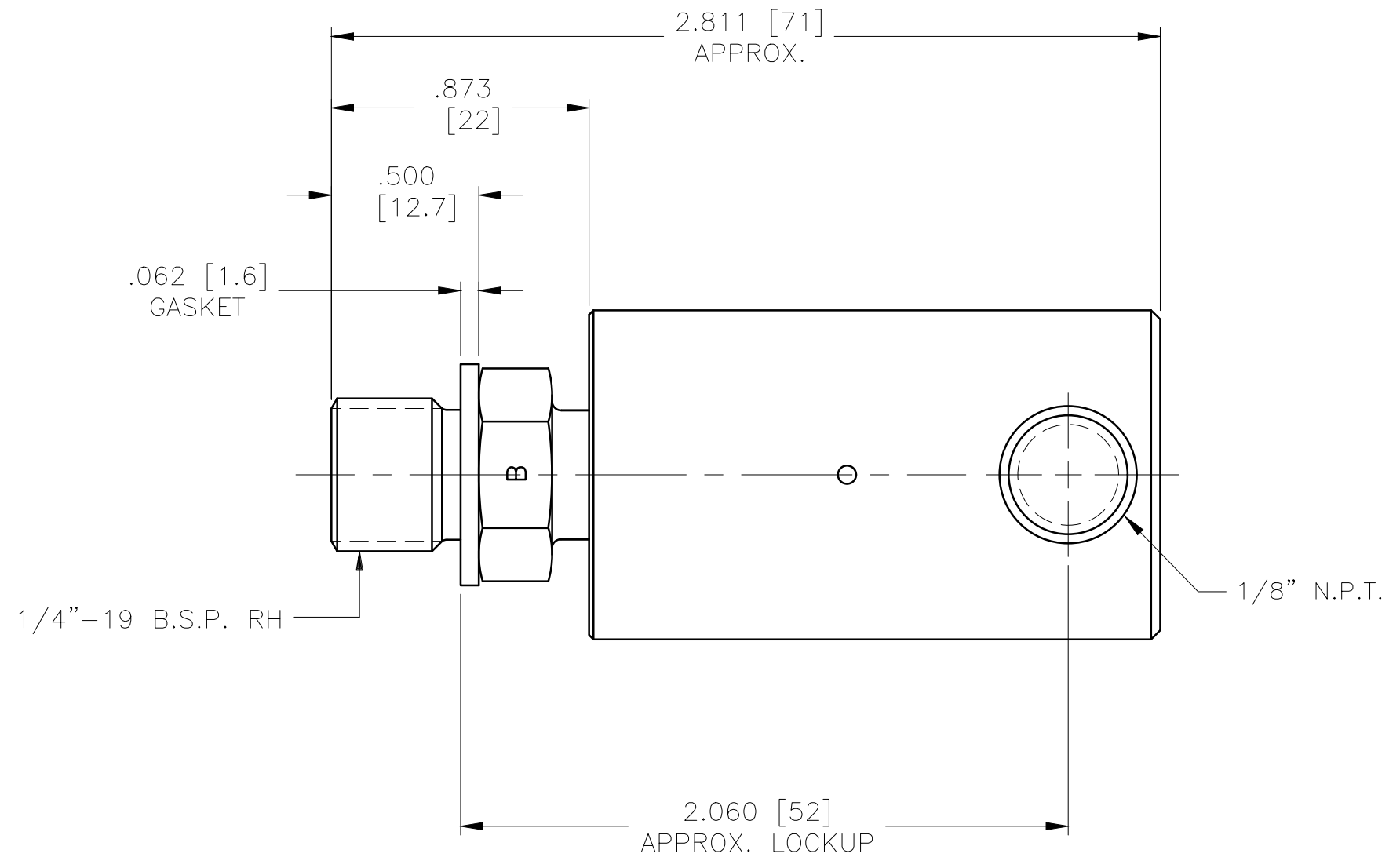
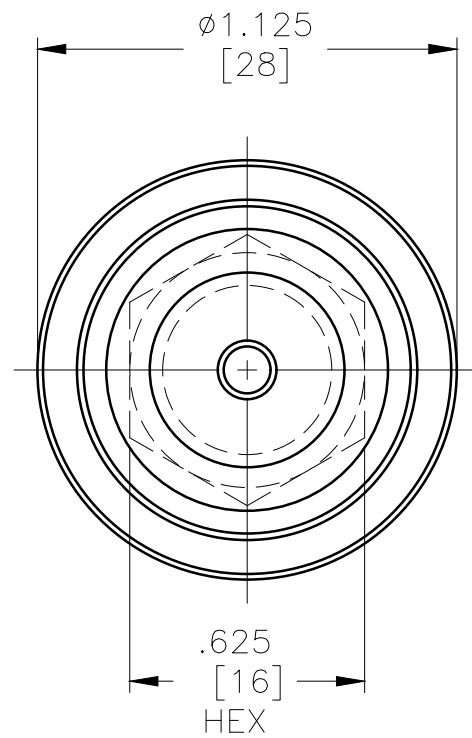


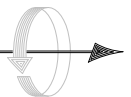
NOTES:

1 - WHEN ORDERING FROM DEUBLIN USE PART NUMBER 1005-057-049.



| OPERATING DATA | | |
|-------------------|--------------------|----------|
| MEDIA | GREASE & HYDRAULIC | |
| MAX HYD. PRESSURE | 1500 PSI | 103 bar |
| MAX SPEED | 3500 RPM | 3500/min |
| MAX TEMPERATURE | 250°F | 121°C |

CONFIDENTIAL
THIS DOCUMENT CONTAINS PROPRIETARY INFORMATION AND IS NOT TO BE TRANSMITTED, REPRODUCED, USED OR DISCLOSED TO ANYONE WITHOUT THE WRITTEN PERMISSION OF THE DEUBLIN COMPANY.

| | | | | | | | | | |
|--|-----------------|--------|-------|------|--|-------|-----|----------|---|
| | | | | | EQUIPMENT REF: | SCALE | 2:1 | DWG SIZE | B |
| | | | | | | DRN | RM | 02/05/03 | |
| | | | | | | ENGR | | | |
| | | | | | | APPD | | | |
| | | | | | UNLESS OTHERWISE SPECIFIED: | | | | |
| | | | | | 1. UNTOLERANCED DIMENSIONS ±.010 | | | | |
| | | | | | 2. MACHINED DIAS CONCENTRIC WITHIN .005 T.I.R. | | | | |
| | | | | | 3. COUNTERSINK TAPPED HOLES TO FIRST THREAD | | | | |
| | | | | | 4. REMOVE BURRS AND SHARP CORNERS .010 MAX | | | | |
| | | | | | 5. ANGLE TOLERANCE ± 1/2° | | | | |
| | | | | | 6. ALL DIMENSIONS ARE FINISHED | | | | |
| | | | | | 7. DIP PARTS IN CORROSION PREVENTATIVE OIL | | | | |
| A | ADDED FAI LAYER | 000708 | 04/08 | JK | | | | | |
| LET. | REVISION | ECO | DATE | SIGN | | | | | |
|  DEUBLIN COMPANY WAUKEGAN, ILLINOIS, U.S.A. | | | | | | | | | |
| TITLE: INTERFACE CONTROL DRAWING FOR UNION 1005-057-049 | | | | | | | | | |
| NO. 1005-057-049-IC C.A.D DRAWING | | | | | | | | | |