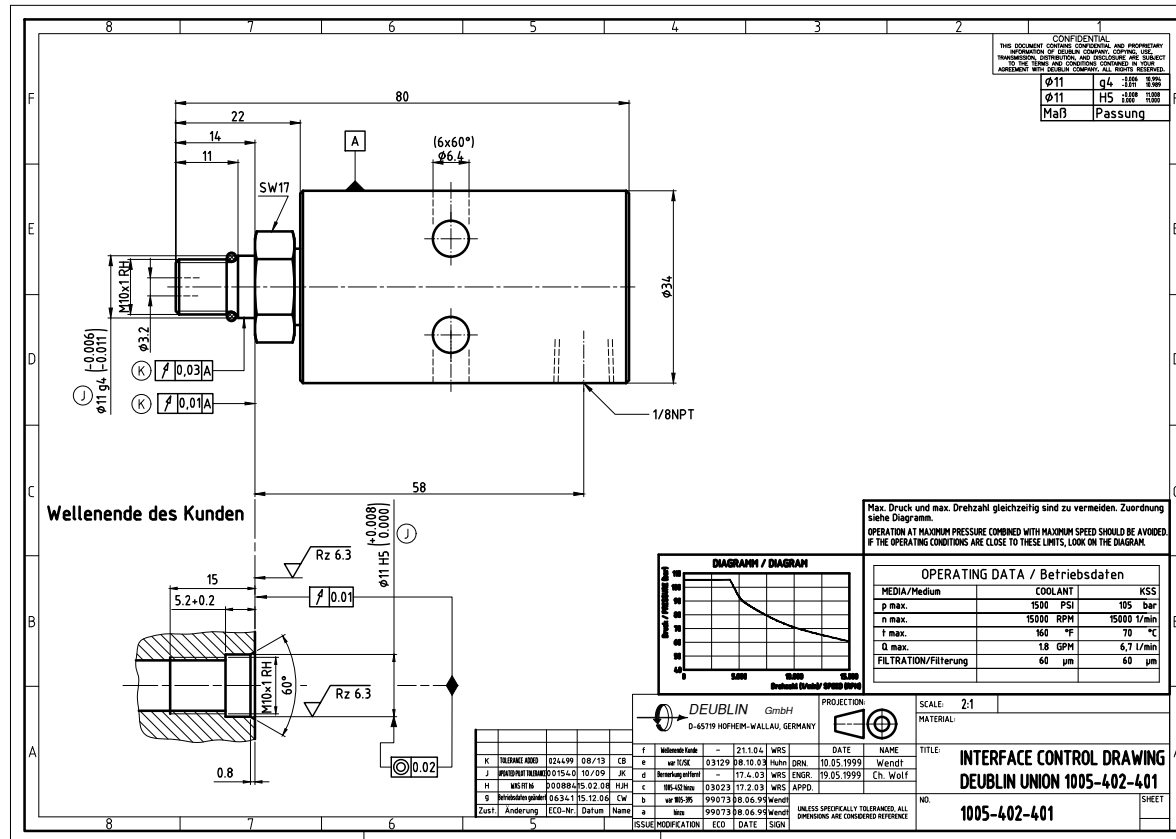


CONFIDENTIAL

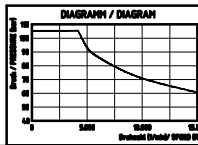
CONFIDENTIAL
THIS DOCUMENT CONTAINS CONFIDENTIAL AND PROPRIETARY INFORMATION OF DEUBLIN. IT IS TO BE KEPT SECRET AND NOT TO BE REPRODUCED OR DISCLOSED TO ANY OTHER PERSONS WITHOUT DEUBLIN'S WRITTEN PERMISSION.

φ11	q4	H5	H7
Maß	Passung		



Wellenende des Kunden

Max. Druck und max. Drehzahl gleichzeitig sind zu vermeiden. Zuordnung siehe Diagramm.
OPERATION AT MAXIMUM PRESSURE COMBINED WITH MAXIMUM SPEED SHOULD BE AVOIDED IF THE OPERATING CONDITIONS ARE CLOSE TO THESE LIMITS, LOOK ON THE DIAGRAM.



MEDIA/Medium	COOLANT	KES
p max.	1500 PSI	105 bar
n max.	15000 RPM	15000 1/min
t max.	160 °F	70 °C
Q max.	1.8 GPM	6.7 l/min
FILTRATION/Filterung	60 µm	60 µm

DEUBLIN GmbH D-65719 HORHEM-WALLAU, GERMANY		PROJECTION 	SCALE: 2:1 MATERIAL:
f. Wolfgang e. Wolfgang j. Wolfgang h. Wolfgang g. Wolfgang a. Wolfgang	- 21.10.04 WRS 03129 08.10.03 Huhn 17.4.03 WRS 03023 17.2.03 WRS 99073 08.06.99 WRS 99073 08.06.99 WRS	DATE 10.05.1999 10.05.1999 17.2.03 08.06.99 08.06.99	NAME WRS WRS WRS WRS WRS
Zust. / Änderung ECO-Nr. Datum Name		TITLE INTERFACE CONTROL DRAWING DEUBLIN UNION 1005-402-401	
ISSU/MODIFICATION ECO DATE SIGN		NO. 1005-402-401 SHEET	