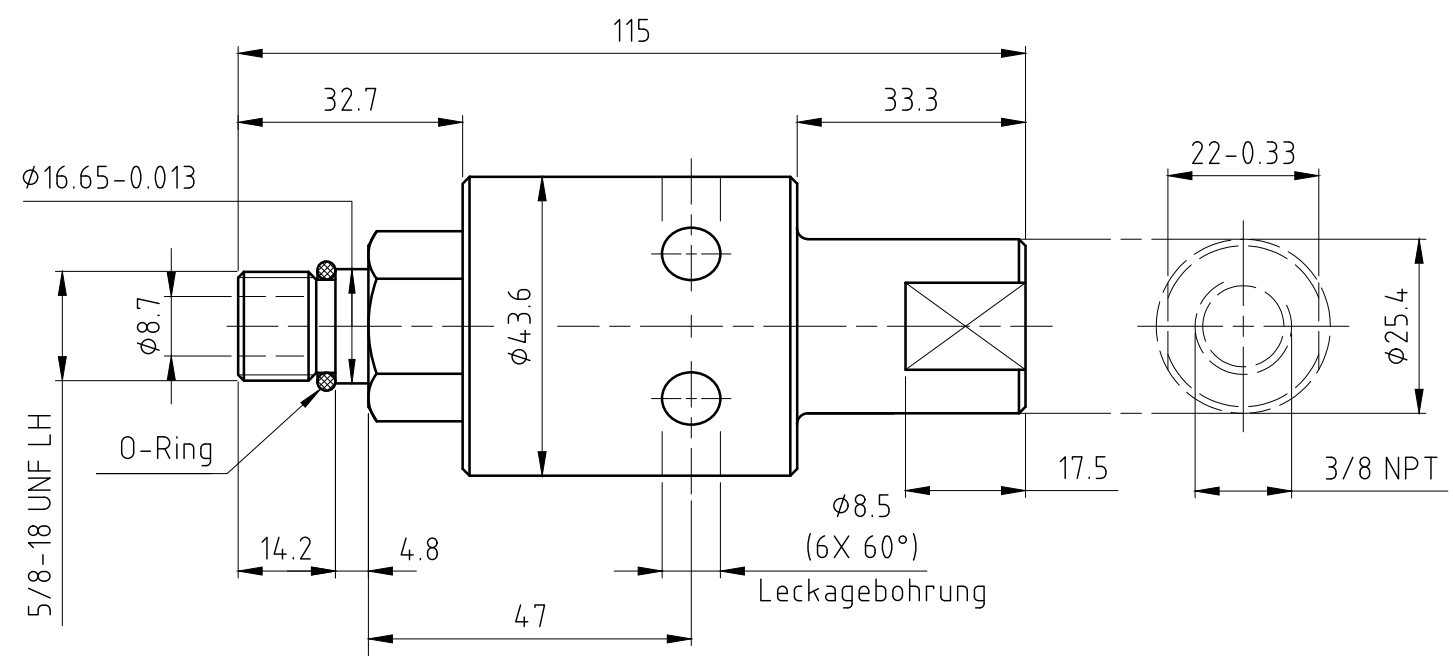


CONFIDENTIAL

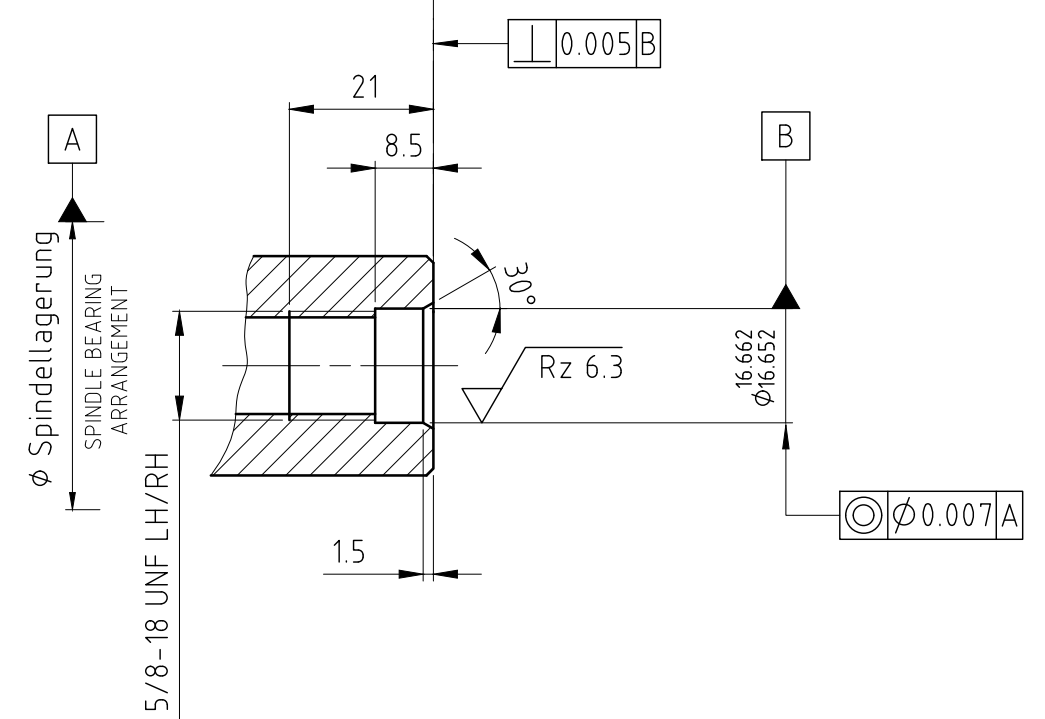
THIS DOCUMENT CONTAINS CONFIDENTIAL AND PROPRIETARY INFORMATION OF DEUBLIN COMPANY. COPYING, USE, TRANSMISSION, DISTRIBUTION, AND DISCLOSURE ARE SUBJECT TO THE TERMS AND CONDITIONS CONTAINED IN YOUR AGREEMENT WITH DEUBLIN COMPANY. ALL RIGHTS RESERVED.

NOTES:

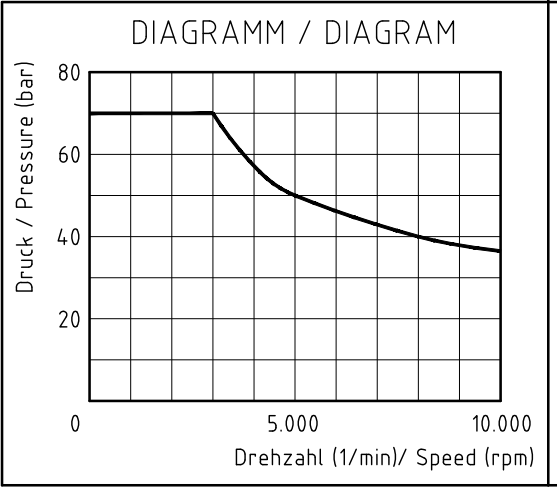
1 - WHEN ORDERING FROM DEUBLIN USE PART NUMBER: 1116-600-059.



Spindelende des Kunden
CUSTOMER'S SPINDLE END



Max. Druck und max. Drehzahl gleichzeitig sind zu vermeiden. Zuordnung siehe Diagramm.
OPERATION AT MAXIMUM PRESSURE COMBINED WITH MAXIMUM SPEED SHOULD BE AVOIDED. IF THE OPERATING CONDITIONS ARE CLOSE TO THESE LIMITS, LOOK ON THE DIAGRAM.



OPERATING DATA / Betriebsdaten		
MEDIA/Medium	COOLANT	KSS
p max.	1000 PSI	70 bar
n max.	10000 RPM	10000 1/min
t max.	160 °F	70 °C
Q max.	13.2 GPM	50 l/min
FILTRATION/Filterung	60 µm	60 µm

<p>DEUBLIN COMPANY WAUKEGAN, ILLINOIS, U.S.A.</p>		<p>PROJECTION:</p>	<p>SCALE: 1:1</p>												
<table border="1"> <tr> <td>DRN.</td> <td>03/14/08</td> <td>NAME</td> <td>N. Reyna</td> </tr> <tr> <td>ENGR.</td> <td>03/14/08</td> <td></td> <td>S. Stasi</td> </tr> <tr> <td>APPD.</td> <td></td> <td></td> <td></td> </tr> </table>		DRN.	03/14/08	NAME	N. Reyna	ENGR.	03/14/08		S. Stasi	APPD.				<p>TITLE: INTERFACE CONTROL DRAWING FOR DEUBLIN UNION</p>	
DRN.	03/14/08	NAME	N. Reyna												
ENGR.	03/14/08		S. Stasi												
APPD.															
<p>UNLESS SPECIFICALLY TOLERANCED, ALL DIMENSIONS ARE CONSIDERED REFERENCE</p>		<p>NO. 1116-600-059</p>	<p>SHEET</p>												
ISSUE	MODIFICATION	ECO	DATE												
			SIGN												