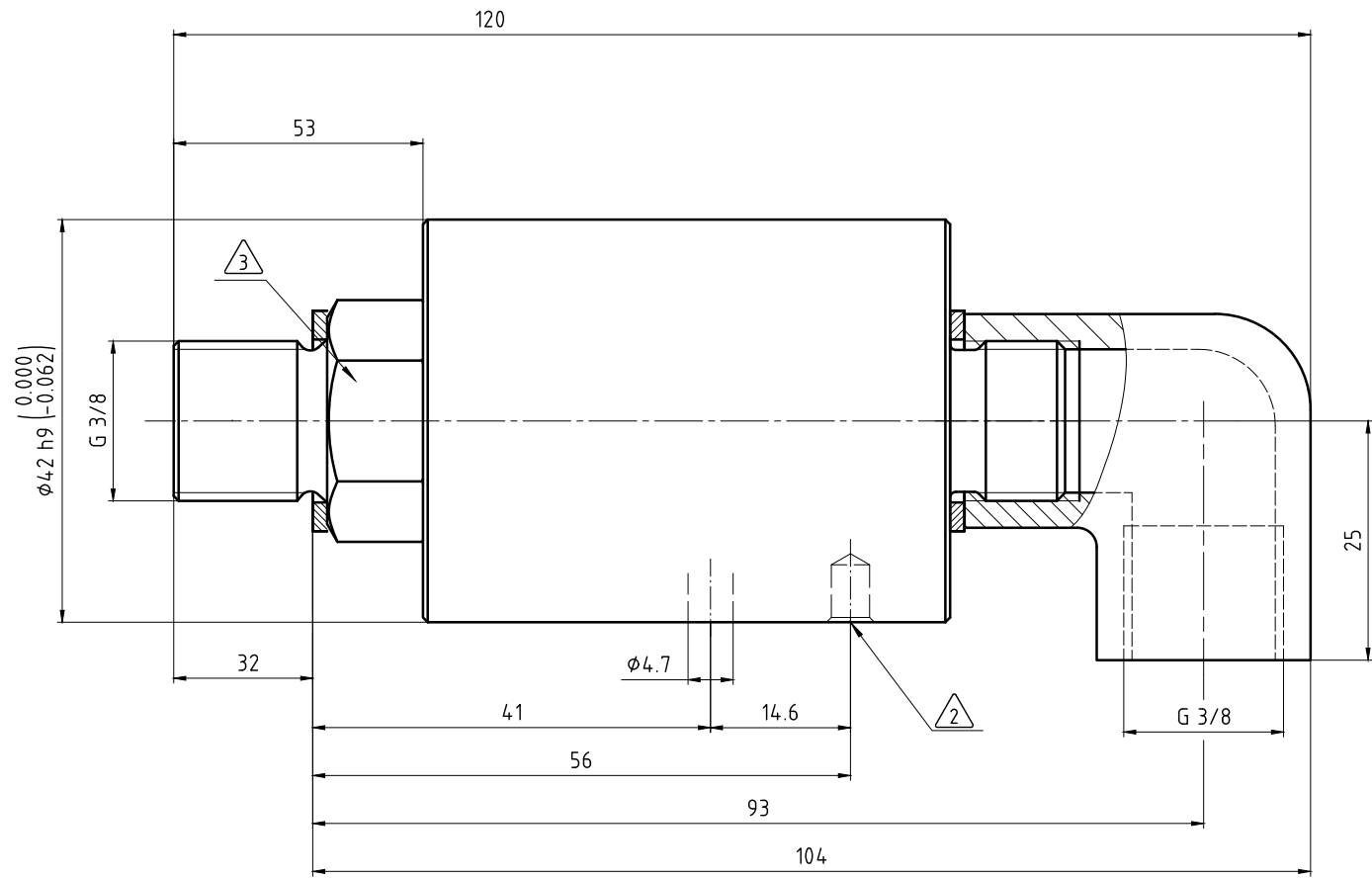


CONFIDENTIAL
 THIS DOCUMENT CONTAINS CONFIDENTIAL AND PROPRIETARY
 INFORMATION OF DEUBLIN COMPANY. COPYING, USE,
 TRANSMISSION, DISTRIBUTION, AND DISCLOSURE ARE SUBJECT
 TO THE TERMS AND CONDITIONS CONTAINED IN YOUR
 AGREEMENT WITH DEUBLIN COMPANY. ALL RIGHTS RESERVED.

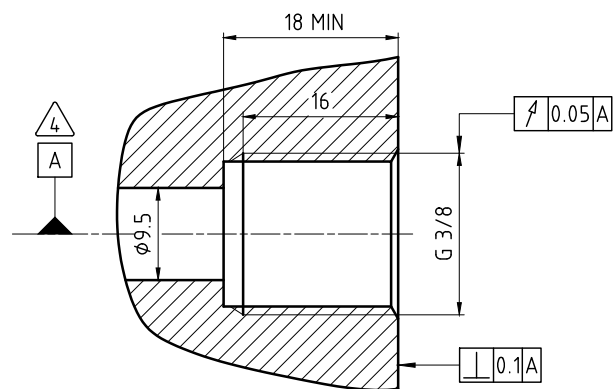
φ42	h9	0.000	42.000
Maß	Passung	-0.062	41.938

NOTES:

- 1 - CONTACT DEUBLIN OR VISIT WWW.DEUBLIN.COM
FOR INSTRUCTION MANUAL: 040-555
- 2 - HOLE FOR SPANNER WRENCH 40/42 AS PER DIN 1810.
- 3 - 22 ACROSS FLATS.
- 4 - SPINDLE BEARING.



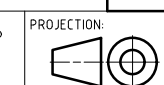
CUSTOMER INTERFACE



OPERATING DATA

MEDIA	HYDRAULIC OIL
MAX. PRESSURE	60 bar
MAX. SPEED	1500 1/min
MAX. TEMPERATURE	120 °C
FILTRATION	5 µm
DRY RUN	NO

AVOID MAX. PRESSURE AND MAX. SPEED AT THE SAME TIME



PROJECTION:
 SCALE: 2:1
 MATERIAL: INTERFACE CONTROL DRAWING

ISSUE	MODIFICATION	ECO	DATE	SIGN

DATE	NAME
DRN. 16.01.2012	CR
ENGR. 16.01.2012	CW
APPD.	

TITLE: DEUBLIN ROTATING UNION
 DEUBLIN Drehdurchführung
 NO. 14037-04-192118

SHEET
 A2

UNLESS SPECIFICALLY TOLERANCED, ALL DIMENSIONS ARE CONSIDERED REFERENCE