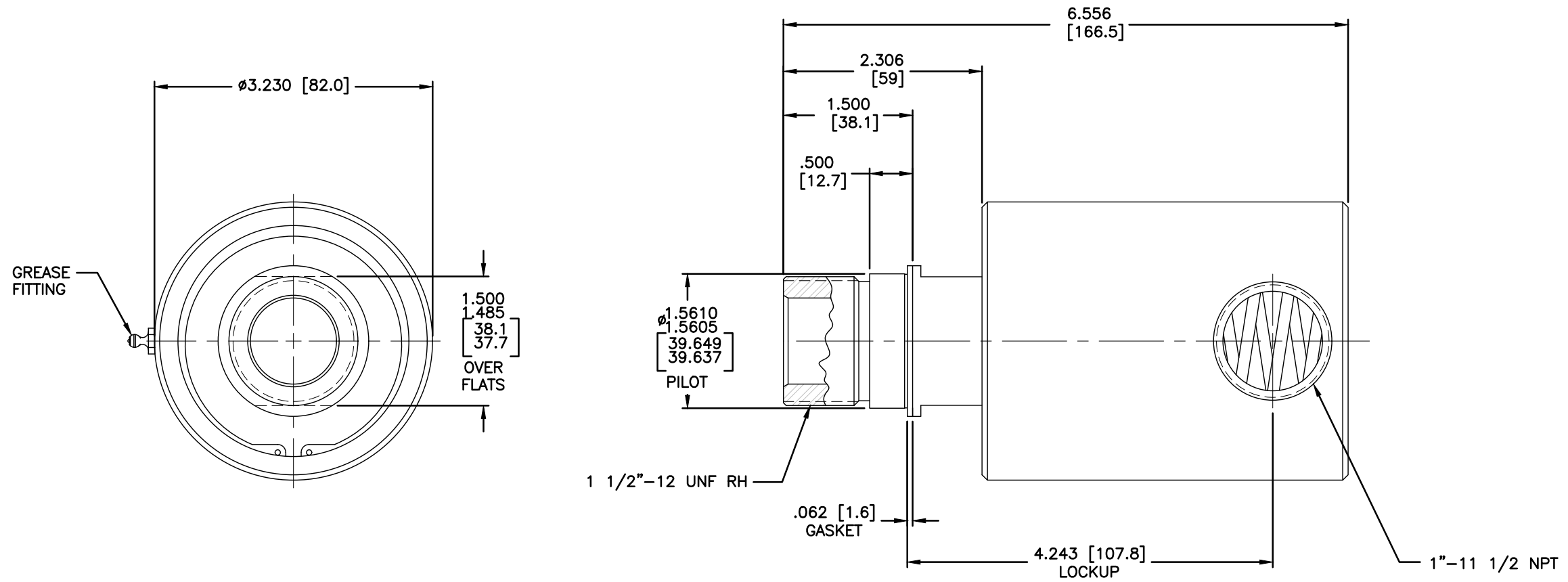


NOTES:

1 - WHEN ORDERING FROM DEUBLIN USE PART NUMBER: 355-021-016.

DWG. NO. 355-021-016-IC



CONFIDENTIAL
 THIS DOCUMENT CONTAINS CONFIDENTIAL AND PROPRIETARY INFORMATION OF DEUBLIN COMPANY. COPYING, USE, TRANSMISSION, DISTRIBUTION, AND DISCLOSURE ARE SUBJECT TO THE TERMS AND CONDITIONS CONTAINED IN YOUR AGREEMENT WITH DEUBLIN COMPANY. ALL RIGHTS RESERVED.

SCALE	FULL	DWG SIZE	C
DRN	RM	01/24/06	
ENGR	ARS	01/24/06	
APPD	ARS	01/24/06	
PART NO.			
355-021-016			
CUSTOMER			
LET.	REVISION	ECO	DATE SIGN

UNLESS SPECIFICALLY TOLERANCED, ALL DIMENSIONS ARE REFERENCE
 DIMENSIONS IN [] ARE IN MILLIMETERS.

DEUBLIN COMPANY
 WAUKEGAN, ILLINOIS, U.S.A.

TITLE: INTERFACE CONTROL
 DRAWING FOR DEUBLIN UNION 355-021-016

DWG. NO. 355-021-016-IC
 C.A.D. DRAWING