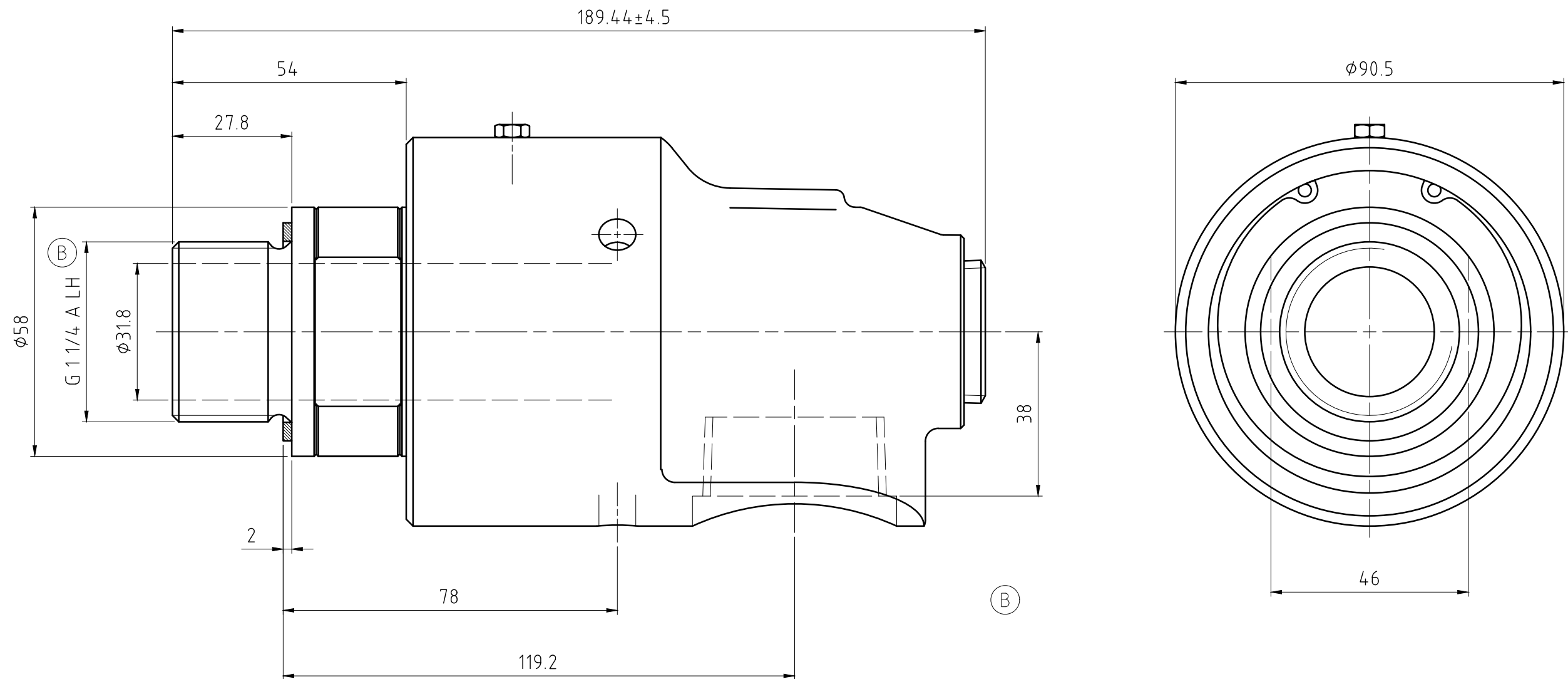


CONFIDENTIAL  
 THIS DOCUMENT CONTAINS CONFIDENTIAL AND PROPRIETARY  
 INFORMATION OF DEUBLIN COMPANY. COPYING, USE,  
 TRANSMISSION, DISTRIBUTION, AND DISCLOSURE ARE SUBJECT  
 TO THE TERMS AND CONDITIONS CONTAINED IN YOUR  
 AGREEMENT WITH DEUBLIN COMPANY. ALL RIGHTS RESERVED.



OPERATING DATA / Betriebsdaten		
media / Medium	water / Wasser	
p max.	150 PSI	10 bar
t max.	200 °F	90 °C
n max.	2500 RPM	2500 1/min
filtration / Filterung	60 µm	
dry run / Trockenlauf	not possible / nicht möglich	

		PROJECTION: 	SCALE: 1:1 MATERIAL: INTERFACE CONTROL DRAWING				
		DATE: 10/09/02 NAME: W.R.S. ENGR. 10/09/02 C. Wolf APPD.	TITLE: <b>DEUBLIN UNION</b>				
B	REVISED DIMENSIONS	011686	10/10	NR	UNLESS SPECIFICALLY TOLERANCED, ALL DIMENSIONS ARE CONSIDERED REFERENCE	NO. <b>527-000-055</b>	SHEET
a	neu gezeichnet	-	10//02	W.R.S.			
ISSUE	MODIFICATION	ECO	DATE	SIGN			