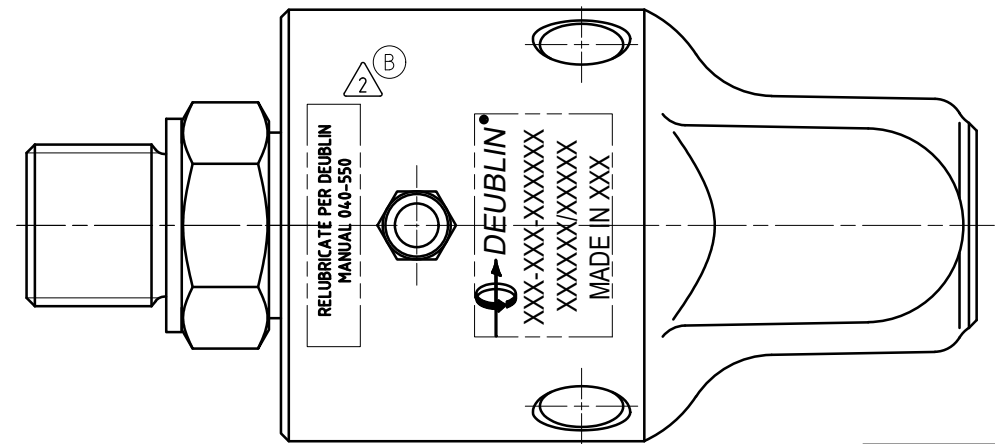
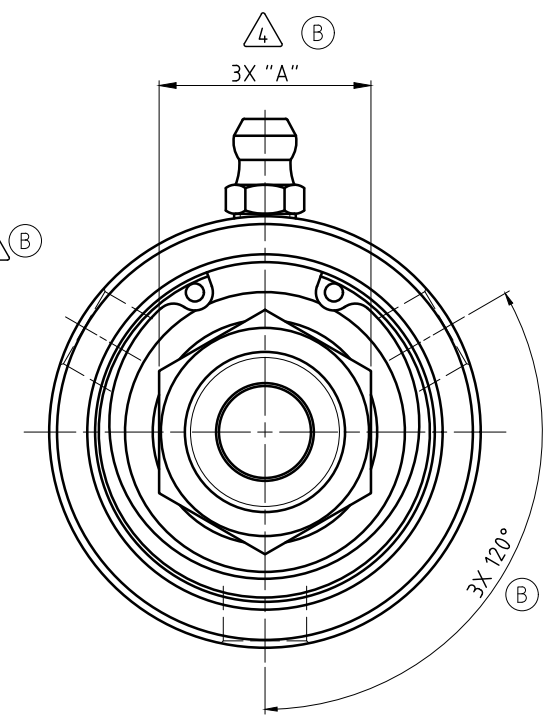
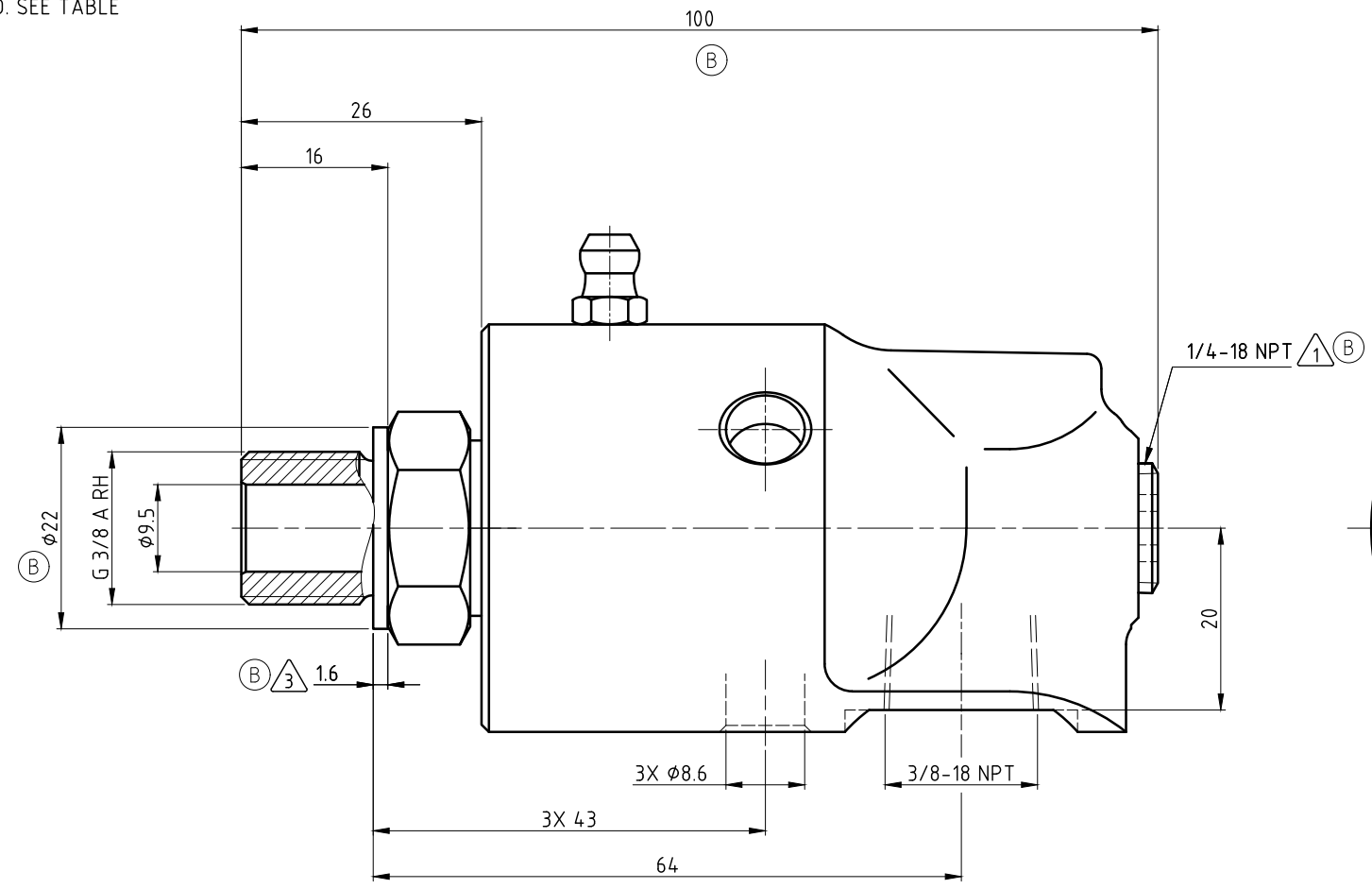
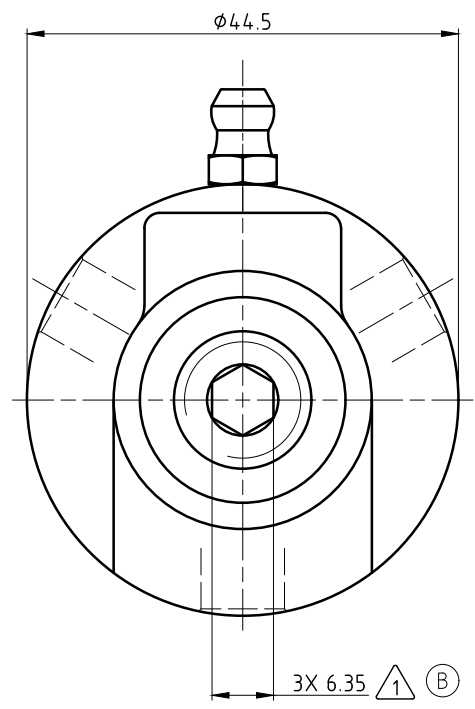


- NOTES:
- ① - PLUG INSTALLED HAND TIGHT FROM FACTORY. IF PORT IS NOT UTILIZED, TIGHTEN BEFORE USE.
 - ② - CONTACT DEUBLIN OR VISIT WWW.DEUBLIN.COM FOR INSTRUCTION MANUAL: 040-550
 - ③ - GASKET THICKNESS. (B)
 - ④ - DEPENDING ON COUNTRY OF ORIGIN, HEX STOCK MAY VARY AS NOTED. SEE TABLE FOR ACCEPTABLE WRENCH SIZES. (B)



OPERATING DATA

| MEDIA | WATER | THERMAL OIL |
|-----------------------------|------------------------|-------------|
| PRESSURE MAX. | 50 bar | 6.6 bar |
| SPEED MAX. | 3500 min ⁻¹ | |
| TEMPERATURE MAX. | 93 °C | |
| DRY RUN (WITHOUT ANY MEDIA) | NO | |
| RECOMMENDED FILTRATION | 60 micron | |

| ④ ③ | HEX SIZES | | WRENCHES | |
|--------|---------------|-------------|----------|------|
| | UNITS | "A" | 22mm | 7/8" |
| | METRIC [mm] | 22-0.33 | ✓ | ✓ |
| | IMPERIAL [in] | 22.23-0.013 | ✗ | ✓ |

| | | | | | |
|--|--|---|------|-------------------------------------|----------|
| | | PROJECTION: | | SCALE: 2:1 | |
| | | | | MATERIAL: INTERFACE CONTROL DRAWING | |
| | | DATE | NAME | TITLE: DEUBLIN UNION | |
| | | DRN. 24.03.2011 | CW | | |
| | | ENGR. 24.03.2011 | FD | | |
| | | APPD. | | | |
| | | UNLESS SPECIFICALLY TOLERANCED, ALL DIMENSIONS ARE CONSIDERED REFERENCE | | NO. 57-050-094 | SHEET A2 |