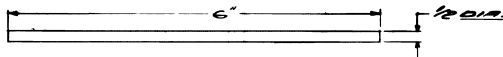


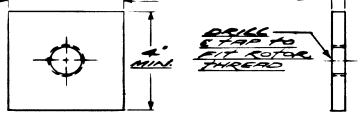
TOOLING REQUIRED

SQUARE PLIERS NO. 8

DISASSEMBLY ROD

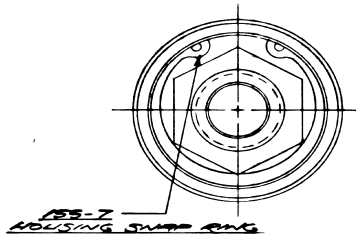


ROTOR ASSEMBLY REMOVAL PLATE
LENGTH TO SPAN FORK
IN BASE OF ARBOR PRESS

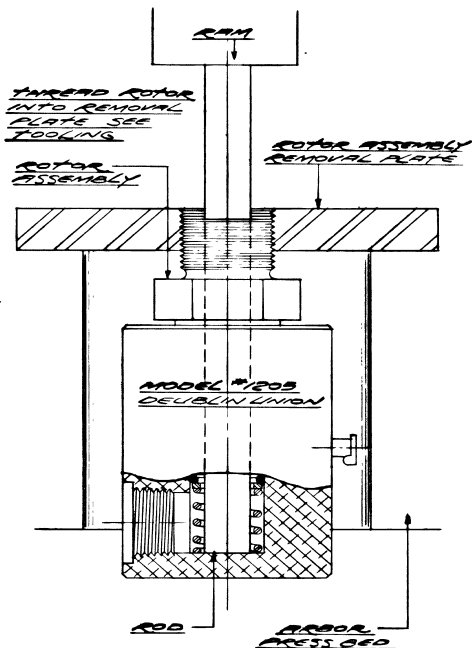


DA-29

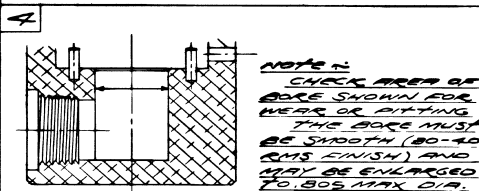
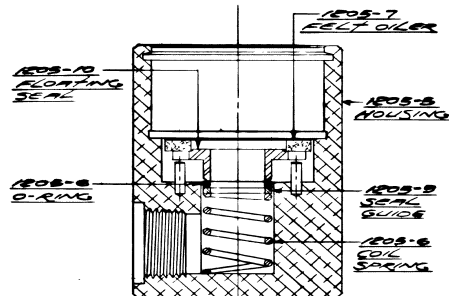
1 REMOVE NO. 155-7 HOUSING SNAP RING



2 REMOVE ROTOR ASSEMBLY



3 REMOVE #1205-7 FELT OILER, #1205-10 FLOATING SEAL, #1205-8 O-RING, #1205-9 SEAL GUIDE AND #1205-6 COIL SPRING FROM #1205-5 HOUSING



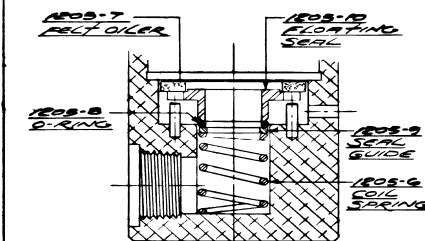
4 WHEN ASSEMBLING DOUBLE ENDING CLEANLINESS IS AN IMPORTANT FACTOR. ALL PARTS MUST BE FREE OF DIRT AND CHIPS. THE PARTS MAY BE CLEANED WITH CHLOROETHENE, CARBON TETRACHLORIDE, ALCOHOL OR ANY GOOD CLEANING SOLVENT.

REBUILDING KIT PARTS LIST

- ROTOR ASSEMBLED**
- (2) 155-10 BALL BEARING
 - (1) 155-11 BEARING SLEEVE
 - (1) 155-4 ROTOR SNAP RING
- HOUSING ASSEMBLED**
- (1) 1205-10 FLOATING SEAL
 - (1) 1205-8 O-RING
 - (1) 1205-9 SEAL GUIDE
 - (1) 1205-6 COIL SPRING
 - (1) 1205-7 FELT OILER

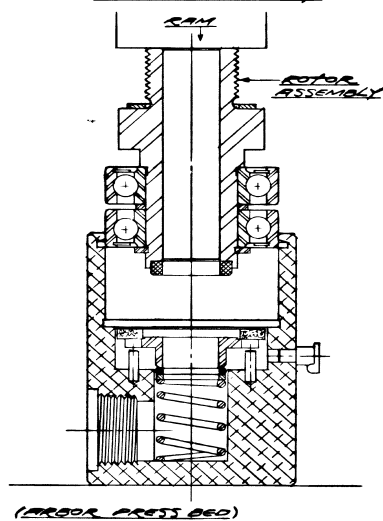
6 CLEAN ROTOR SEAL FACE AND #1205-10 FLOATING SEAL FACE. (SEAL FACES MUST BE FREE OF ALL DIRT AND DUST)

7 ASSEMBLE #1205-6 COIL SPRING, #1205-9 SEAL GUIDE, #1205-8 O-RING, #1205-10 FLOATING SEAL AND #1205-7 FELT OILER

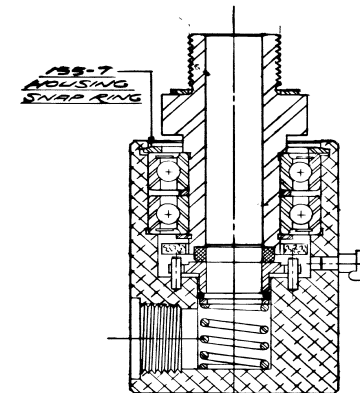


8 OIL #1205-7 FELT OILER AND ENTIRE EDGE OF #1205-10 FLOATING SEAL WITH LIGHT VISCOSITY OIL.

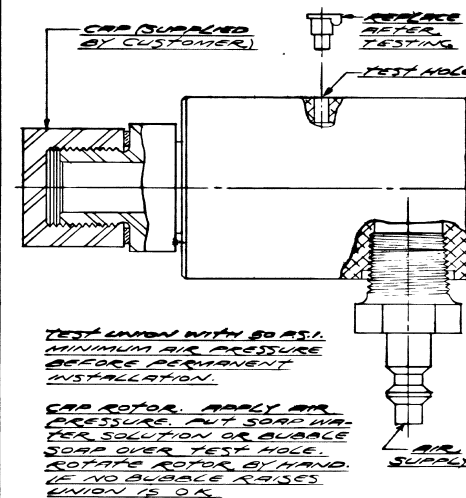
9 ASSEMBLE ROTOR ASSEMBLY



10 ASSEMBLE #155-7 HOUSING SNAP RING



TEST PROCEDURE



TEST UNION WITH 50 P.S.I. MINIMUM AIR PRESSURE BEFORE PERMANENT INSTALLATION.

CAP ROTOR. APPLY AIR PRESSURE. PUT SOAP WATER SOLUTION OR BUBBLE SOAP OVER TEST HOLE. ROTATE ROTOR BY HAND. IS NO BUBBLE RAISED, UNION IS O.K.

G				MATERIAL	SCALE FULL	DEUBLIN COMPANY NORTHBROOK, ILLINOIS, U.S.A. DISASSEMBLY & ASSEMBLY PROCEDURE FOR MODEL #1205 TOLERANCES FRACTIONS ± 010 DECIMALS AS SPECIFIED ANGLES ± 1/2°
F				DRAWN K.S.S.	FILMED <input type="checkbox"/>	
E				DATE	NO	
D				APP'D	DA-29	
C				ALL DIAMETERS TO BE CONCENTRIC WITHIN .005 T I R OR AS SPECIFIED		
B				REMOVE BURRS AND BREAK ALL SHARP CORNERS .010 OR AS SPECIFIED. REMOVE GREASE OR MACHINING OILS		
A						
LET	REVISION	DATE	SIGN			