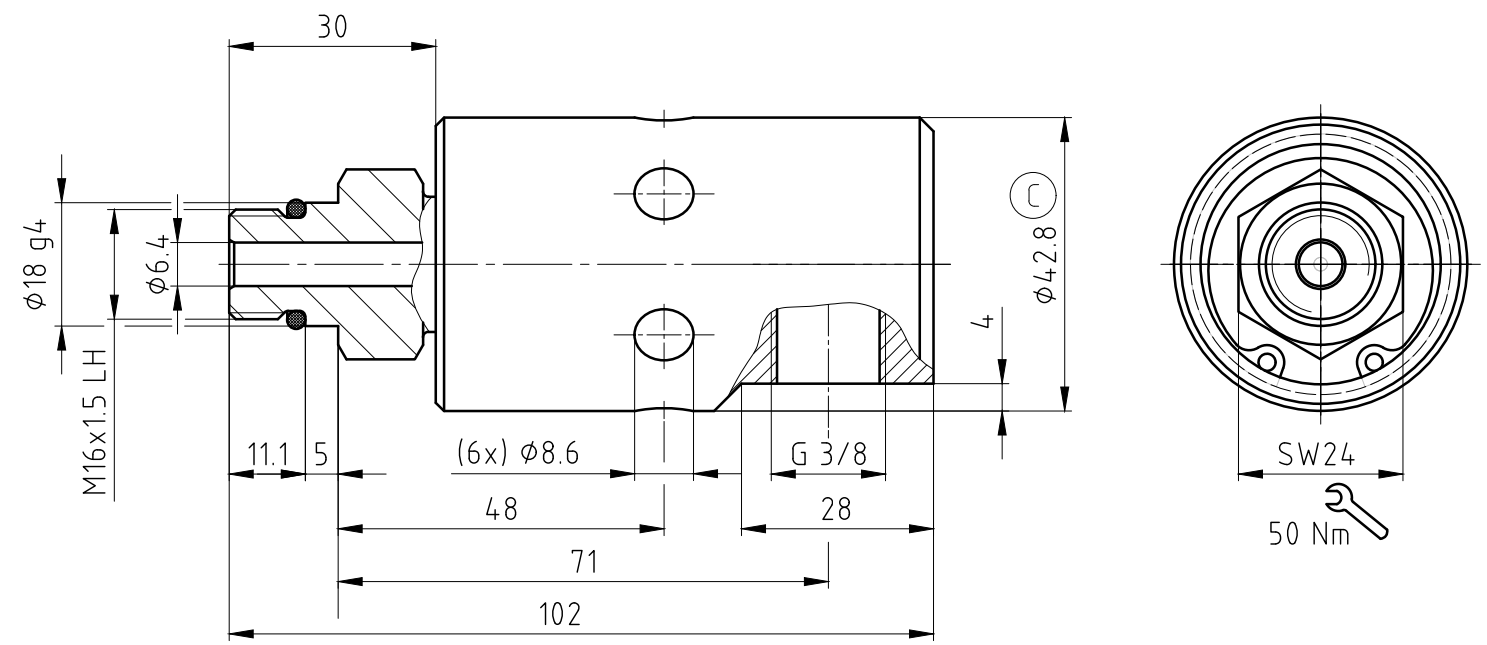
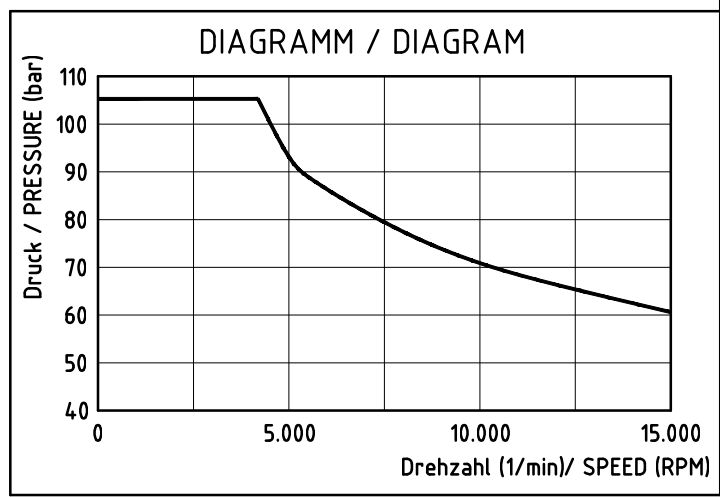


CONFIDENTIAL
 THIS DOCUMENT CONTAINS CONFIDENTIAL AND PROPRIETARY INFORMATION OF DEUBLIN COMPANY. COPYING, USE, TRANSMISSION, DISTRIBUTION, AND DISCLOSURE ARE SUBJECT TO THE TERMS AND CONDITIONS CONTAINED IN YOUR AGREEMENT WITH DEUBLIN COMPANY. ALL RIGHTS RESERVED.

φ18	g4	-0.006	17.994
Maß	Toleranz	-0.011	17.989

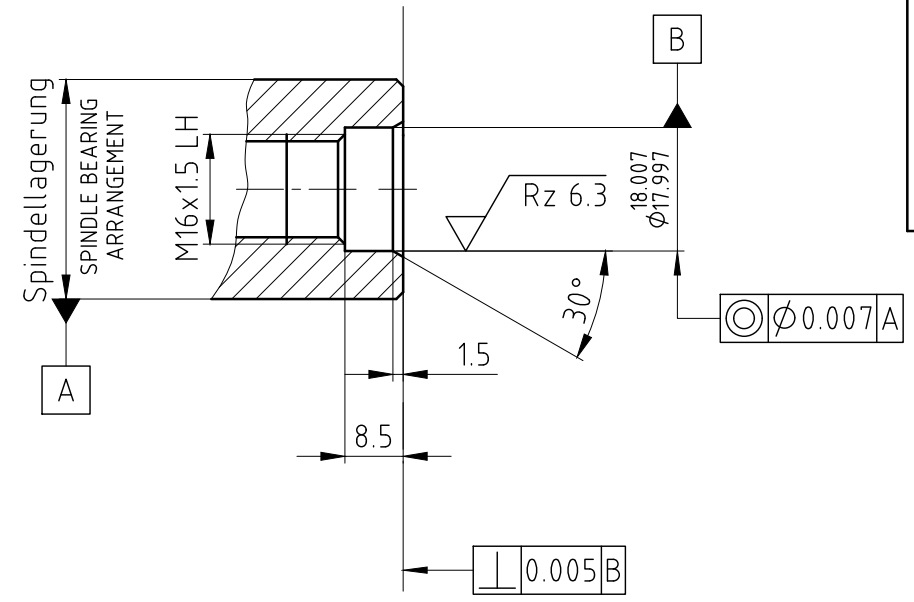


Max. Druck und max. Drehzahl gleichzeitig sind zu vermeiden. Zuordnung siehe Diagramm.
 OPERATION AT MAXIMUM PRESSURE COMBINED WITH MAXIMUM SPEED SHOULD BE AVOIDED. IF THE OPERATING CONDITIONS ARE CLOSE TO THESE LIMITS, LOOK ON THE DIAGRAM.



OPERATING DATA / Betriebsdaten		
MEDIA/Medium	COOLANT	KSS
p max.	1500 PSI	105 bar
n max.	15000 RPM	15000 1/min
t max.	160 °F	70 °C
Q max.	4 GPM	15 l/min
FILTRATION/Filterung	60 µm	60 µm

Spindelende des Kunden
 CUSTOMER'S SPINDLE END



DEUBLIN GmbH D-65719 HOFHEIM-WALLAU, GERMANY		PROJECTION: 	SCALE: 1:1 MATERIAL: INTERFACE CONTROL DRAWING
DATE: 13.02.2002 NAME: Schmid ENGR. 18.03.2002 Ch. Wolf		TITLE: DEUBLIN ROTATING UNION DEUBLIN Drehdurchführung	
C WAS DIAM. 436 031636 01/15 MV APPD. b METRDWG/NO DRY RUN 06041 02.03.06 FD a Diagramm hinzu - 4.4.03 WRS ISSUE MODIFICATION ECO DATE SIGN		NO. 1101-195-343 SHEET A3	