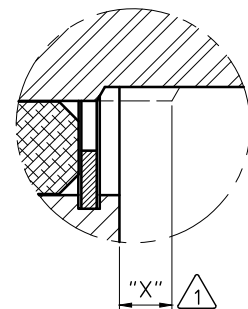
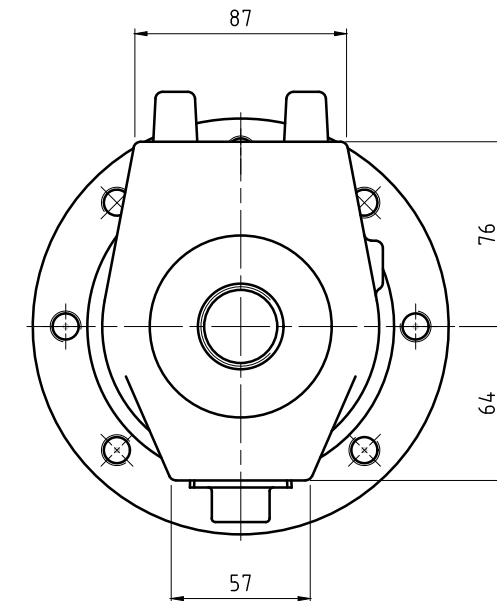
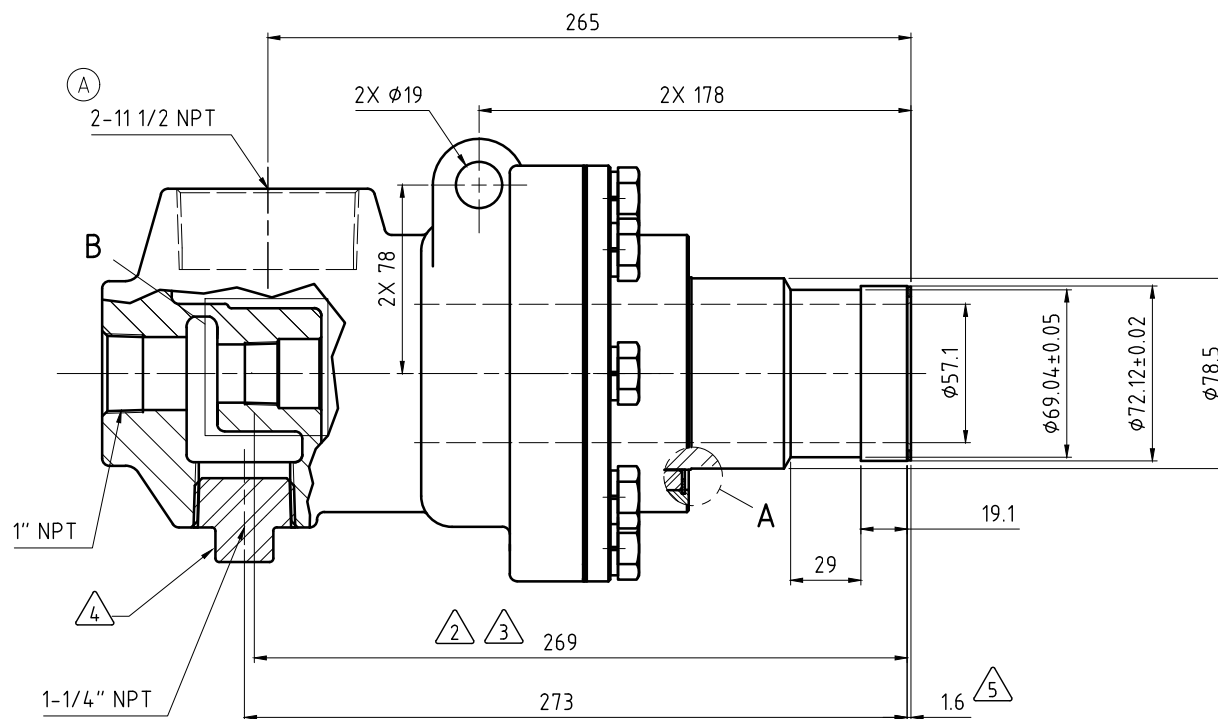
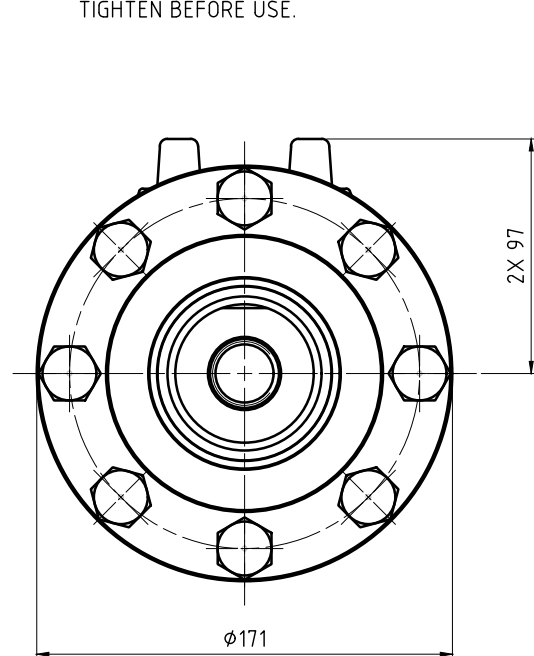


NOTES:

- ① - SEAL MUST BE REPLACED WHEN "X" DIMENSION EXCEEDS 6.3 mm. CONTACT DEUBLIN FOR APPROPRIATE SERVICE KIT.
- ② - PIPE LENGTH INTO UNION.
- ③ - PIPE SUPPLIED BY CUSTOMER.
- ④ - PLUG INSTALLED HAND TIGHT FROM FACTORY. IF PORT IS NOT UTILIZED, TIGHTEN BEFORE USE.

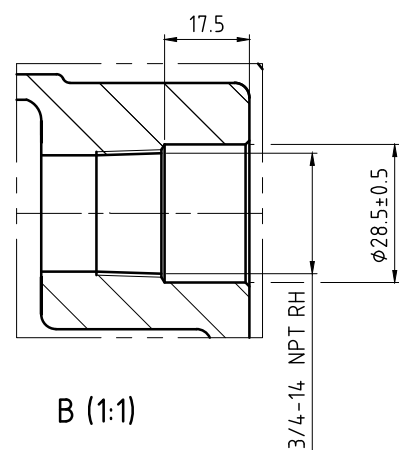
⑤ - GASKET THICKNESS.

⑥ - FLANGE PARTS SUPPLIED BY CUSTOMER; FLANGE KIT 10-64037-43 MAY BE PURCHASED SEPARATELY.

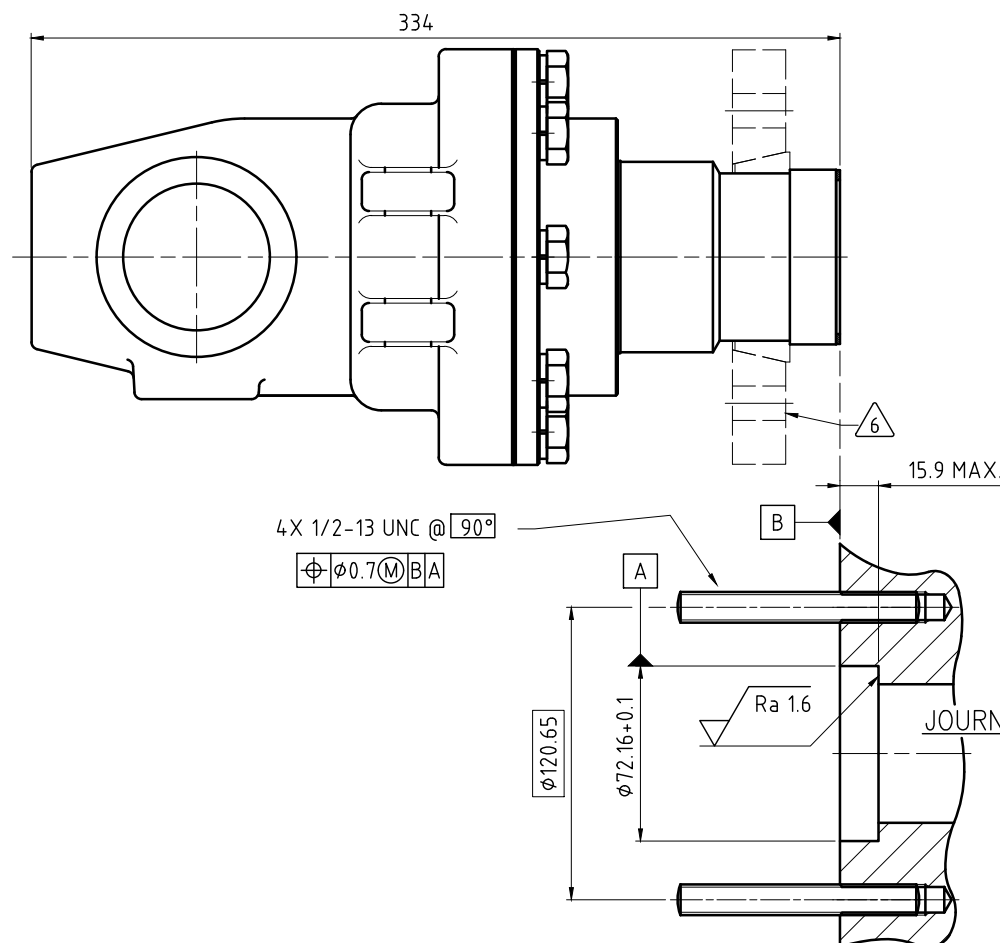


"X" SEAL WEAR DETAIL

A (5:1)



B (1:1)



JOURNAL END DETAIL

OPERATING DATA		
MEDIA		STEAM
PRESSURE	MAXIMUM	15.5 bar
TEMPERATURE	MAXIMUM	203 °C
SPEED	MAXIMUM	350 min <sup>-1</sup>
DRY RUN		NO

		PROJECTION:	SCALE: 1:2
		DATE: 08/21/2015 ENGR: 08/25/2015 APPD.	NAME: LGALINDO LFREED
MATERIAL: INTERFACE CONTROL DRAWING			TITLE: UNION TYPE C FIXED SIPHON NPT PORTS 2 1/2" QC ROTOR
NO. BC-54357-40-62			SHEET A2
A REVISION ISSUE	036854 ECO	03/16 DATE	DO SIGN
UNLESS SPECIFICALLY TOLERANCED, ALL DIMENSIONS ARE CONSIDERED REFERENCE			