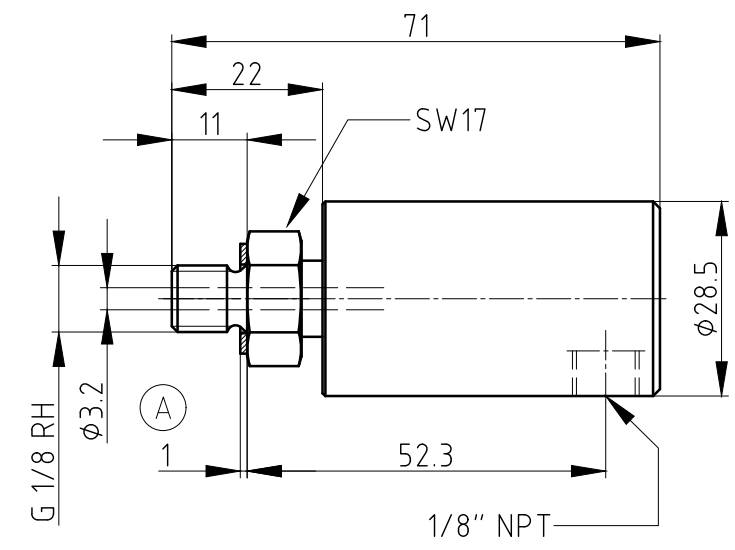
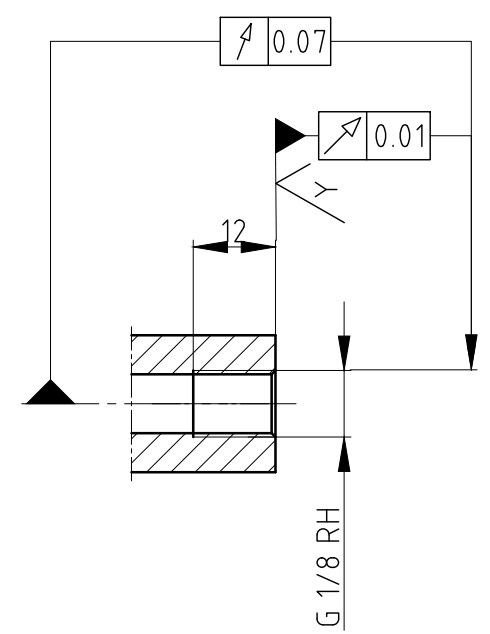


CONFIDENTIAL
 The reproduction, distribution and utilization of this document as well as the communication of its contents to others without express authorization is prohibited. Offenders will be held liable for the payment of damages. All rights reserved in the event of the grant of a patent, utility model or design.



w	12.5	Rz=63
x	3.2	Rz=20
y	0.8	Rz=6.3
z	0.1	Rz=1

OPERATING DATA / Betriebsdaten		
MEDIA/Medium	air / hydraulik	Luft/Hydraulik
p max.	150/1000 PSI	10/70 bar
n max.	3500 RPM	3500 1/min
t max.	250 °F	120 °C

		PROJECTION:		SCALE: 1:1	z:\Union\
				MATERIAL: INTERFACE CONTROL DRAWING	
		DATE	NAME	TITLE: DEUBLIN Einführung	
		DRN. 21.08.01	H.-J. Huhn		
		ENGR. 21.08.01	Ch. Wolf		
		APPD.		NO. 1005-020-241	
A	UPDATED BROOKS, ADDED 1mm DM	054624	01/20	RM	UNLESS SPECIFICALLY TOLERANCED, ALL DIMENSIONS ARE CONSIDERED REFERENCE
ISSUE	MODIFICATION	ECO	DATE	SIGN	
					SHEET A3