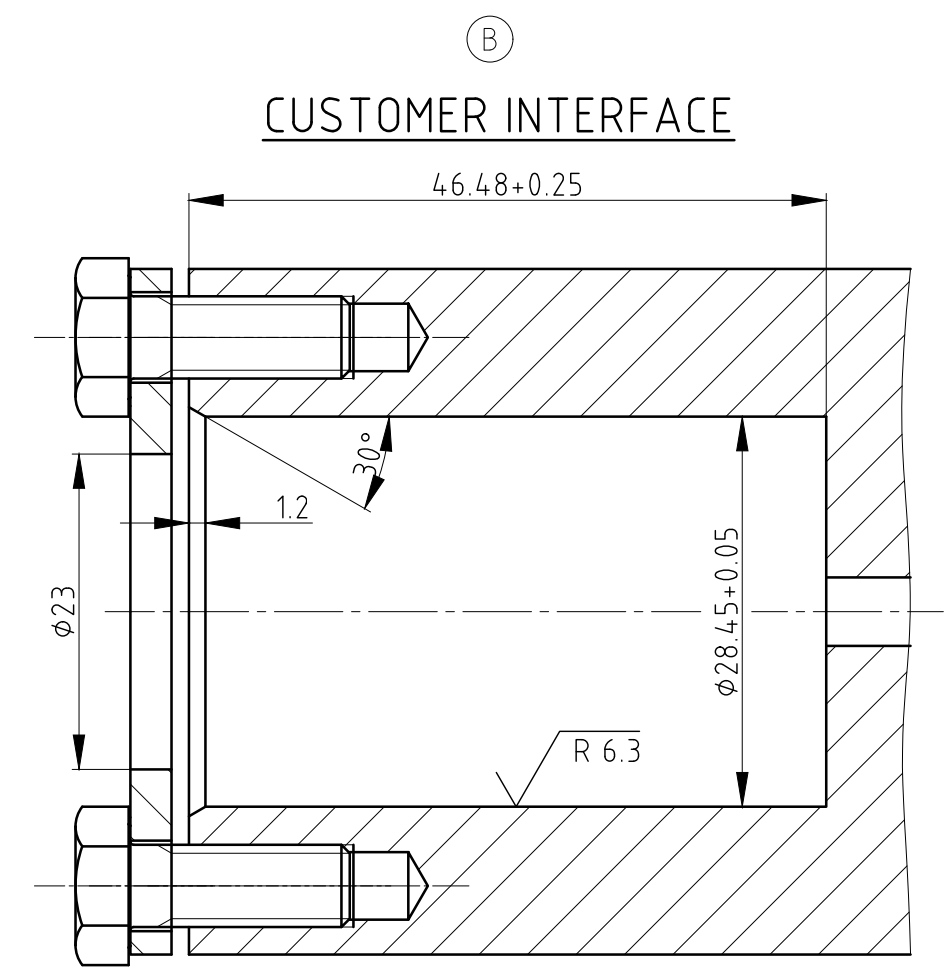
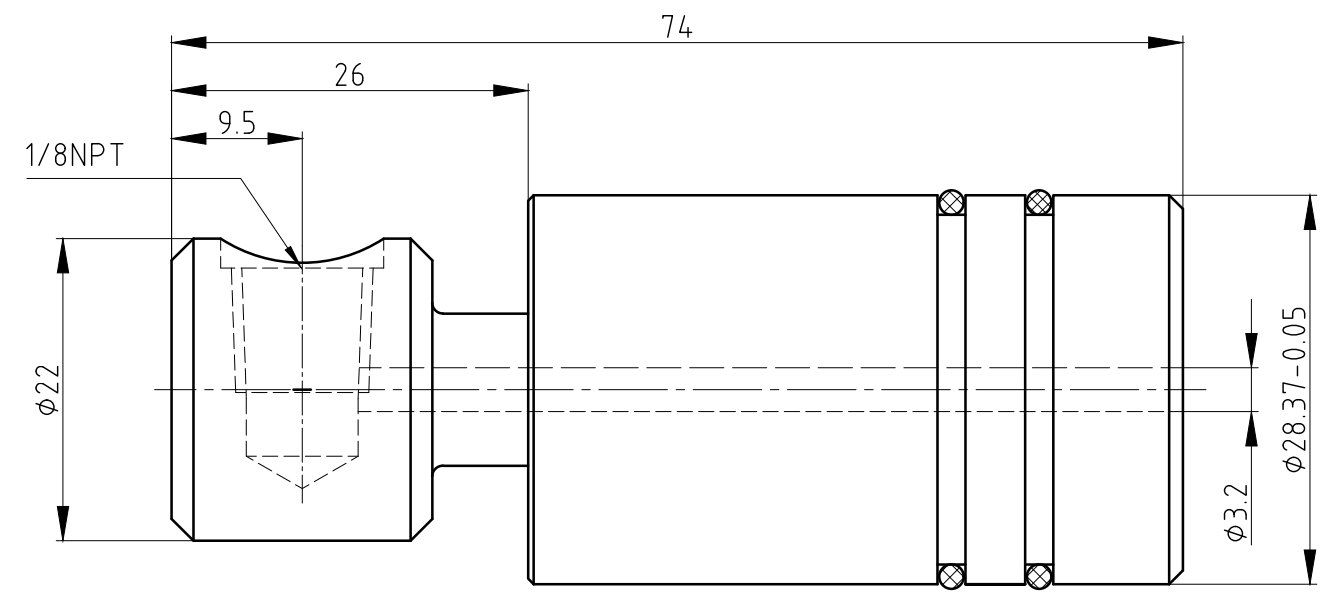


**CONFIDENTIAL**  
 The reproduction, distribution and utilization of this document as well as the communication of its contents to others without express authorization is prohibited. Offenders will be held liable for the payment of damages. All rights reserved in the event of the grant of a patent, utility model or design.



OPERATING DATA / Betriebsdaten		
MEDIA/Medium	hydraulik	Hydraulik
p max.	1000 PSI	70 bar
n max.	3500 RPM	3500 1/min
t max.	250 °F	120 °C

		PROJECTION:		SCALE: 2:1		
		MATERIAL:		INTERFACE CONTROL DRAWING		
		DATE	NAME	TITLE:		
		DRN. 12.05.2006	Ch. Wolf	DEUBLIN ROTATING UNION DEUBLIN Drehdurchführung		
		ENGR. 12.05.2006	F. Dahl			
		APPD.				
B	Was Wellenende des Kunden	054624	01/20	RM	NO. 1005-108-001	SHEET A3
A	ADDED FAI LAYER	000708	04/08	JK		
ISSUE	MODIFICATION	ECO	DATE	SIGN	UNLESS SPECIFICALLY TOLERANCED, ALL DIMENSIONS ARE CONSIDERED REFERENCE	