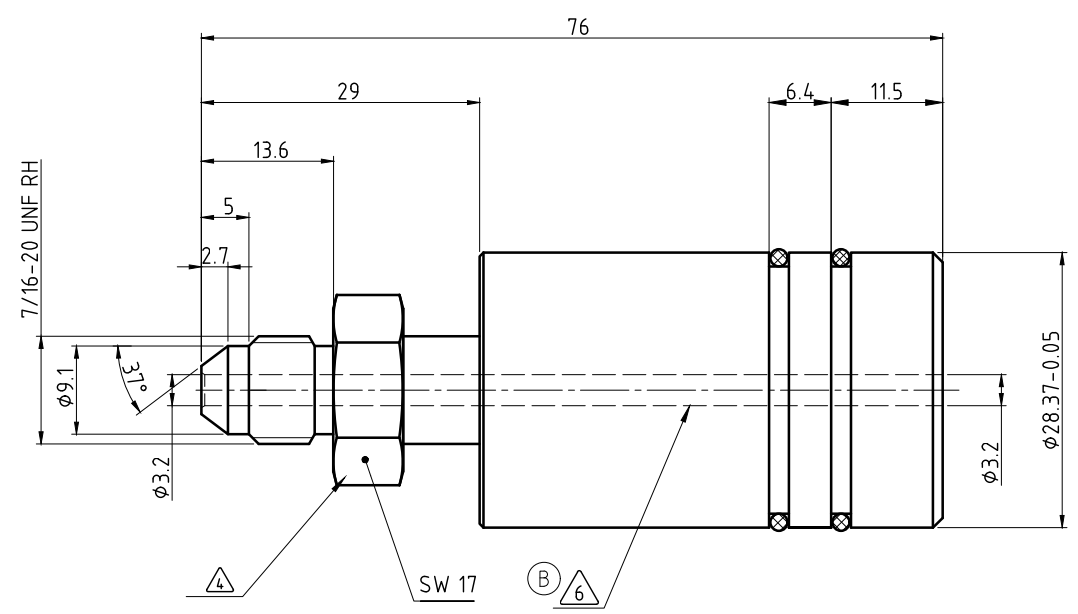


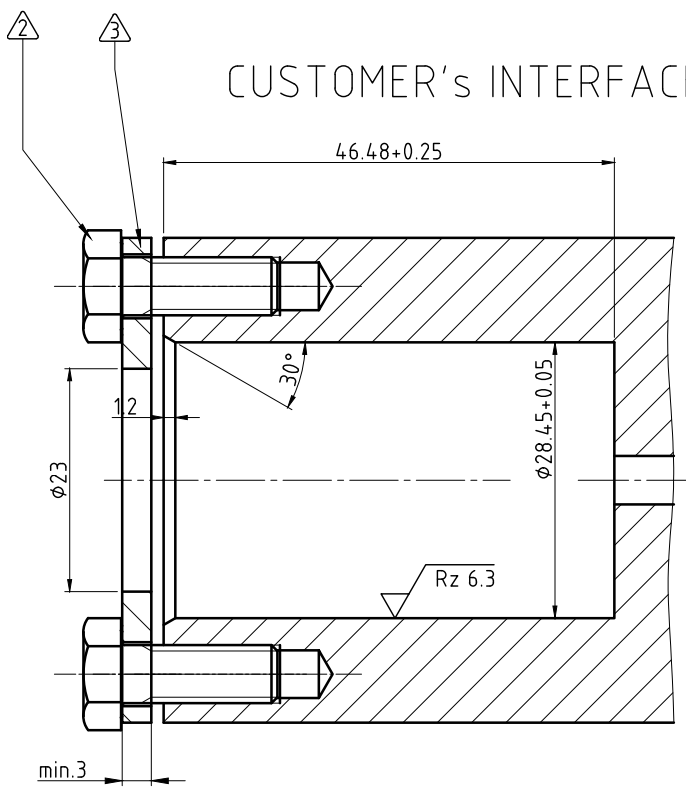
CONFIDENTIAL  
 THIS DOCUMENT CONTAINS CONFIDENTIAL AND PROPRIETARY  
 INFORMATION OF DEUBLIN COMPANY. COPYING, USE,  
 TRANSMISSION, DISTRIBUTION, AND DISCLOSURE ARE SUBJECT  
 TO THE TERMS AND CONDITIONS CONTAINED IN YOUR  
 AGREEMENT WITH DEUBLIN COMPANY. ALL RIGHTS RESERVED.

NOTES:

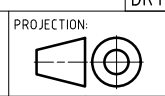
- (A) 1 - CONTACT DEUBLIN OR VISIT WWW.DEUBLIN.COM FOR INSTRUCTION MANUAL: 040-555
- (A) 2 - TORQUE TO 15 +5 Nm. 3X SCREW M6 SUPPLIED BY CUSTOMER.
- (A) 3 - RETAINING PLATE (STEEL) SUPPLIED BY CUSTOMER.
- (A) 4 - TORQUE TO 10 +2 Nm. DO NOT LOCTITE.
- (A) 5 - CLEANING THE INSIDE OR OUTSIDE OF UNION WITH HIGH PRESSURE WATER WILL RESULT IN DAMAGE AND IS NOT PERMITTED.
- (B) 6 - UNION CLEANLINESS PER DEUBLIN ENGINEERING INSTRUCTION 033-4506. THE INDICATED SURFACES ARE TO BE CONSIDERED THE WETTED SURFACES.



CUSTOMER'S INTERFACE



OPERATING DATA	
MEDIA	HYDRAULIC OIL
PRESSURE MAX.	70 bar
SPIKE PRESSURE MAX.	150 bar
SPEED MAX.	3500 min <sup>-1</sup>
TEMPERATURE RANGE	-20 to +90°C
AMBIENT TEMPERATURE RANGE	-30 to +105°C
DRY RUN (WITHOUT ANY MEDIA)	NO



SCALE: 2:1  
 MATERIAL: INTERFACE CONTROL DRAWING

DATE	NAME	TITLE
DRN. 20.08.2010	CB	DEUBLIN ROTATING UNION DEUBLIN Drehdurchführung
ENGR. 23.08.2010	FD	
APPD.		

NO. 1005-108-094  
 SHEET A2

ISSUE	MODIFICATION	ECO	DATE	SIGN
B	ADDED CLEANING NOTE	04-1063	06/18	RMika
A	NOTE CHANGED AND ADDED	015110	09/11	CW

UNLESS SPECIFICALLY TOLERANCED, ALL DIMENSIONS ARE CONSIDERED REFERENCE