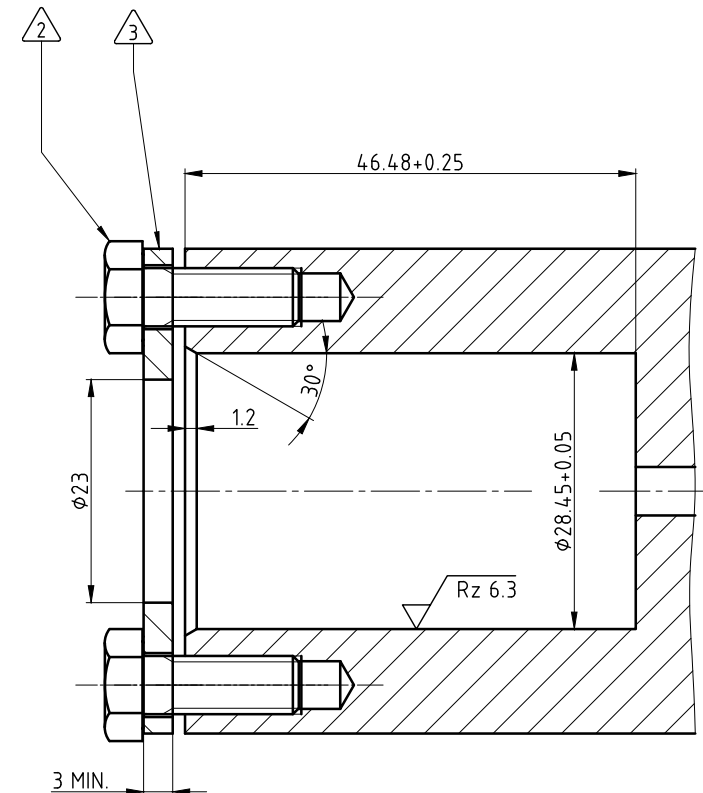
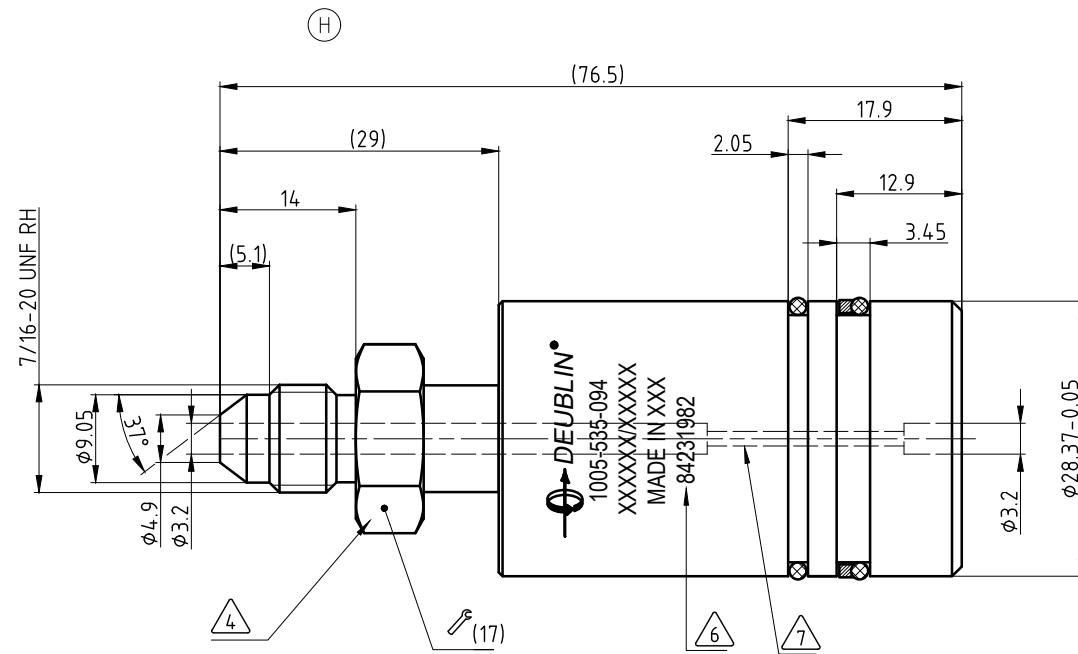


CONFIDENTIAL  
 THIS DOCUMENT CONTAINS CONFIDENTIAL AND PROPRIETARY  
 INFORMATION OF DEUBLIN COMPANY. COPYING, USE,  
 TRANSMISSION, DISTRIBUTION, AND DISCLOSURE ARE SUBJECT  
 TO THE TERMS AND CONDITIONS CONTAINED IN YOUR  
 AGREEMENT WITH DEUBLIN COMPANY. ALL RIGHTS RESERVED.

NOTES:

- 1 - CONTACT DEUBLIN OR VISIT WWW.DEUBLIN.COM  
FOR INSTRUCTION MANUAL: 040-555.
- 2 - TORQUE TO 15+5 Nm. 3X SCREW M6 SUPPLIED BY CUSTOMER.
- 3 - RETAINING PLATE (STEEL) SUPPLIED BY CUSTOMER.
- 4 - TORQUE TO 10+2 Nm. DO NOT LOCTITE.
- 5 - CLEANING THE INSIDE OR OUTSIDE OF UNION WITH HIGH PRESSURE WATER  
WILL RESULT IN DAMAGE AND IS NOT PERMITTED.
- 6 - MARKING: CNH PART NO.
- 7 - UNION CLEANLINESS PER DEUBLIN ENGINEERING INSTRUCTION 033-4506.  
THE INDICATED SURFACES ARE TO BE CONSIDERED THE WETTED SURFACES.



# PRELIMINARY

THIS DRAWING IS IN PROCESS OF CUSTOMER  
APPROVAL; DO NOT MANUFACTURE WITHOUT  
CUSTOMER AND ENGINEERING SIGN-OFF

APPROVED BY CUSTOMER: \_\_\_\_\_ DATE \_\_\_\_\_

APPROVED BY DEUBLIN ENGINEERING \_\_\_\_\_ DATE \_\_\_\_\_

CUSTOMER INTERFACE

OPERATING DATA	
MEDIA	HYDRAULIC OIL
PRESSURE MAX.	110 bar
SPIKE PRESSURE MAX.	210 bar
SPEED MAX.	1600 min <sup>-1</sup>
TEMPERATURE RANGE	-20°... +90°C
AMBIENT TEMPERATURE RANGE	-30°... +105°C
DRY RUN (WITHOUT ANY MEDIA)	NO

<b>DEUBLIN</b> <i>Engineered for Performance</i>		PROJECTION: 	SCALE: 2:1
		MATERIAL: INTERFACE CONTROL DRAWING	TITLE: DEUBLIN ROTATING UNION DEUBLIN Drehdurchführung
		NO. 1005-535-094	SHEET A2
H	ALL DIMS REVISED	D50492	01/19
ISSUE	MODIFICATION	ECO	DATE
		CW	SIGN

UNLESS SPECIFICALLY TOLERANCED, ALL DIMENSIONS ARE CONSIDERED REFERENCE