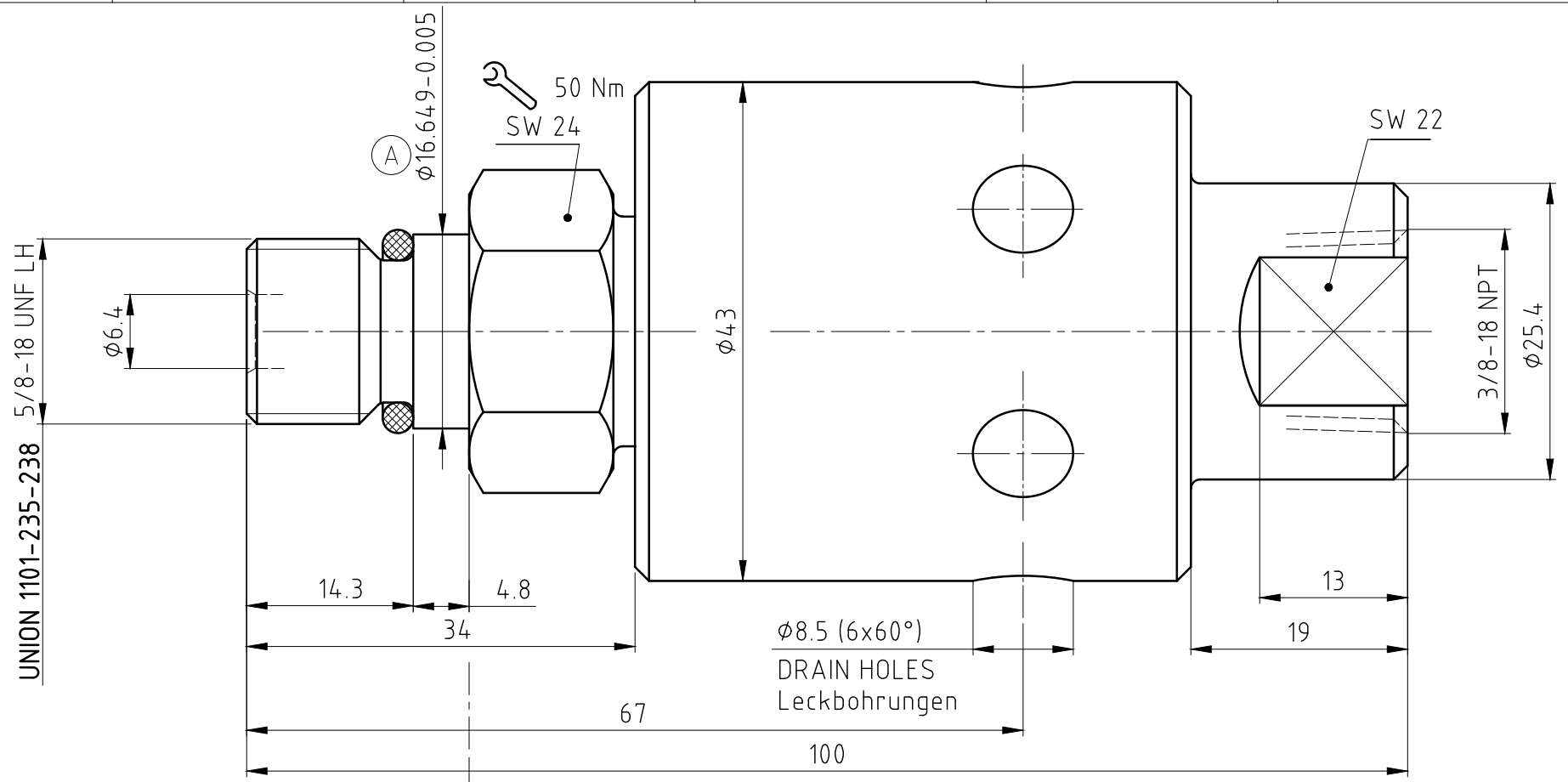
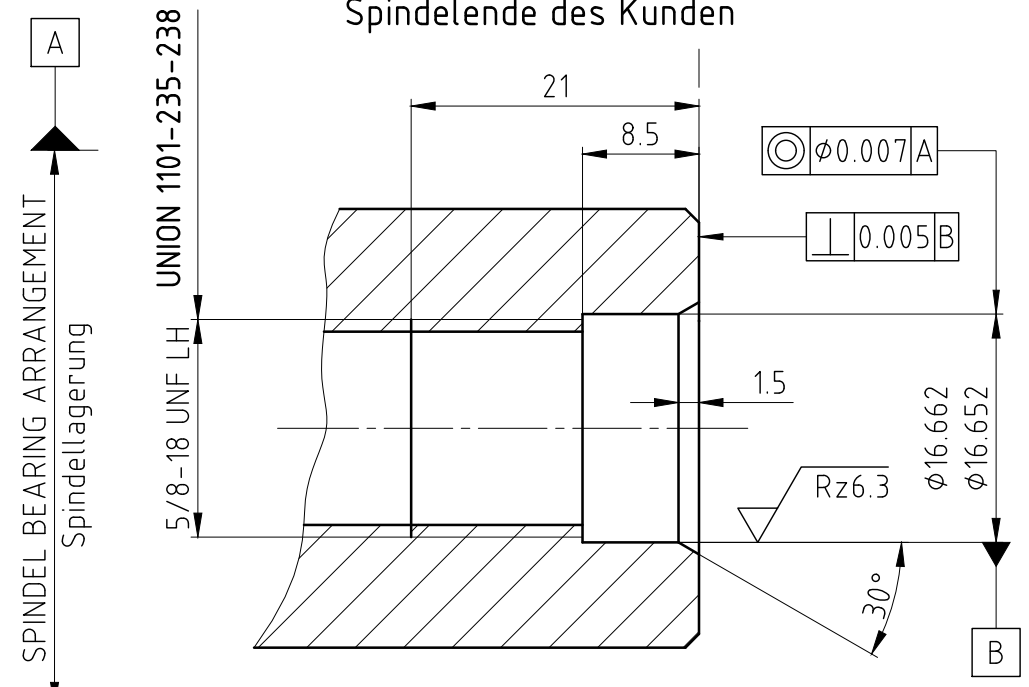


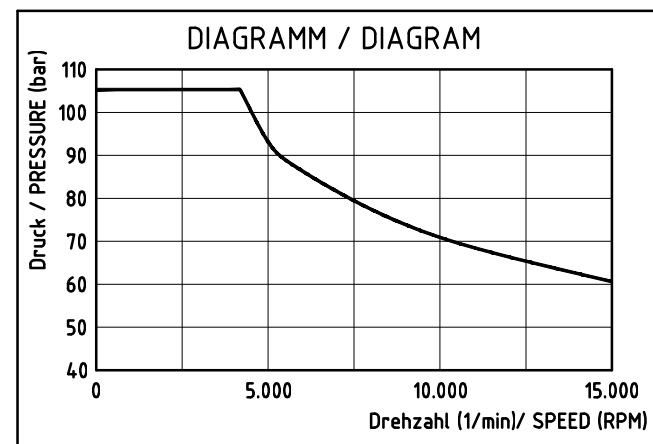
CONFIDENTIAL  
 THIS DOCUMENT CONTAINS CONFIDENTIAL AND PROPRIETARY INFORMATION OF DEUBLIN COMPANY. COPYING, USE, TRANSMISSION, DISTRIBUTION, AND DISCLOSURE ARE SUBJECT TO THE TERMS AND CONDITIONS CONTAINED IN YOUR AGREEMENT WITH DEUBLIN COMPANY. ALL RIGHTS RESERVED.



CUSTOMER'S SPINDLE END  
 Spindelende des Kunden



OPERATION AT MAXIMUM PRESSURE COMBINED WITH MAXIMUM SPEED SHOULD BE AVOIDED. IF THE OPERATING CONDITIONS ARE CLOSE TO THESE LIMITS, LOOK ON THE DIAGRAM.  
 Max. Druck und max. Drehzahl gleichzeitig sind zu vermeiden. Zuordnung siehe Diagramm.



OPERATING DATA / Betriebsdaten		
MEDIA/Medium	COOLANT	KSS
p max.	1500 PSI	105 bar
n max.	15000 RPM	15000 1/min
t max.	160 °F	70 °C
Q max.	4 GPM	15 l/min
FILTRATION/Filterung	60 $\mu$ m	60 $\mu$ m

<b>DEUBLIN GmbH</b> D-65719 HOFHEIM-WALLAU, GERMANY		PROJECTION: 	SCALE: 2:1 MATERIAL: INTERFACE CONTROL DRAWING
DATE: 09.08.06 NAME: H.-J. Huhn ENGR. 09.08.06 H. Schmid APPD.		TITLE: <b>DEUBLIN ROTATING UNION</b> <b>DEUBLIN Drehdurchführung</b>	
NO. 1101-235-238		SHEET A3	
A ISSUE	UPDATED PILOT DIMENSION 001540 MODIFICATION ECO	10/09 DATE	JK SIGN

UNLESS SPECIFICALLY TOLERANCED, ALL DIMENSIONS ARE CONSIDERED REFERENCE