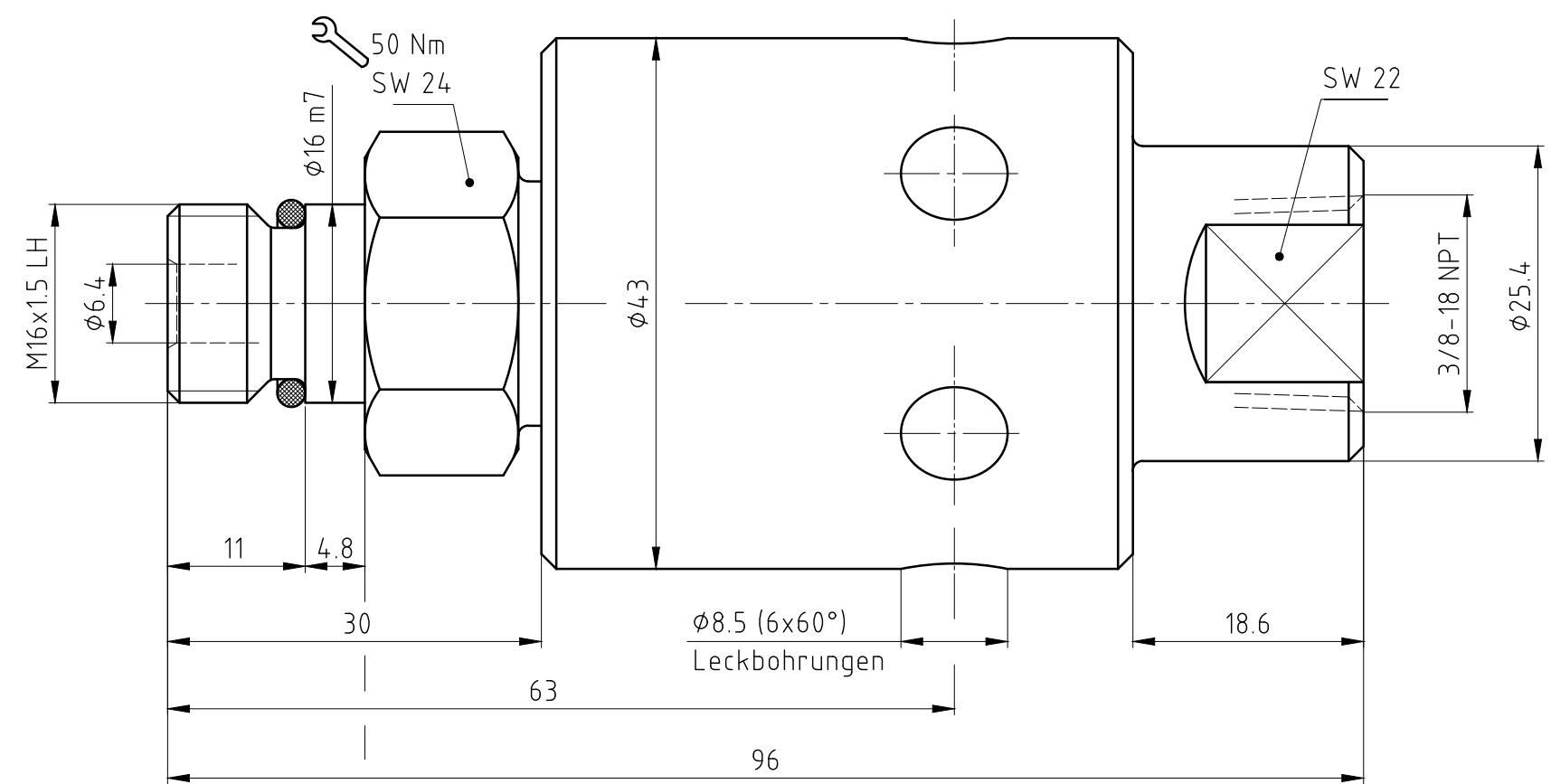
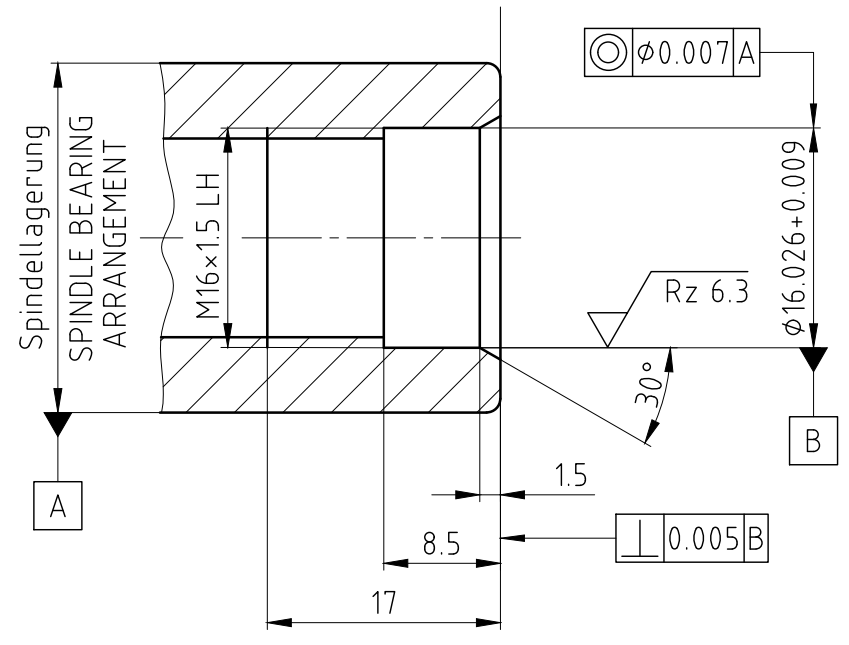


CONFIDENTIAL
 The reproduction, distribution and utilization of this document as well as the communication of its contents to others without express authorization is prohibited. Offenders will be held liable for the payment of damages. All rights reserved in the event of the grant of a patent, utility model or design.

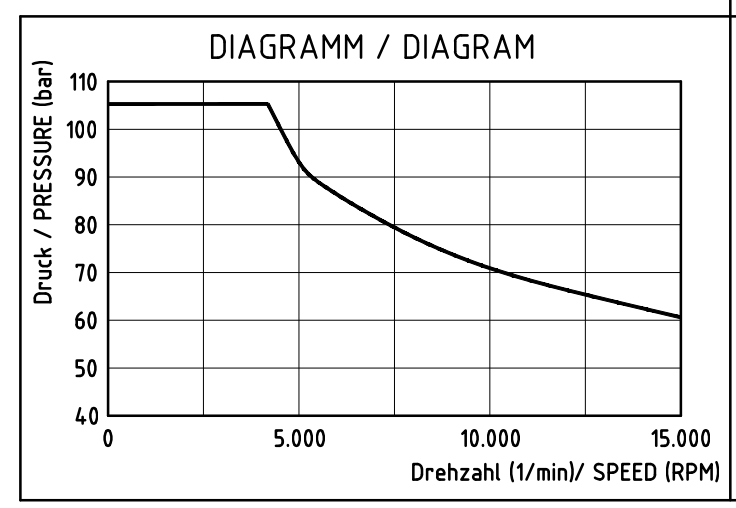
φ16	m7	+0.025 -0.007	16.025 16.007
Maß	Passung		



Spindelende des Kunden
 CUSTOMER'S SPINDLE END



Max. Druck und max. Drehzahl gleichzeitig sind zu vermeiden. Zuordnung siehe Diagramm.
 OPERATION AT MAXIMUM PRESSURE COMBINED WITH MAXIMUM SPEED SHOULD BE AVOIDED. IF THE OPERATING CONDITIONS ARE CLOSE TO THESE LIMITS, LOOK ON THE DIAGRAM.



OPERATING DATA / Betriebsdaten		
MEDIA/Medium	COOLANT	KSS
p max.	1500 PSI	105 bar
n max.	15000 RPM	15000 1/min
t max.	160 °F	70 °C
Q max.	4 GPM	15 l/min
FILTRATION/Filterung	60 µm	60 µm

PROJECTION:

SCALE: 2:1 Z:\UNIONS\

MATERIAL: INTERFACE CONTROL DRAWING					
TITLE: DEUBLIN ROTATING UNION DEUBLIN Drehdurchführung					
NO. 1101-235-259			SHEET A3		
ISSUE	MODIFICATION	ECO	DATE	SIGN	UNLESS SPECIFICALLY TOLERANCED, ALL DIMENSIONS ARE CONSIDERED REFERENCE