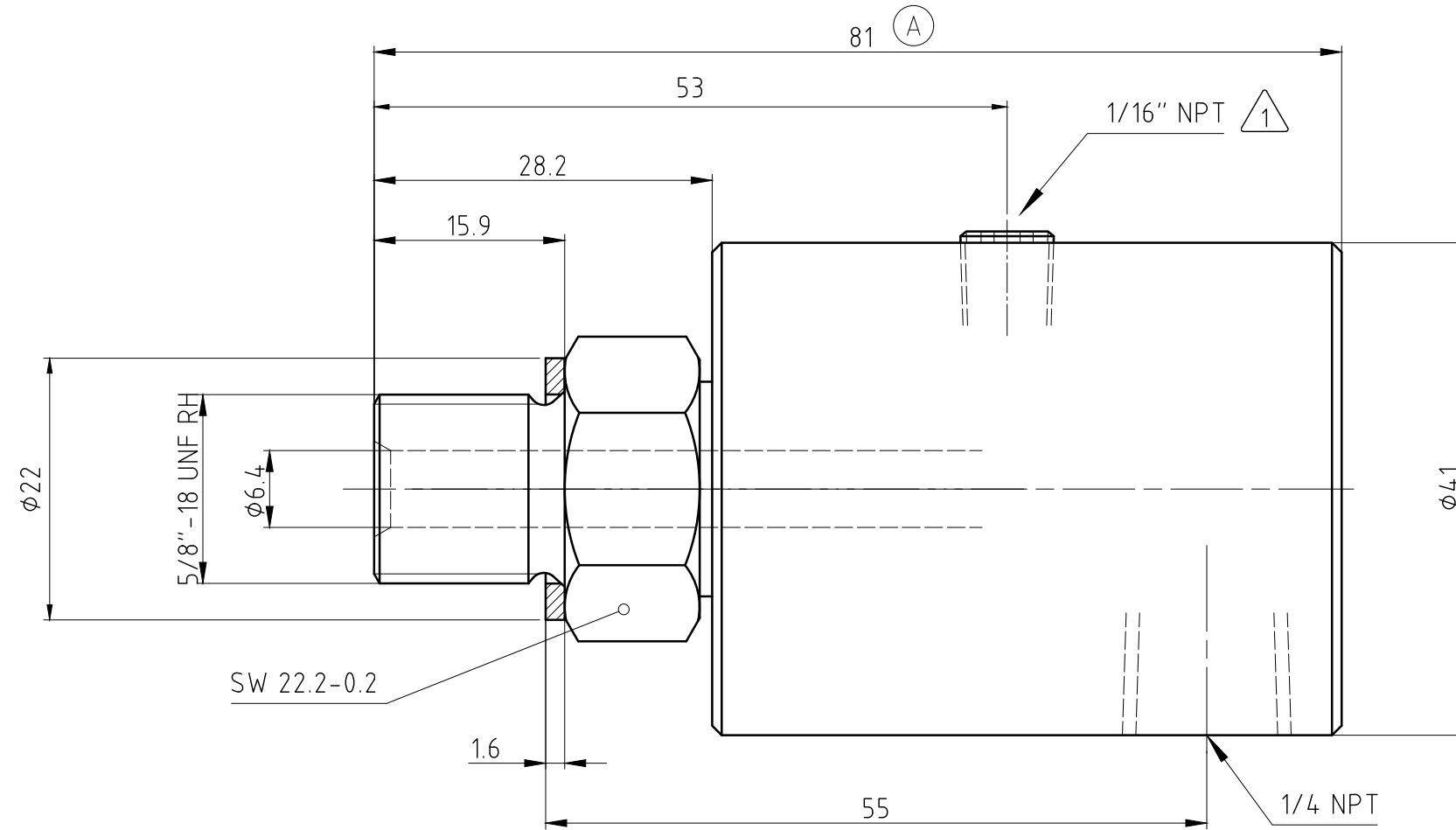


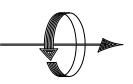
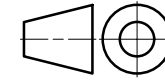
NOTES:

① CUSTOMER TO PERFORM AIR TEST USING 1/16" NPT HOLE PER INSTRUCTION 040-100.

CONFIDENTIAL
 THIS DOCUMENT CONTAINS CONFIDENTIAL AND PROPRIETARY INFORMATION OF DEUBLIN COMPANY. COPYING, USE, TRANSMISSION, DISTRIBUTION AND DISCLOSURE ARE SUBJECT TO THE TERMS AND CONDITIONS CONTAINED IN YOUR AGREEMENT WITH DEUBLIN COMPANY. ALL RIGHTS RESERVED.



OPERATING DATA:
 AIR-VACUUM-HYDRAULIC SERVICE
 150 P.S.I. (10bar) MAX.AIR SERVICE
 28" Hg (6,7 KPa) MAX.VACUUM SERVICE
 500 P.S.I. (33,3bar) MAX.HYDRAULIC SERVICE
 1000 R.P.M. (1000/MIN) MAX.SPEED
 250°F (121°C) MAX.TEMPERATURE

 DEUBLIN COMPANY WAUKEGAN, ILLINOIS, U.S.A.		PROJECTION: 	SCALE: 2:1 MATERIAL:				
		DATE: 10/29/2008 NAME: galindolm	TITLE: INTERFACE CONTROL DRAWING DEUBLIN AIR-VACUUM-HYD. UNION				
		DRN. 10/29/2008 ENGR. galindolm APPD.	NO. 1102-208-210 SHEET A3				
A	WAS 77	028947	06/14	RM	UNLESS SPECIFICALLY TOLERANCED, ALL DIMENSIONS ARE CONSIDERED REFERENCE		
ISSUE	MODIFICATION	ECO	DATE	SIGN			