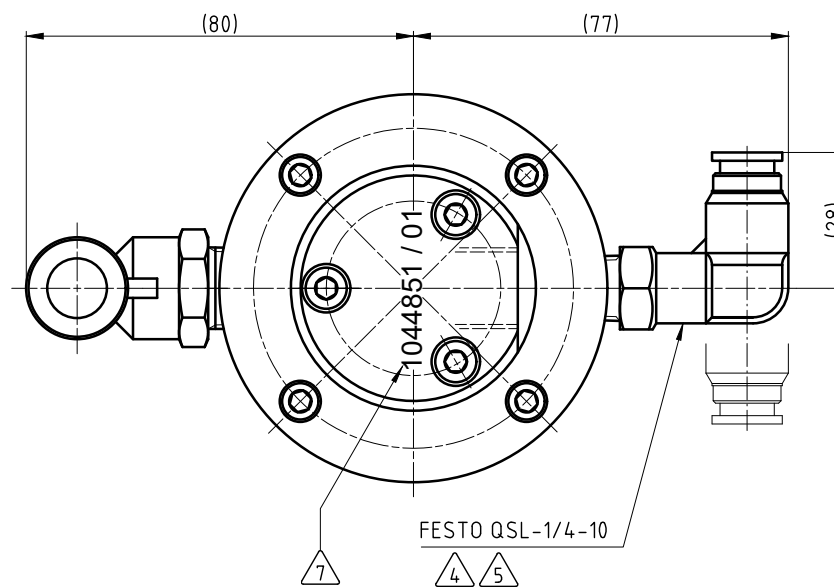
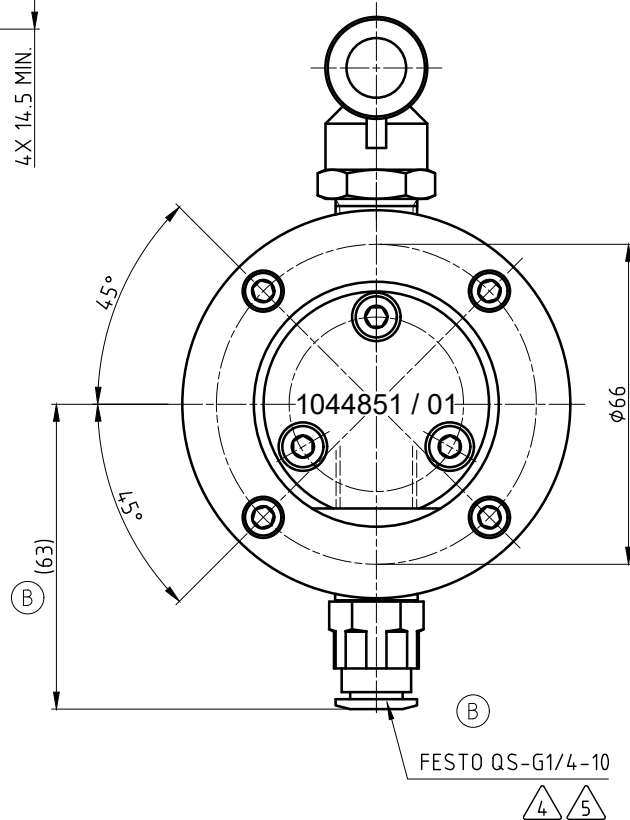
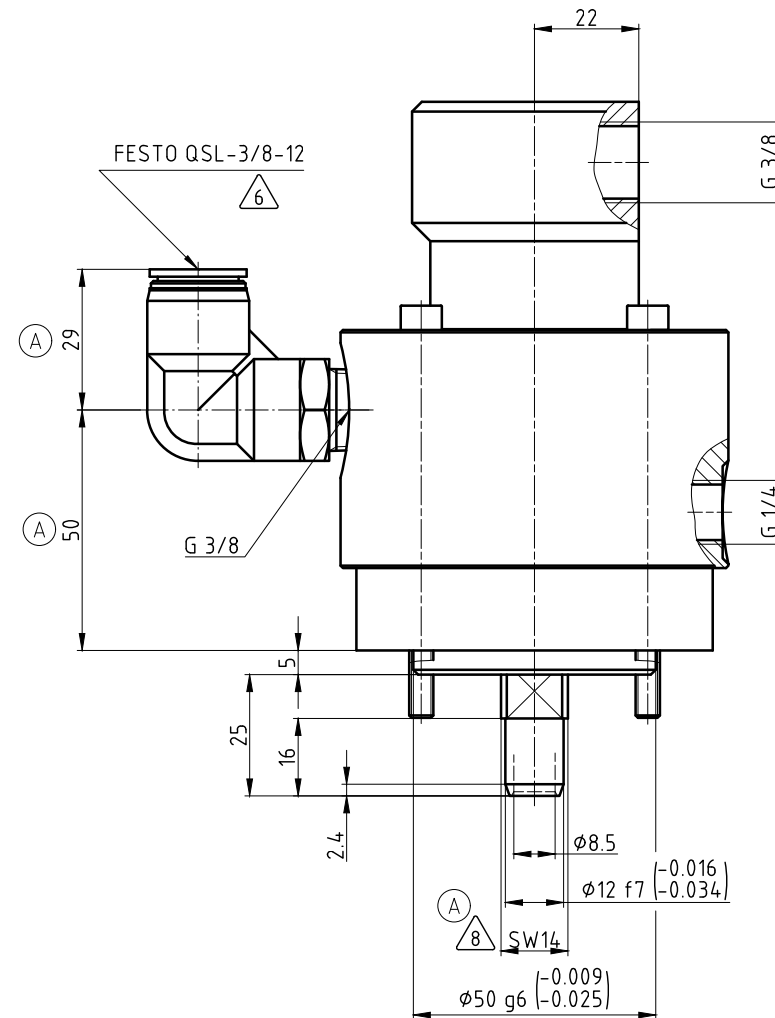
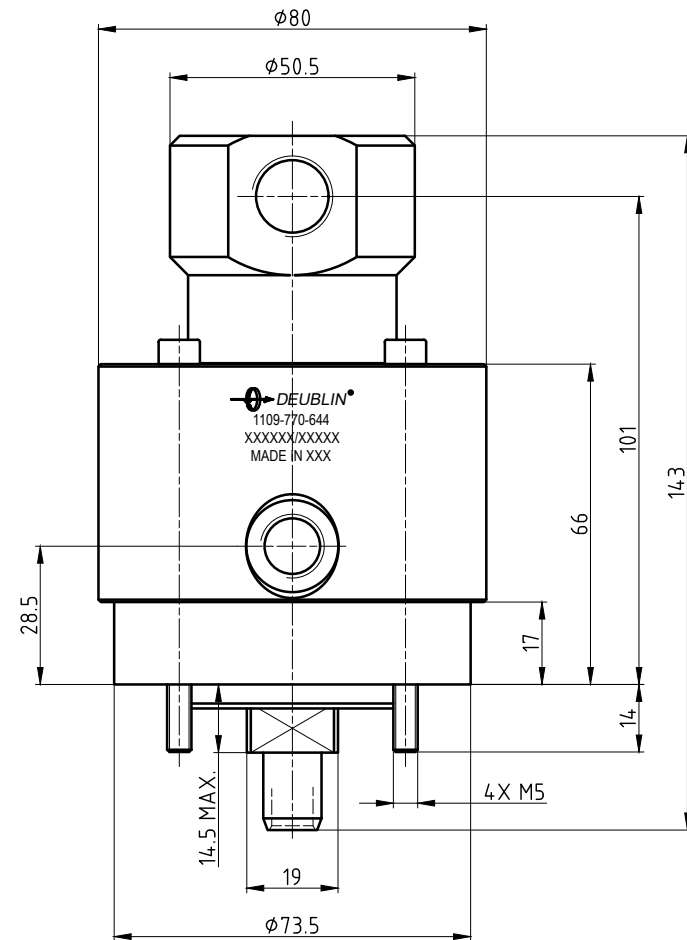
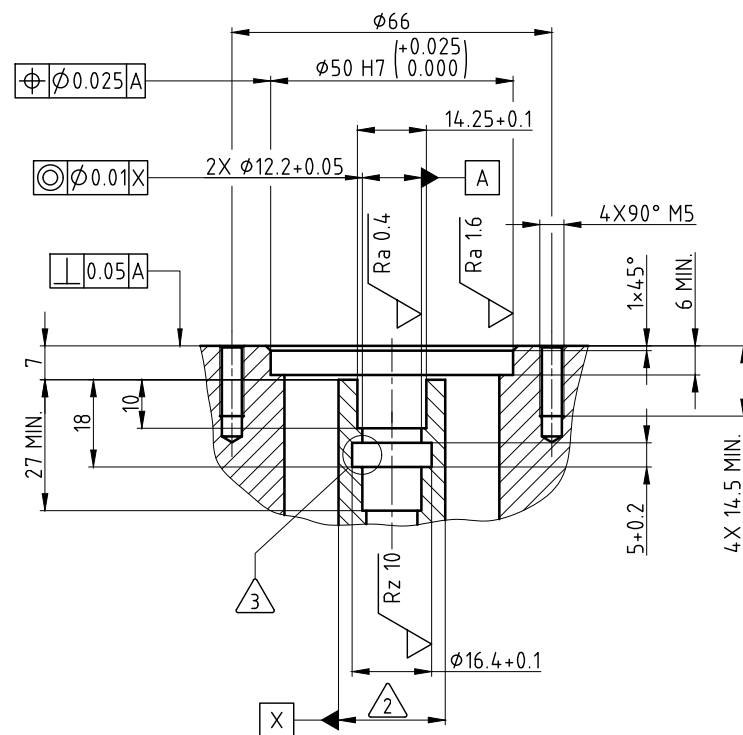


CONFIDENTIAL  
 THIS DOCUMENT CONTAINS CONFIDENTIAL AND PROPRIETARY INFORMATION OF DEUBLIN COMPANY. COPYING, USE, TRANSMISSION, DISTRIBUTION, AND DISCLOSURE ARE SUBJECT TO THE TERMS AND CONDITIONS CONTAINED IN YOUR AGREEMENT WITH DEUBLIN COMPANY. ALL RIGHTS RESERVED.

NOTES:

- 1 - CONTACT DEUBLIN OR VISIT WWW.DEUBLIN.COM FOR INSTRUCTION MANUAL: 040-553.
- 2 - SPINDLE BEARING ARRANGEMENT
- 3 - GROOVE SUITABLE FOR 12.37x2.62 O-RING (-112) & BACKUP RING (SUPPLIED BY CUSTOMER).
- 4 - DRAIN CONNECTION
- 5 - STRAIGHT THRU FITTING & ELBOW FITTING FOR OPTIONAL APPLICATION (SUPPLIED BY DEUBLIN).
- 6 - VENT CONNECTION
- 7 - MARKING WITH CHIRON PART NO.
- 8 - ACROSS FLATS.

CUSTOMER INTERFACE



OPERATING DATA				
MEDIA		COOLANT	MQL	CUTTING OIL (max. 15mm <sup>2</sup> /s)
MEDIA PRESSURE	MAXIMUM	140 bar	10 bar	150 bar
	MINIMUM	1 bar	1 bar	1 bar
FLOW RATE	MAXIMUM	82 l/min	3810 NI/min	82 l/min
	MINIMUM	6 l/min	360 NI/min	0,5 l/min
TEMPERATURE	MAXIMUM	70 °C	70 °C	70 °C
	MINIMUM	5 °C	5 °C	5 °C
MAXIMUM SPEED		20000 min <sup>-1</sup>	20000 min <sup>-1</sup>	15000 min <sup>-1</sup>
DRY RUN	UNPRESSURIZED ONLY			
RECOMMENDED FILTRATION	ISO 4406 CLASS 17/15/12			

		PROJECTION:	SCALE: 1:1				
			MATERIAL: INTERFACE CONTROL DRAWING				
		DATE: 24.03.2014	TITLE: DEUBLIN ROTATING UNION				
		ENGR: 24.03.2014	DEUBLIN Drehdurchführung				
		APPD.	NO. 1109-770-644				
C	CUTTING OIL ADDED	04/5717	01/18	EG	APPD.		
B	REV'D FITTING WAS ADDED	04/4922	12/17	LG			
A	NOTE 08.29.50 ADDED	028538	05/14	CW			
ISSUE	MODIFICATION	ECO	DATE	SIGN			

SHEET A2