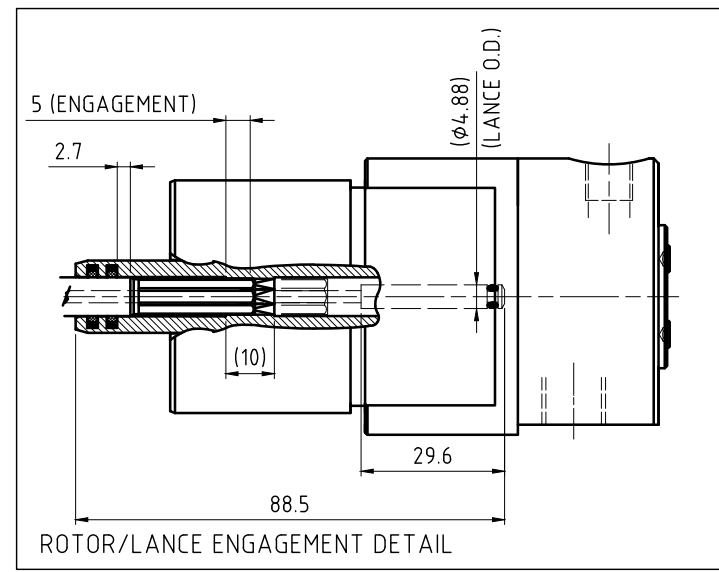
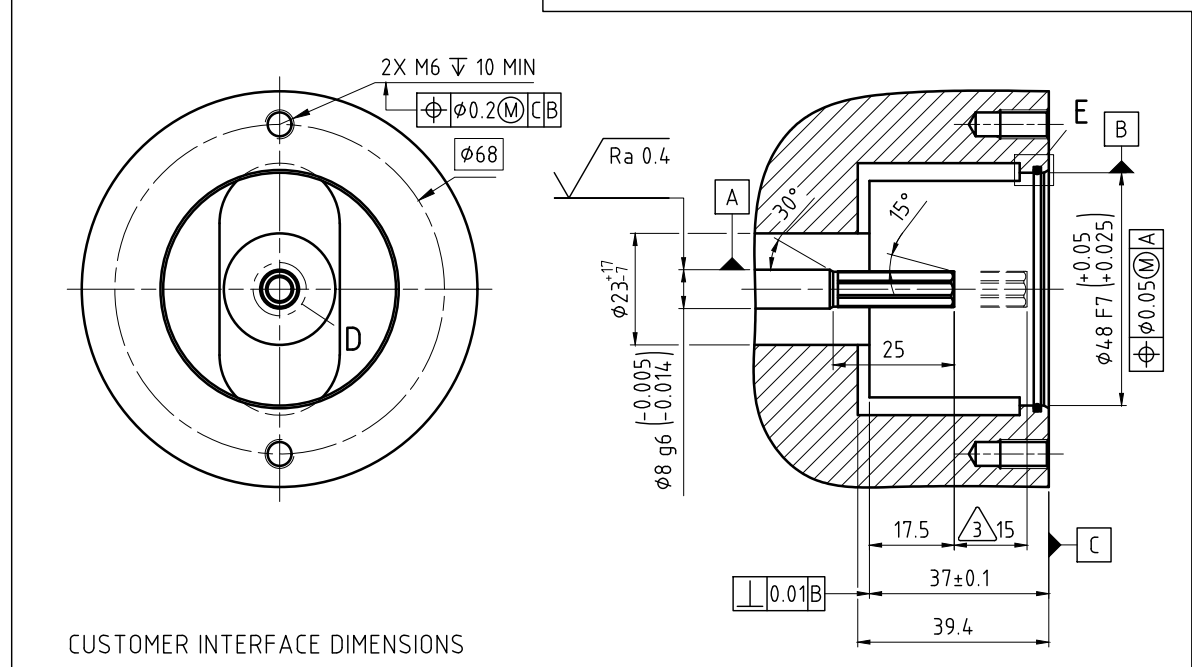
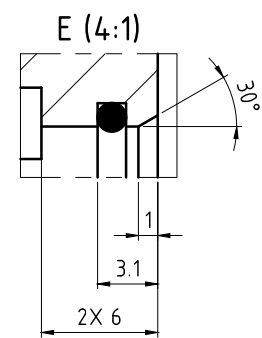
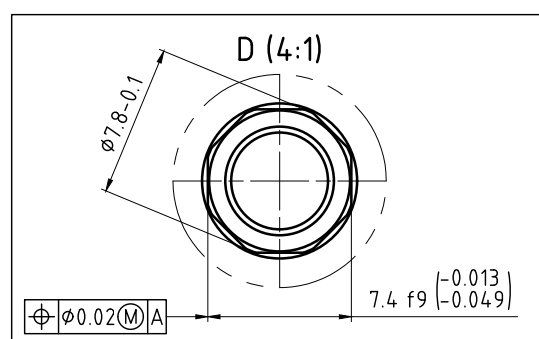
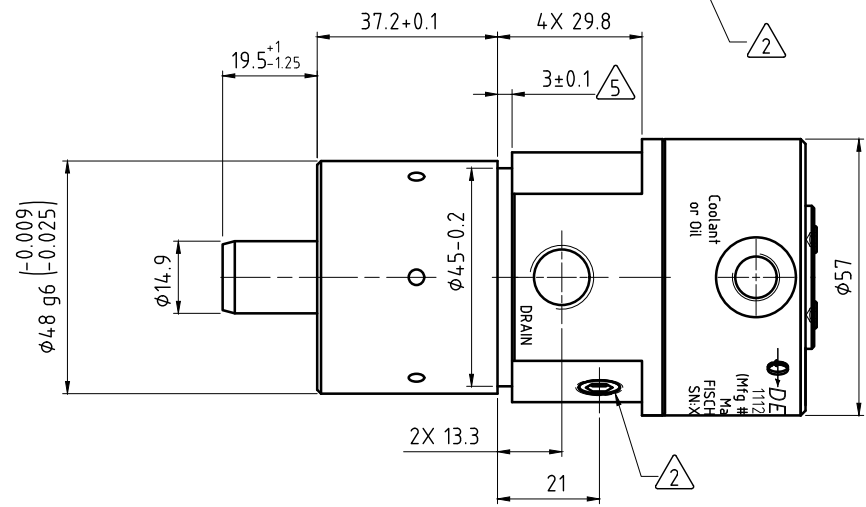
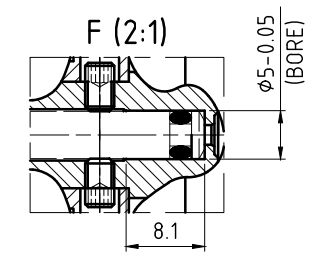
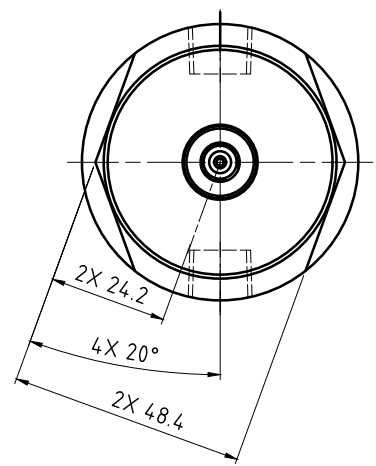
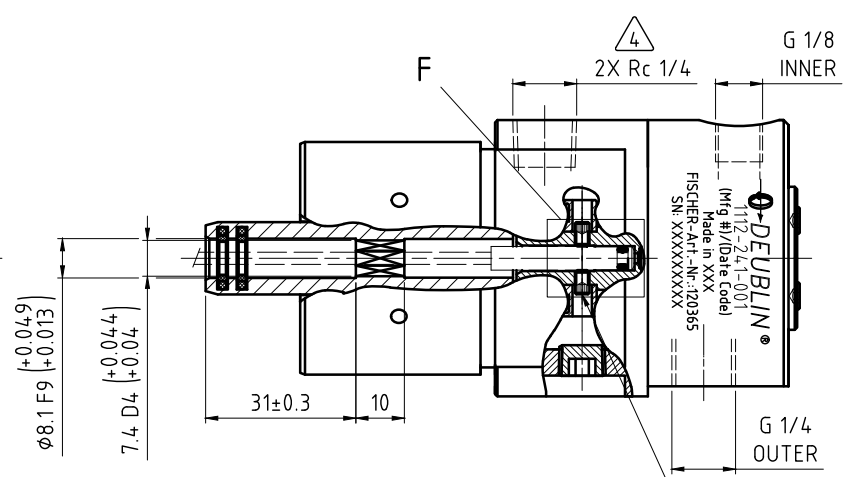
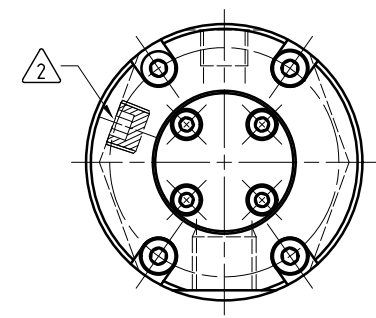


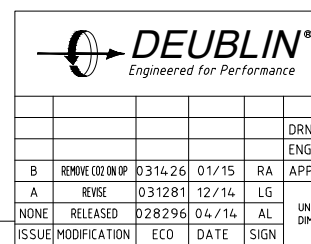
NOTES:

- 1 - INNER PASSAGE PRESSURE MUST BE GREATER THAN OR EQUAL TO OUTER PASSAGE PRESSURE DURING OPERATION.
- 2 - M3 SET SCREW IS USED TO RETAIN CUSTOMER-SUPPLIED LANCE. ACCESS THROUGH Rc 1/8 PLUG ON FLAT.
- 3 - DRAWBAR MOVEMENT DISTANCE.
- 4 - DRAIN PORTS.
- 5 - MOUNTING GROOVE.
- 6 - SEE OPERATING DATA CHART FOR PASSAGE MEDIA.



(B) OPERATING DATA

PASSAGE MEDIA	INNER COOLANT/OIL	OUTER AIR
MEDIA PRESSURE	MAXIMUM 140 bar MINIMUM -	10 bar
FLOW RATE	MAXIMUM 6 L/min MINIMUM -	1080 NL/min
TEMPERATURE	MAXIMUM 70 °C MINIMUM 5 °C	70 °C 5 °C
MAXIMUM SPEED	30000 min ⁻¹	
AXIAL FORCE	5.02 N/bar	
DRY RUN	LIMITED	UNLIMITED
RECOMMENDED FILTRATION	ISO 4406 CLASS 17/15/12	



PROJECTION:	SCALE: 1:1
MATERIAL:	INTERFACE CONTROL DRAWING
TITLE:	DEUBLIN 2-PASSAGE UNION, AIR/COOLANT/OIL
NO.:	1112-241-001
SHEET:	A2

REVISE	DATE	NAME	DATE	NAME
B REMOVE COG ON DR	0314/26	01/15	RA	APPD.
A	0312/81	12/14	LG	
NONE	RELEASED	0282/96	04/14	AL
ISSUE	MODIFICATION	ECO	DATE	SIGN

UNLESS SPECIFICALLY TOLERANCED, ALL DIMENSIONS ARE CONSIDERED REFERENCE