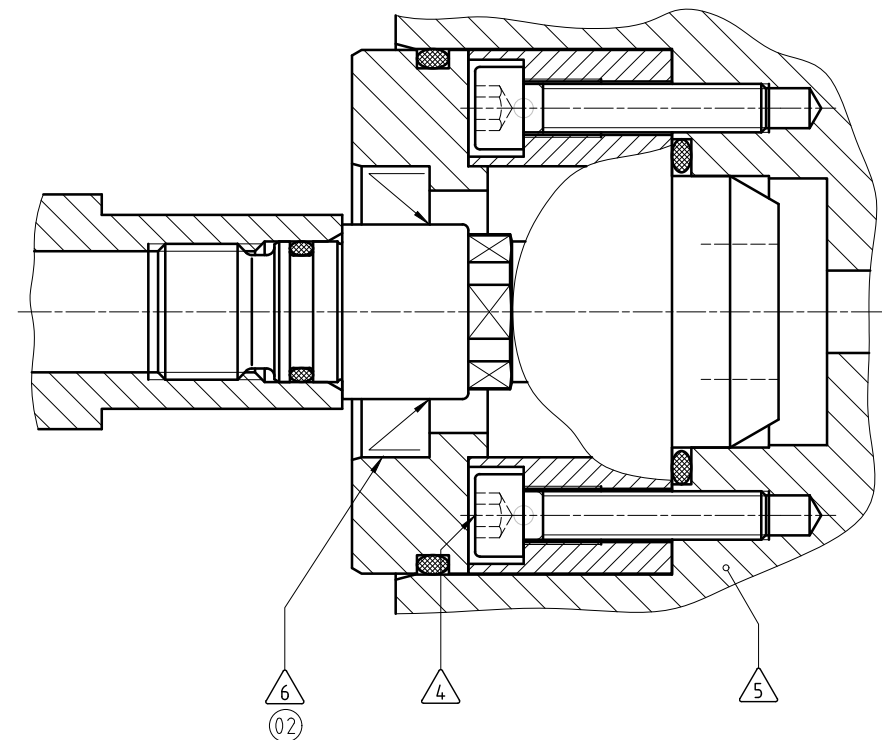


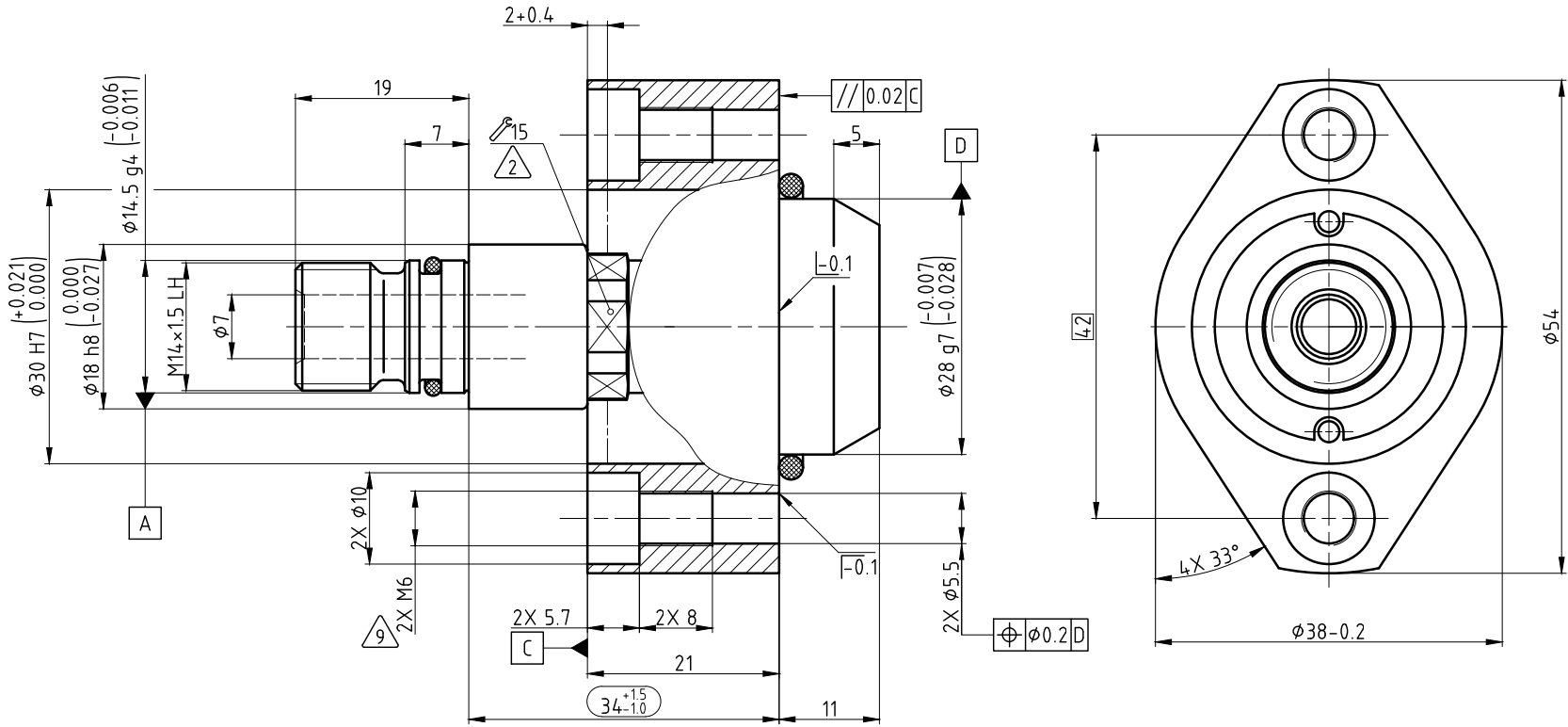
CONFIDENTIAL
 THIS DOCUMENT CONTAINS CONFIDENTIAL AND PROPRIETARY INFORMATION OF DEUBLIN COMPANY. COPYING, USE, TRANSMISSION, DISTRIBUTION, AND DISCLOSURE ARE SUBJECT TO THE TERMS AND CONDITIONS CONTAINED IN YOUR AGREEMENT WITH DEUBLIN COMPANY. ALL RIGHTS RESERVED.

BEARINGLESS UNION, INSTALLED

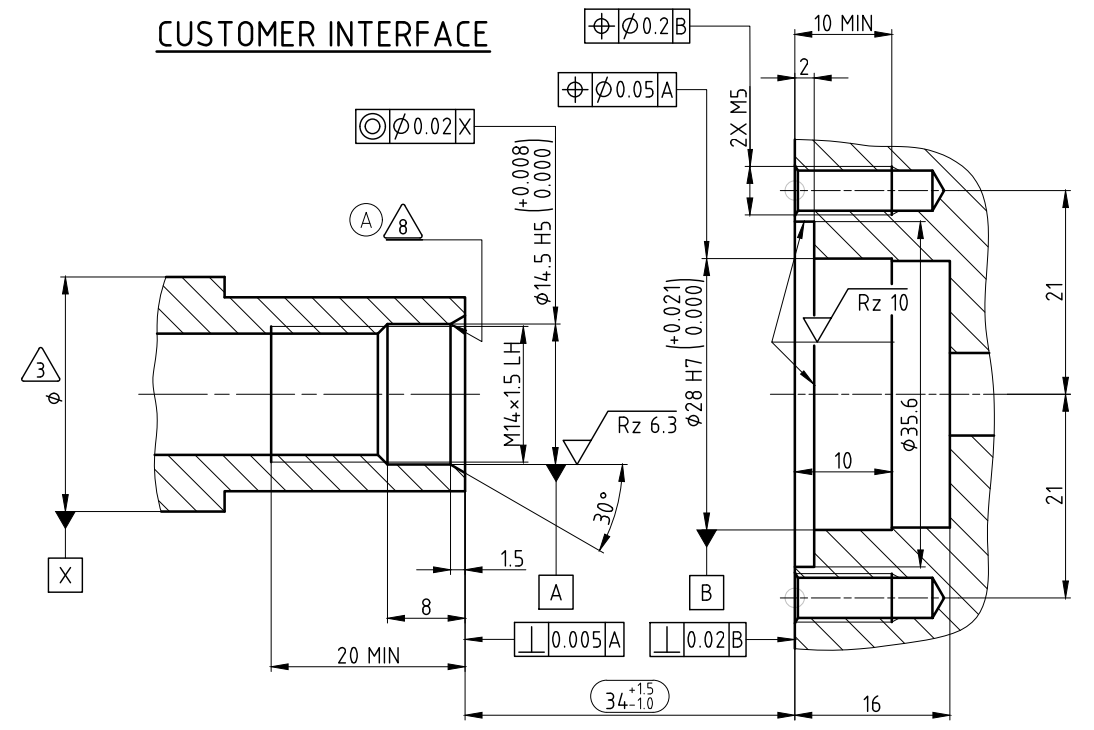


NOTES:

- 1 - CONTACT DEUBLIN OR VISIT WWW.DEUBLIN.COM FOR INSTRUCTION MANUAL: 040-553.
- 2 - TORQUE TO 16 Nm.
- 3 - SPINDLE BEARING ARRANGEMENT.
- 4 - 2X SCREW DIN912-M5x25, MIN. PROPERTY CLASS 8.8, SUPPLIED BY CUSTOMER; TORQUE TO 6.2 Nm.
- 5 - MACHINE HOUSING MATERIAL: STEEL, MIN. TENSILE STRENGTH 500 N/mm².
- 6 - ROTARY SHAFT SEAL SUPPLIED BY CUSTOMER. ATTEND MANUFACTURER'S SPECIFICATION REGARDING MAXIMUM PERIPHERAL VELOCITY!
- 7 - OBSERVE THE AXIAL FORCE RESULTING FROM THE ACTIVE PRESSURE LOADED AREA AND THE MEDIA SUPPLY PRESSURE!
- 8 - EDGE ROUNDED.
- 9 - DISASSEMBLY THREADS.



CUSTOMER INTERFACE



OPERATING DATA (01)			
MEDIA	COOLANT (OIL IN WATER)	MQL	Cutting Oil VG16 (max. 15mm ² /s)
MEDIA PRESSURE	MAXIMUM (02) 105 bar MINIMUM 1 bar	10 bar 3 bar	(02) 105 bar 1 bar
FLOW RATE	MAXIMUM 50 L/min MINIMUM 6 L/min	(02) 1539 NL/min NL/min	50 L/min 0.5 L/min
TEMPERATURE	MAXIMUM 70 °C MINIMUM 5 °C	70 °C 5 °C	70 °C 5 °C
MAXIMUM SPEED	30000 min ⁻¹	30000 min ⁻¹	25000 min ⁻¹
AXIAL FORCE	9.5 N/bar		
DRY RUN	UNPRESSURIZED ONLY		
RECOMMENDED FILTRATION	ISO 4406 CLASS 17/15/12		

	PROJECTION:	SCALE: 2:1	TITLE: DEUBLIN BEARINGLESS UNION DEUBLIN Dichtungssatz										
		MATERIAL: INTERFACE CONTROL DRAWING											
<table border="1"> <tr> <th>DATE</th> <th>NAME</th> </tr> <tr> <td>DRN. 20.12.2016</td> <td>FD</td> </tr> <tr> <td>ENGR. 20.12.2016</td> <td>CW</td> </tr> </table>		DATE	NAME	DRN. 20.12.2016	FD	ENGR. 20.12.2016	CW	NO. 1121-269-851					
DATE	NAME												
DRN. 20.12.2016	FD												
ENGR. 20.12.2016	CW												
<table border="1"> <tr> <th>DATE</th> <th>NAME</th> </tr> <tr> <td>04.3961 09/17</td> <td>CW</td> </tr> <tr> <td>04.3715 08/17</td> <td>CW</td> </tr> <tr> <td>04.3547 08/17</td> <td>CB</td> </tr> <tr> <td>04.2090 25.04.17</td> <td>FD</td> </tr> </table>		DATE	NAME	04.3961 09/17	CW	04.3715 08/17	CW	04.3547 08/17	CB	04.2090 25.04.17	FD	SHEET A2	
DATE	NAME												
04.3961 09/17	CW												
04.3715 08/17	CW												
04.3547 08/17	CB												
04.2090 25.04.17	FD												
UNLESS SPECIFICALLY TOLERANCED, ALL DIMENSIONS ARE CONSIDERED REFERENCE													