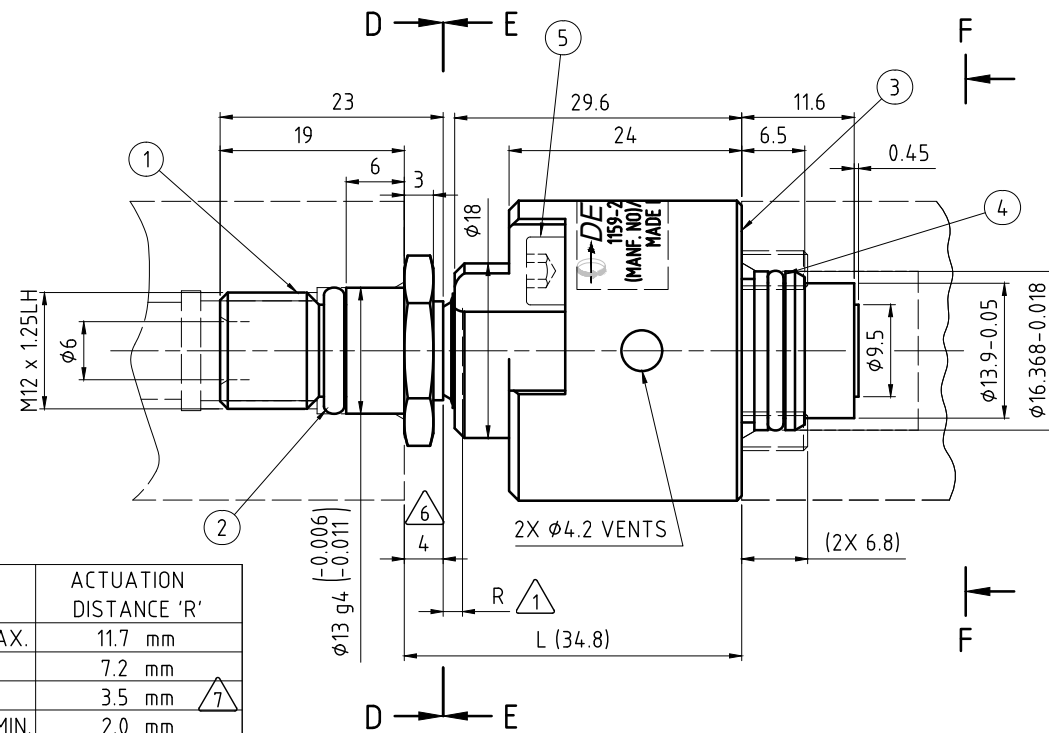
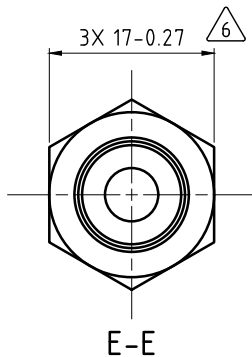
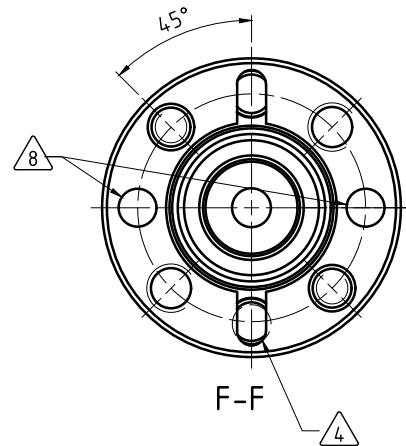
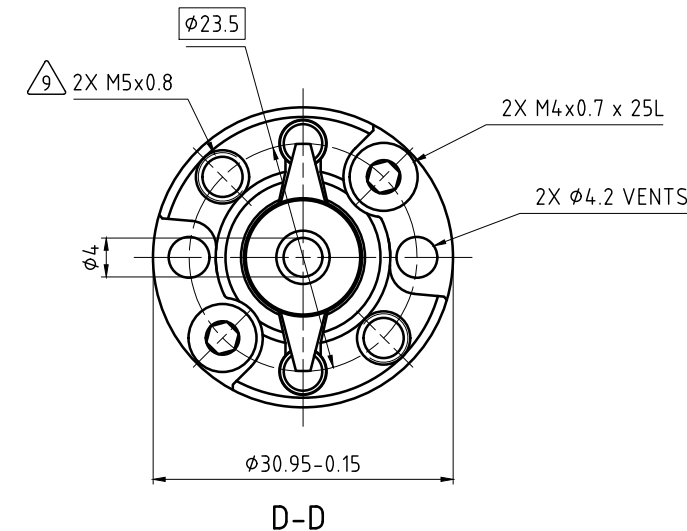


NOTES:

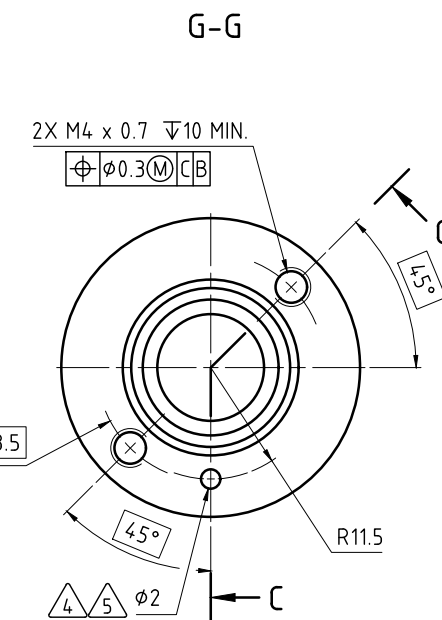
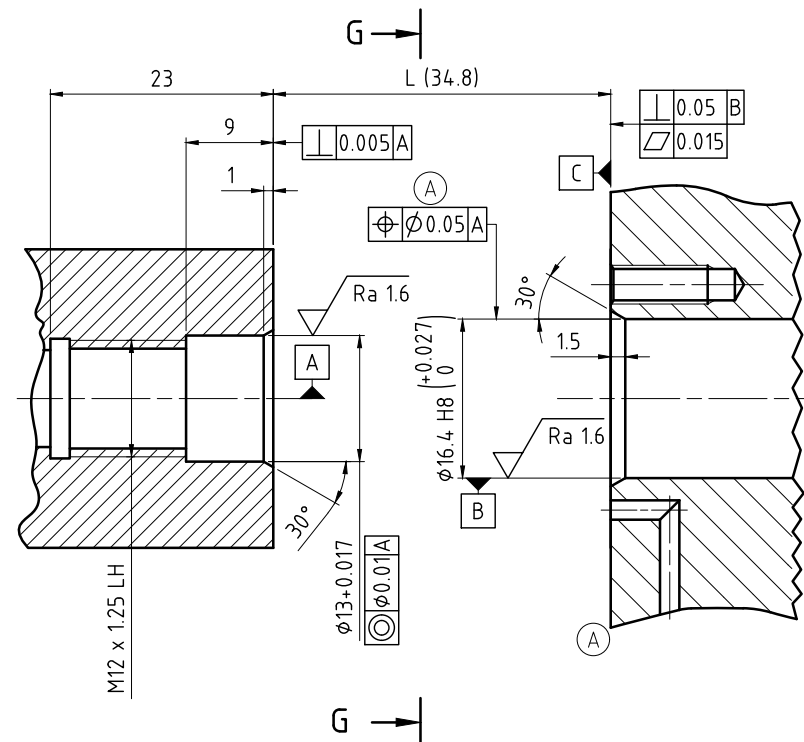
- ① - FLOATING SEAL ASSEMBLY ACTUATION DISTANCE.
- ② - AIR FUNCTIONS IN A CONTROLLED LEAKAGE CONDITION.
- ③ - N/A
- ④ - UNION ACTUATION PORT MUST BE ALIGNED CORRECTLY WITH MACHINE ACTUATION PORT.
- ⑤ - AIR ACTUATION PORT PRESSURIZATION DURING ROTATION WITH DRY AIR THROUGH THE MEDIA CHANNEL CAUSES PREMATURE WEAR OF THE SEAL.
- ⑥ - ROTOR TO BE INSTALLED USING A SOCKET WRENCH OR BOX END WRENCH ONLY. WHEN USING SOCKET WRENCH CARE MUST BE TAKEN TO NOT CONTACT SEAL FACE. TORQUE ROTOR TO 15 N-m + 2 N-m.
- ⑦ - DO NOT FLOW ANY MEDIA AT ACTUATION DISTANCE POSITION "R" LESS THAN 3.5mm.
- ⑧ - HOLES HAVE NO FUNCTION IN THIS DESIGN.
- ⑨ - M5 HOLES TO BE USED FOR JACKING SCREWS/UNION REMOVAL ONLY.
- 10 - THIS MODEL IS THE SHRINK FIT SEAL VERSION OF 1159-021-114.



MOUNTING DIMENSION 'L'	ACTUATION DISTANCE 'R'
44.5 mm MAX.	11.7 mm
4.0 mm	7.2 mm
36.3 mm	3.5 mm ⑦
34.8 mm MIN.	2.0 mm



OPERATING DATA ⑤				
MEDIA	COOLANT	AIR OR MQL	Actuating port	
MEDIA PRESSURE	MAXIMUM	14 MPa	1 MPa	0.6 MPa
	MINIMUM	0.15 MPa	0.3 MPa	0.2 MPa
FLOW RATE	MAXIMUM	33 L/min	1580 NL/min	80 NL/min
	MINIMUM	10 L/min	480 NL/min	10 NL/min
TEMPERATURE	MAXIMUM	70 °C	70 °C	70 °C
	MINIMUM	5 °C	5 °C	5 °C
MAXIMUM SPEED	50000 min <sup>-1</sup>			
AXIAL FORCE	5.1 N/bar (357 N/7 MPa)			
DRY RUN	UNLIMITED	UNLIMITED	NOT POSSIBLE	
RECOMMENDED FILTRATION	ISO 4406 CLASS 17/15/12		ISO8573-1 CLASS4	



		PROJECTION:	SCALE: 2:1
			MATERIAL: INTERFACE CONTROL DRAWING
		DATE: 10/06/16	TITLE: DEUBLIN BEARINGLESS UNION, M12x1.25 LH
		NAME: L. Galindo	
		ENGR. 10/06/16	
		APPD. M. Clifford	
B	SEECO	053707	10/19
A	SEECO	051758	04/19
NONE	INITIAL RELEASE	042818	06/17
ISSUE	MODIFICATION	ECO	DATE
			SIGN
UNLESS SPECIFICALLY TOLERANCED, ALL DIMENSIONS ARE CONSIDERED REFERENCE			NO. 1159-221-214
			SHEET A2

Item	Part Name	Qty	Material
5	Hex Screw M4X25L	2	Alloy steel
4	O-ring	1	FKM
3	Housing	1	SUS, SIC
2	O-ring	1	FKM
1	Rotor	1	SUS, SIC

CUSTOMER INTERFACE

C-C