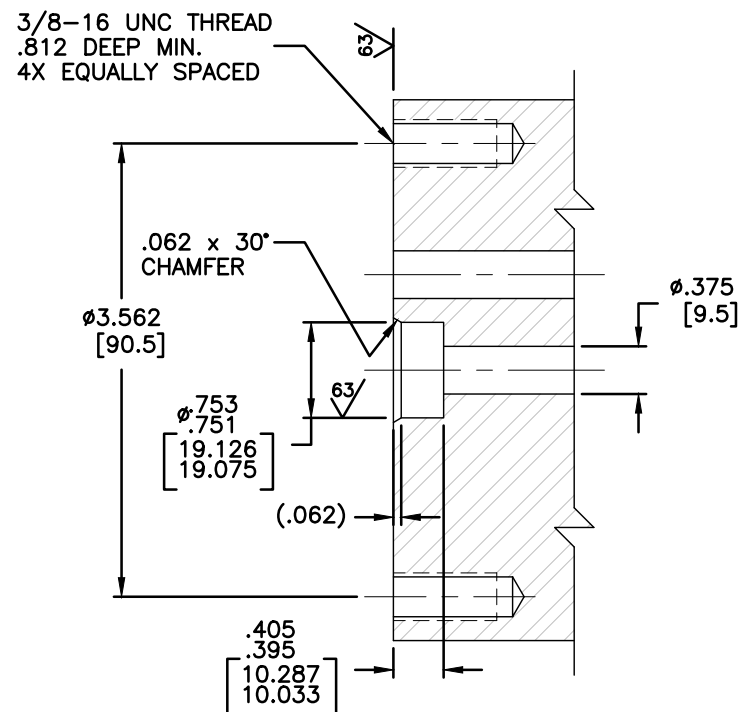
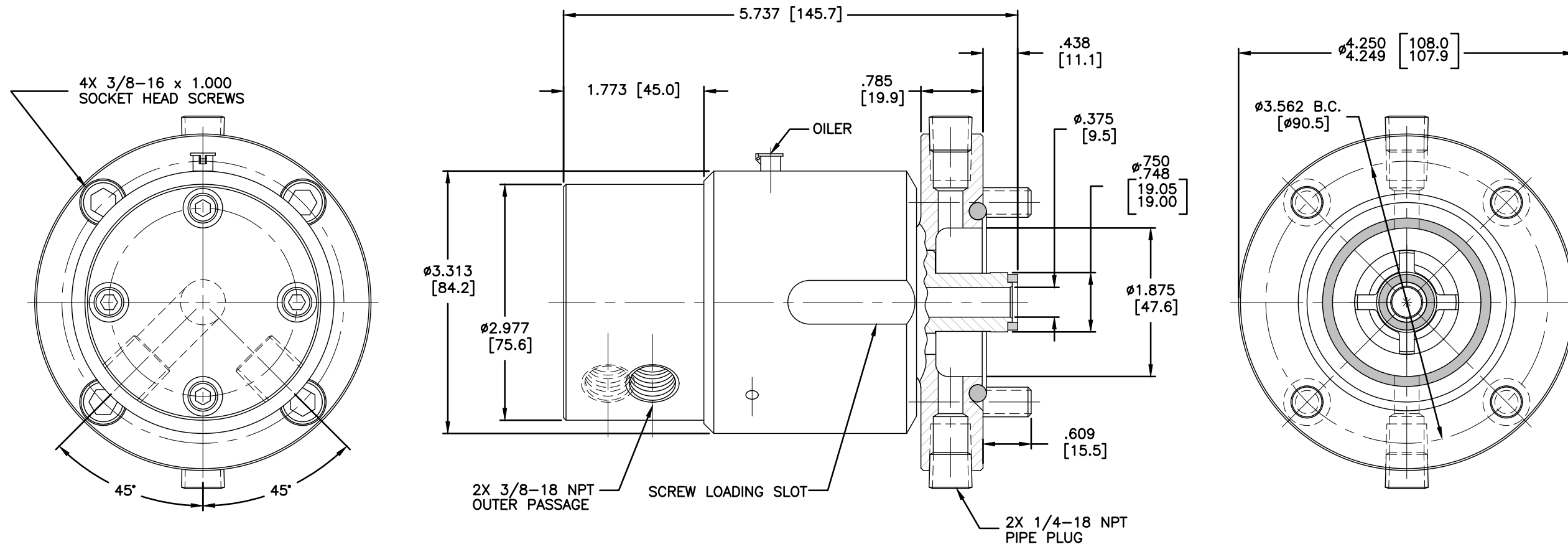


NOTES:

- 1 - WHEN ORDERING FROM DEUBLIN USE PART NUMBER: 1500-000.
- 2 - UNIONS SHOULD BE RETURNED TO FACTORY FOR SERVICING. SPECIAL TOOLS AND FIXTURES ARE REQUIRED MAKING SERVICING IN THE FIELD IMPRACTICAL.



CUSTOMER INTERFACE

OPERATING DATA		
MEDIA	AIR	
MAX AIR PRESSURE	150 PSI	10 bar
MAX VACUUM	28" Hg	6.7 kPa
MAX SPEED	1500 RPM	1500/min
MAX TEMPERATURE	250°F	121°C

CONFIDENTIAL
THIS DOCUMENT CONTAINS PROPRIETARY INFORMATION AND IS NOT TO BE TRANSMITTED, REPRODUCED, USED OR DISCLOSED TO ANYONE WITHOUT THE WRITTEN PERMISSION OF THE DEUBLIN COMPANY.

LET.	REVISION	ECO	DATE	SIGN

EQUIPMENT REF:

ASSY/TEST FIXTURES REQUIRED:

SCALE	FULL	DWG SIZE	C
DRN	RM	09/16/02	
ENGR	ARS	09/16/02	
APPD	ARS	09/16/02	

DEUBLIN COMPANY
WAUKEGAN, ILLINOIS, U.S.A.

TITLE: INTERFACE CONTROL
DRAWING FOR DEUBLIN
UNION 1500-000

NO. 1500-000-IC

C.A.D. DRAWING

UNLESS OTHERWISE SPECIFIED TOLERANCES ±.010. DIMENSIONS IN [] ARE IN MILLIMETERS.