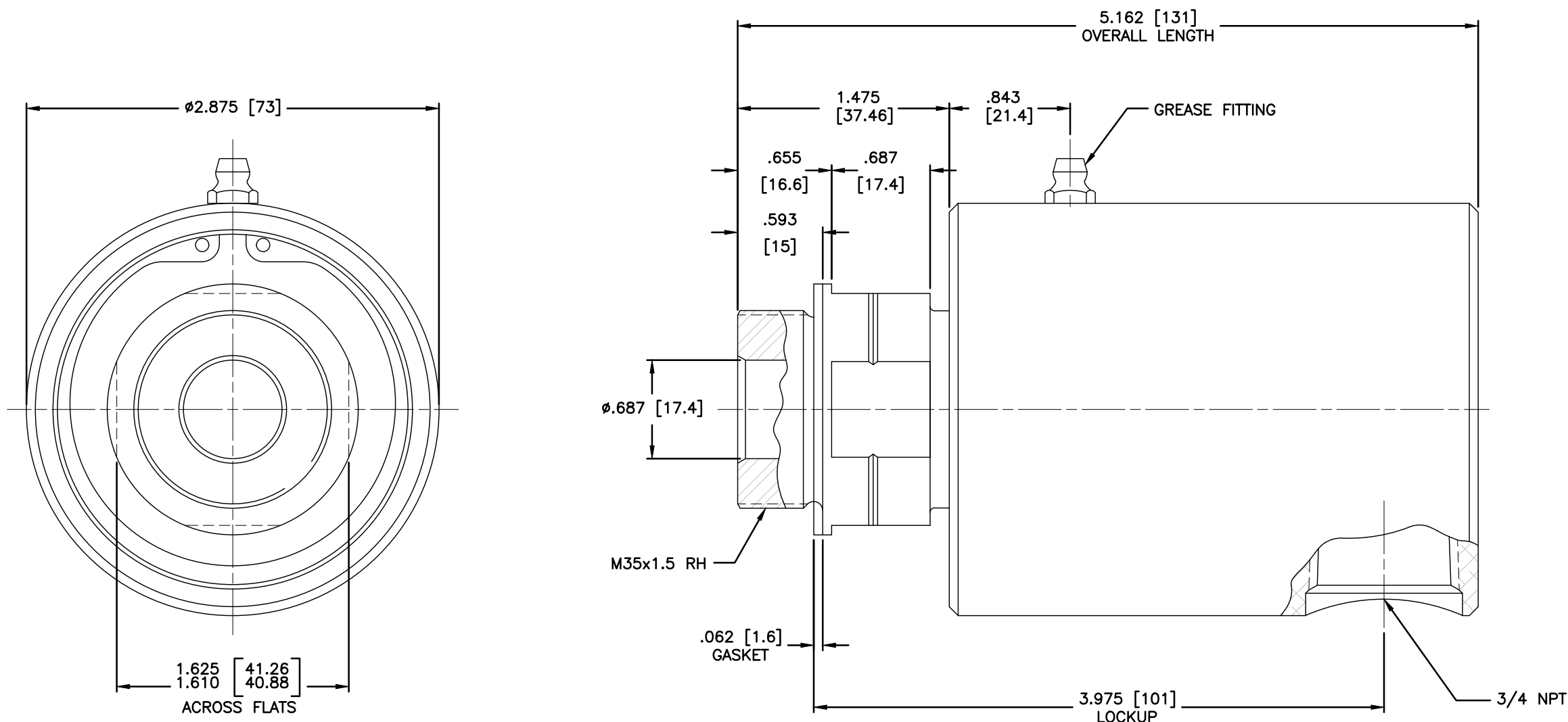


NOTES:

1 - WHEN ORDERING UNION FROM DEUBLIN COMPANY, USE PART NUMBER 250-094-014.



OPERATING DATA:
 AIR-VACUUM-HYDRAULIC SERVICE
 150 P.S.I. (10 bar) MAX.AIR SERVICE
 28" Hg (6,7 KPa) MAX.VACUUM SERVICE
 1000 P.S.I. (68,9bar) MAX.HYDRAULIC SERVICE
 3500 R.P.M. (3500/MIN) MAX.SPEED
 250°F. (121°C.) MAX.TEMPATURE

CONFIDENTIAL
 THIS DOCUMENT CONTAINS CONFIDENTIAL AND PROPRIETARY INFORMATION OF DEUBLIN COMPANY. COPYING, USE, TRANSMISSION, DISTRIBUTION, AND DISCLOSURE ARE SUBJECT TO THE TERMS AND CONDITIONS CONTAINED IN YOUR AGREEMENT WITH DEUBLIN COMPANY. ALL RIGHTS RESERVED.

				EQUIPMENT REF:		SCALE	1.66:1	DWG SIZE	C
						DRN	RM	11/04/03	
						ENGR	ARS	11/04/03	
						APPD	ARS	11/04/03	
				ASSY/TEST FIXTURES REQUIRED:		UNLESS SPECIFICALLY TOLERANCED, ALL DIMENSIONS ARE REFERENCE DIMENSIONS IN [] ARE IN MILLIMETERS.			
LET.	REVISION	ECO	DATE	SIGN					
						DEUBLIN COMPANY WAUKEGAN, ILLINOIS, U.S.A.		TITLE: INTERFACE CONTROL DRAWING FOR UNION 250-094-014	
						NO.		250-094-014-IC	