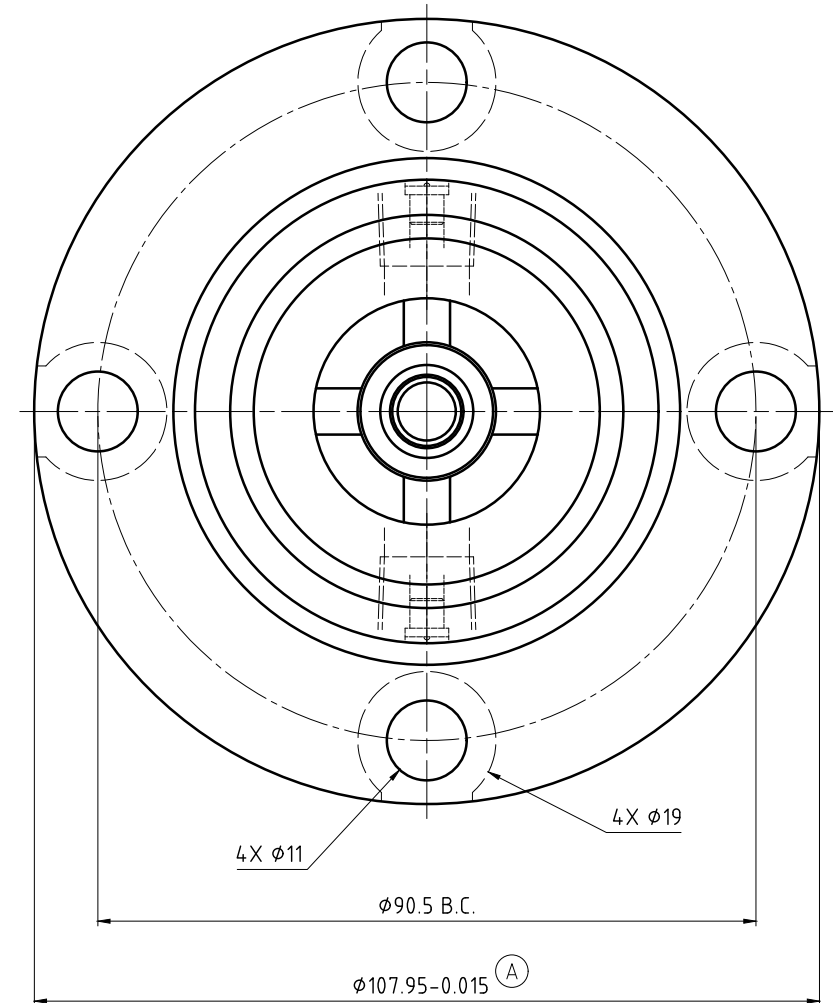
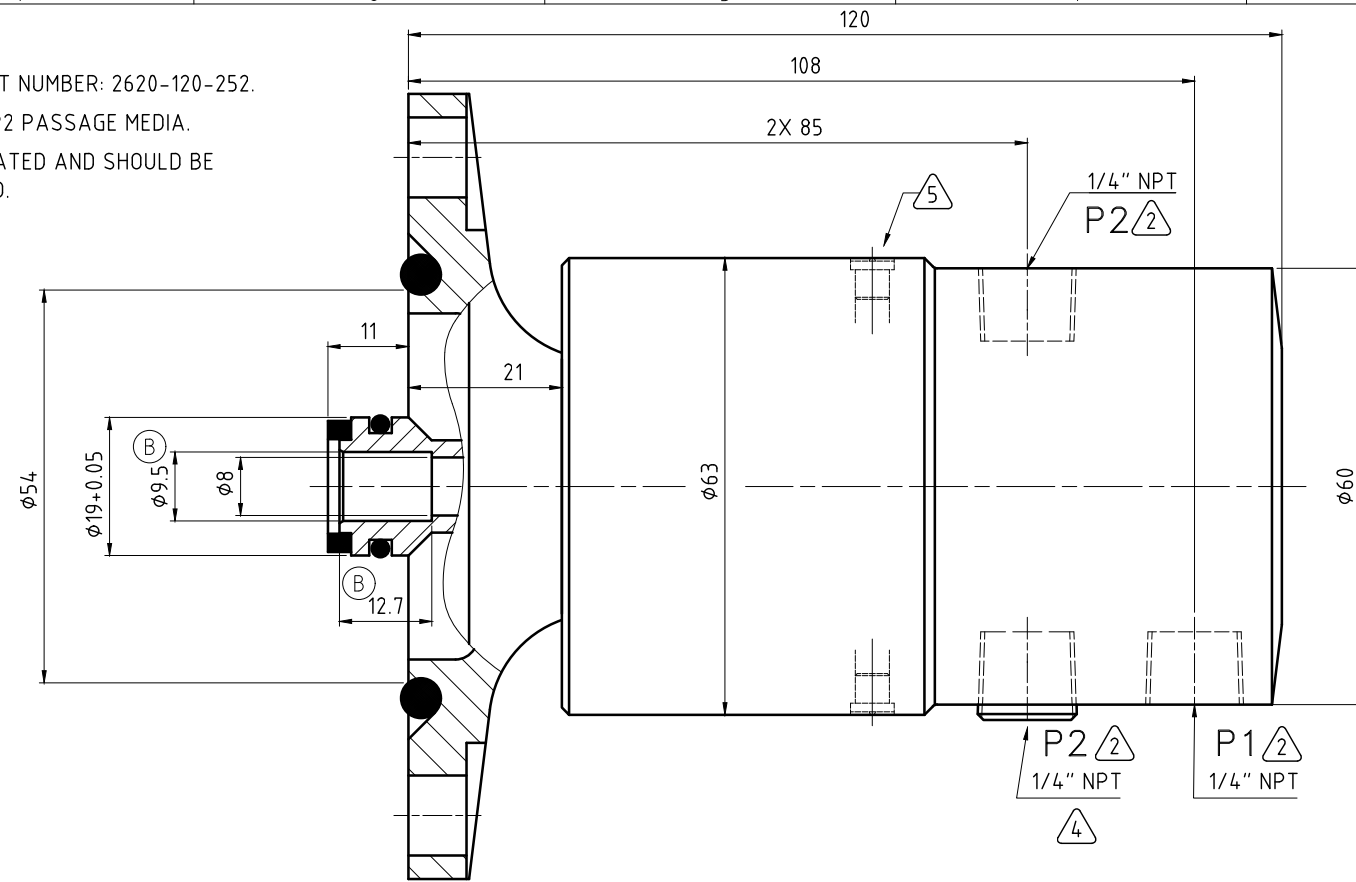


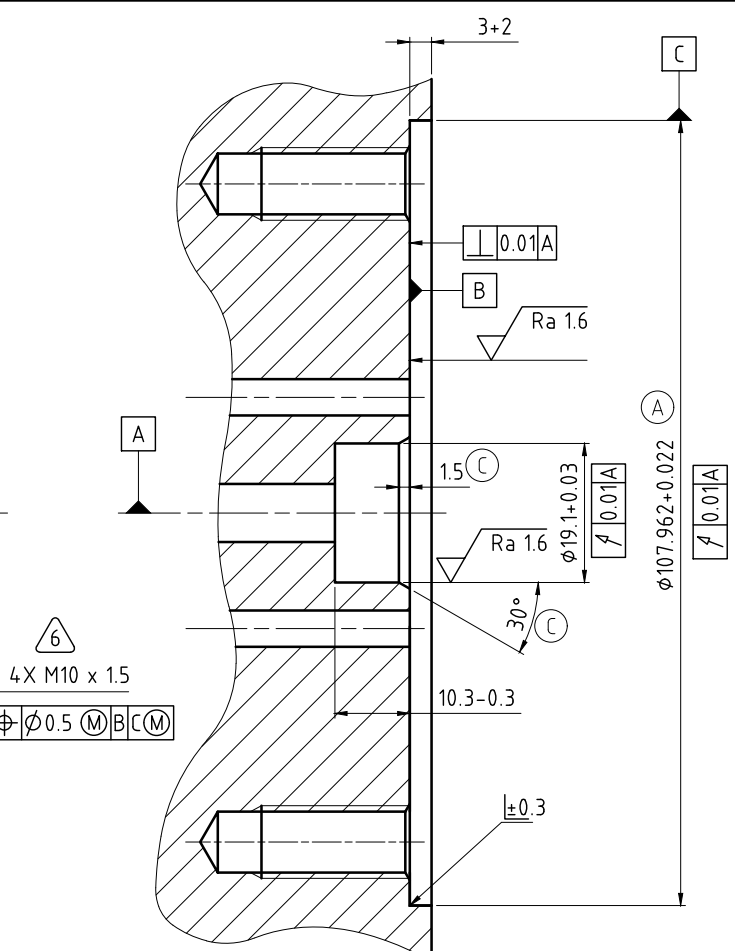
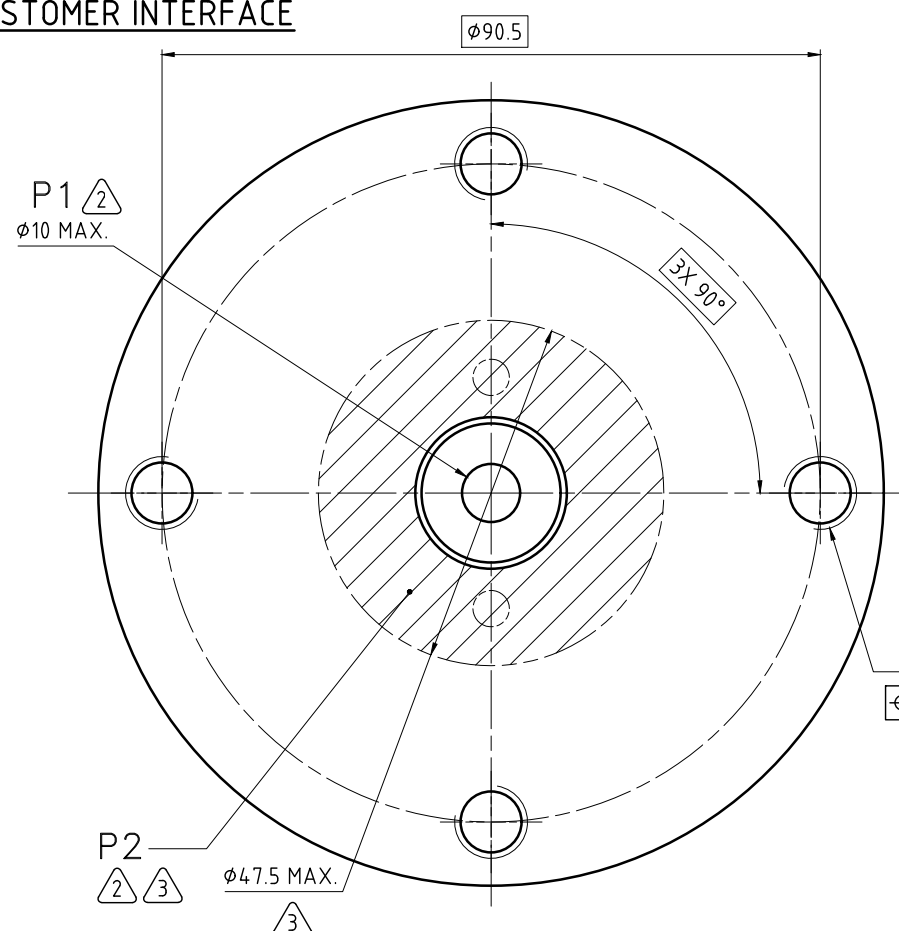
CONFIDENTIAL  
 THIS DOCUMENT CONTAINS CONFIDENTIAL AND PROPRIETARY INFORMATION OF DEUBLIN COMPANY. COPYING, USE, TRANSMISSION, DISTRIBUTION, AND DISCLOSURE ARE SUBJECT TO THE TERMS AND CONDITIONS CONTAINED IN YOUR AGREEMENT WITH DEUBLIN COMPANY. ALL RIGHTS RESERVED.

NOTES:

- 1 - WHEN ORDERING FROM DEUBLIN USE PART NUMBER: 2620-120-252.
- 2 - SEE OPERATING DATA CHART FOR P1 & P2 PASSAGE MEDIA.
- 3 - P2 PASSAGES TO BE WITHIN AREA INDICATED AND SHOULD BE SYMMETRICAL. 2X  $\phi 4$  MIN. RECOMMENDED.
- 4 - ALTERNATE P2 PASSAGE (PLUGGED).
- 5 - 2X AIR SEAL OILER.
- 6 - TIGHTEN MOUNTING BOLTS TO  $40 \pm 5$  Nm, USING A CROSS PATTERN TIGHTENING SEQUENCE.



CUSTOMER INTERFACE



(A) OPERATING DATA			
PASSAGE MEDIA		P1 INNER	P2 OUTER
		HYDRAULIC OIL	AIR
PRESSURE	MAXIMUM	70 bar	10 bar
	MINIMUM	-	-
FLOW RATE	MAXIMUM	69 L/min	35 NL/sec
	MINIMUM	-	-
TEMPERATURE	MAXIMUM	71 °C	71 °C
	MINIMUM	5 °C	5 °C
MAXIMUM SPEED		7000 min <sup>-1</sup>	
DRY RUN		NO	

DEUBLIN COMPANY  
 WAUKEGAN, ILLINOIS, U.S.A.

PROJECTION:

SCALE: 1.5:1  
 MATERIAL: INTERFACE CONTROL DRAWING

TITLE: DEUBLIN UNION 2-PASSAGE  
 HYDRAULIC OIL INNER / AIR OUTER

NO. 2620-120-252

DATE: 10/09/07  
 NAME: LG

DRN: 10/09/07  
 ENGR. LG  
 APPD.

UNLESS SPECIFICALLY TOLERANCED, ALL DIMENSIONS ARE CONSIDERED REFERENCE

ISSUE MODIFICATION ECO DATE SIGN

SHEET A2