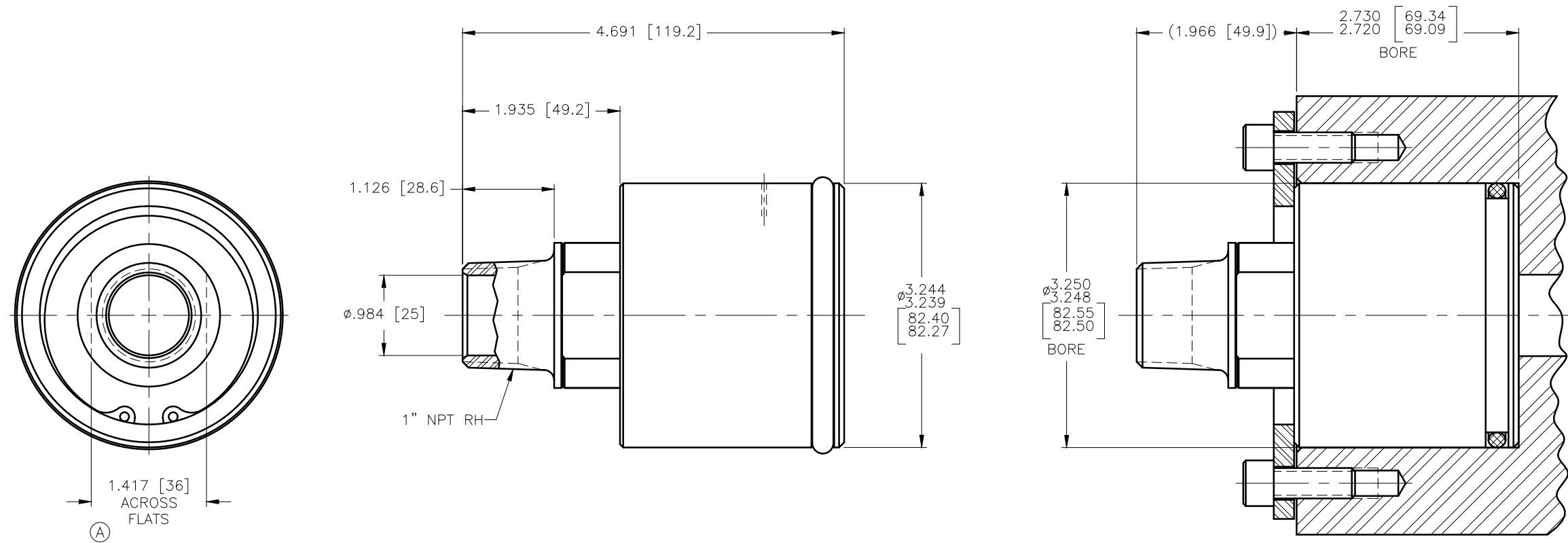


CONFIDENTIAL
 THIS DOCUMENT CONTAINS CONFIDENTIAL AND PROPRIETARY INFORMATION OF DEUBLIN COMPANY. COPYING, USE, TRANSMISSION, DISTRIBUTION, AND DISCLOSURE ARE SUBJECT TO THE TERMS AND CONDITIONS CONTAINED IN YOUR AGREEMENT WITH DEUBLIN COMPANY. ALL RIGHTS RESERVED.



INSTALLATION DETAIL

OPERATING PARAMETERS

MEDIA	AIR/HYDRAULIC	
MAX AIR PRESSURE	150 PSI	10 bar
MAX VACUUM	28" Hg	6.7kPa
MAX HYDRAULIC PRESSURE	1000 PSI	70 bar
MAX TEMPERATURE	250°F	121°C
MAX SPEED	1500 RPM	1500/MIN.

SCALE	1 = 1	DWG SIZE	
DRN	RM	06/14/02	
ENGR			
APPD			
PART NO.	350-221-002		
CUSTOMER			
LET.	REVISION	ECO	DATE SIGN
A	REVISED ROTOR FLATS	005187	08/09 NR

UNLESS SPECIFICALLY TOLERANCED, ALL DIMENSIONS ARE REFERENCE DIMENSIONS IN [] ARE IN MILLIMETERS.

DEUBLIN COMPANY
 WAUKEGAN, ILLINOIS, U.S.A.

TITLE: INTERFACE CONTROL DRAWING OF DEUBLIN UNION 350-221-002

DWG NO. 350-221-002 C.A.D. DRAWING