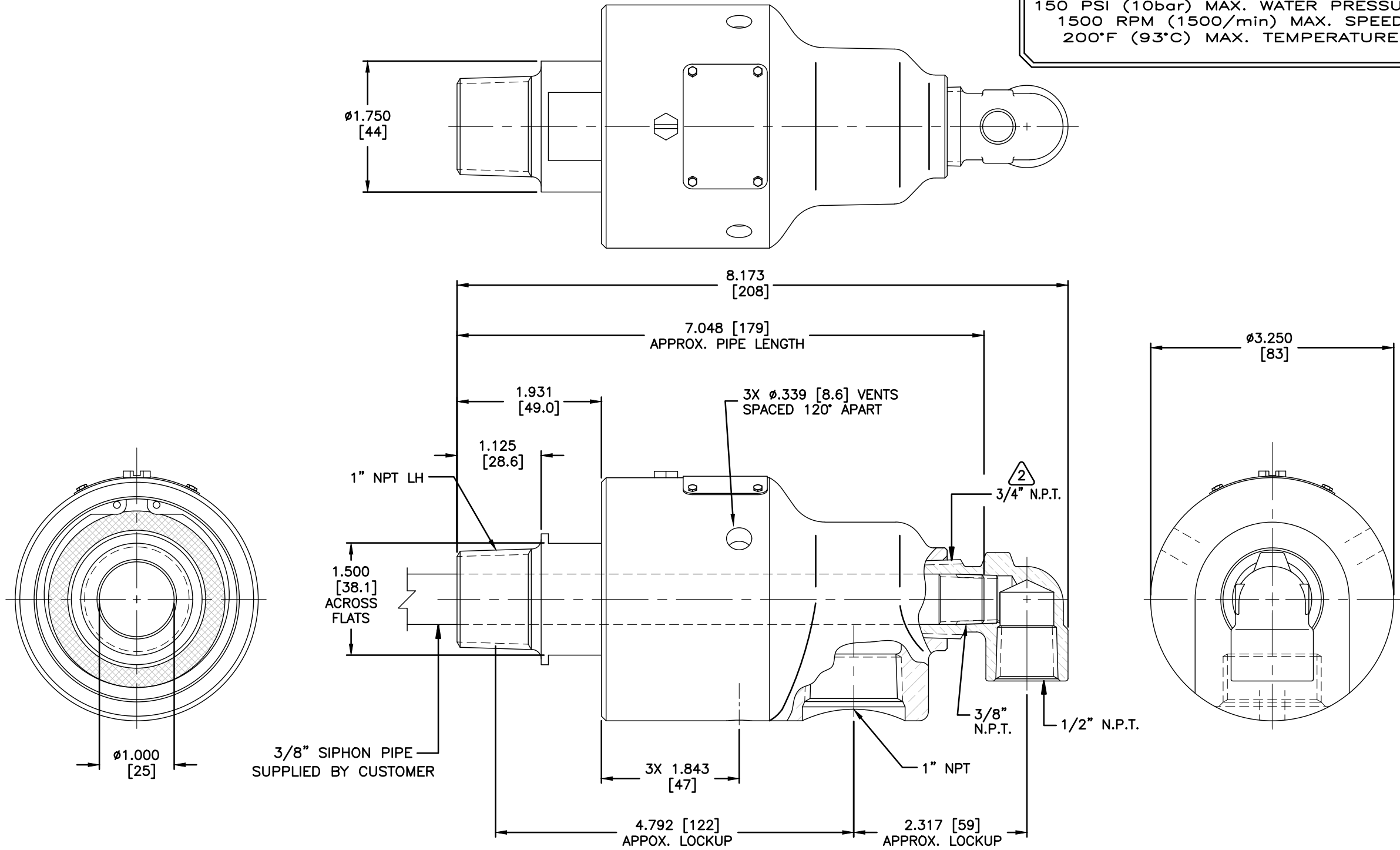


NOTES:
 1 - WHEN ORDERING FROM DEUBLIN USE PART NUMBER 357-000-003-083.

OPERATING DATA:
 WATER SERVICE
 150 PSI (10bar) MAX. WATER PRESSURE
 1500 RPM (1500/min) MAX. SPEED
 200°F (93°C) MAX. TEMPERATURE



CONFIDENTIAL
 THIS DOCUMENT CONTAINS CONFIDENTIAL AND PROPRIETARY INFORMATION OF DEUBLIN COMPANY. COPYING, USE, TRANSMISSION, DISTRIBUTION, AND DISCLOSURE ARE SUBJECT TO THE TERMS AND CONDITIONS CONTAINED IN YOUR AGREEMENT WITH DEUBLIN COMPANY. ALL RIGHTS RESERVED.

| | | | |
|-----------------|----------|----------|-----------|
| SCALE | FULL | DWG SIZE | C |
| DWG | LMG | 08/30/02 | |
| ENGR | | | |
| APPD | | | |
| PART NO. | | | |
| 357-000-003-083 | | | |
| CUSTOMER | | | |
| LET. | REVISION | ECO | DATE SIGN |

UNLESS SPECIFICALLY TOLERANCED, ALL DIMENSIONS ARE REFERENCE
 DIMENSIONS IN [] ARE IN MILLIMETERS.

DEUBLIN COMPANY
 WAUKEGAN, ILLINOIS, U.S.A.

TITLE: INTERFACE CONTROL
 DRAWING FOR UNION
 357-000-003-083

DWG. NO. 357-000-003-083-IC
 C.A.D. DRAWING