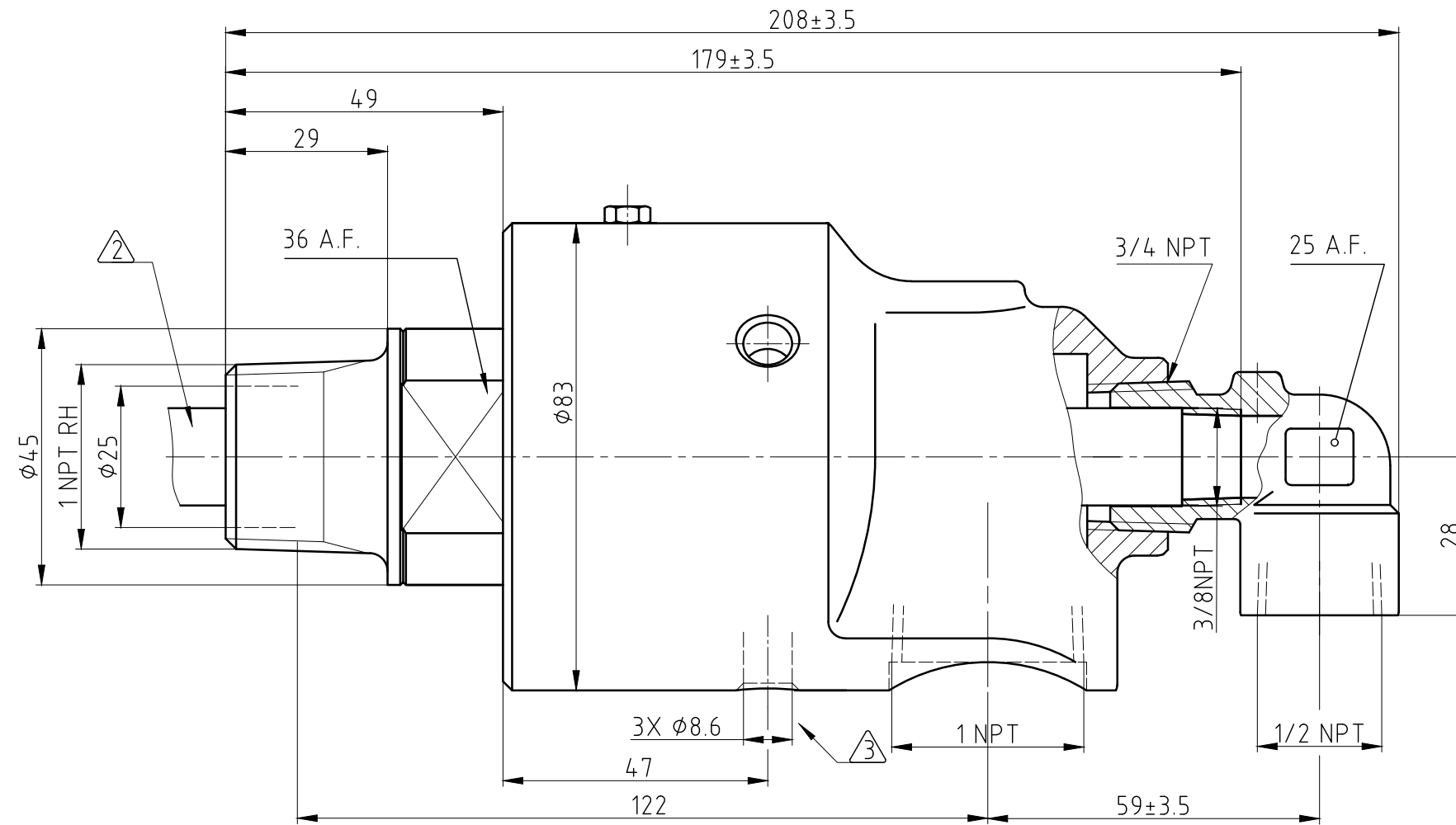


NOTES:

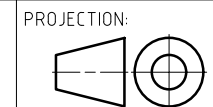
- 1 - USE INSTRUCTION MANUAL 040-550
- ② - SIPHON TUBE SUPPLIED BY CUSTOMER
- ③ - VENT HOLES

CONFIDENTIAL  
 THIS DOCUMENT CONTAINS CONFIDENTIAL AND PROPRIETARY INFORMATION OF DEUBLIN COMPANY. COPYING, USE, TRANSMISSION, DISTRIBUTION AND DISCLOSURE ARE SUBJECT TO THE TERMS AND CONDITIONS CONTAINED IN YOUR AGREEMENT WITH DEUBLIN COMPANY. ALL RIGHTS RESERVED.



OPERATING DATA

MEDIA	WATER
PRESSURE MAX.	10 bar
TEMPERATURE MAX.	90 °C
SPEED MAX:	1000 min <sup>-1</sup>
DRY RUN	NO



PROJECTION:   
 SCALE: 1:1  
 MATERIAL: INTERFACE CONTROL DRAWING

ISSUE	MODIFICATION	ECO	DATE	SIGN	DATE	NAME
					DRN. 16.06.2010	HJH
					ENGR. 16.06.2010	FD
					APPD.	

TITLE: DEUBLIN ROTATING UNION  
 DEUBLIN Drehdurchführung  
 NO. 357-050-002-083  
 SHEET A3

UNLESS SPECIFICALLY TOLERANCED, ALL DIMENSIONS ARE CONSIDERED REFERENCE