

CONFIDENTIAL
 THIS DOCUMENT CONTAINS CONFIDENTIAL AND PROPRIETARY
 INFORMATION OF DEUBLIN COMPANY. COPYING, USE,
 TRANSMISSION, DISTRIBUTION, AND DISCLOSURE ARE SUBJECT
 TO THE TERMS AND CONDITIONS CONTAINED IN YOUR
 AGREEMENT WITH DEUBLIN COMPANY. ALL RIGHTS RESERVED.

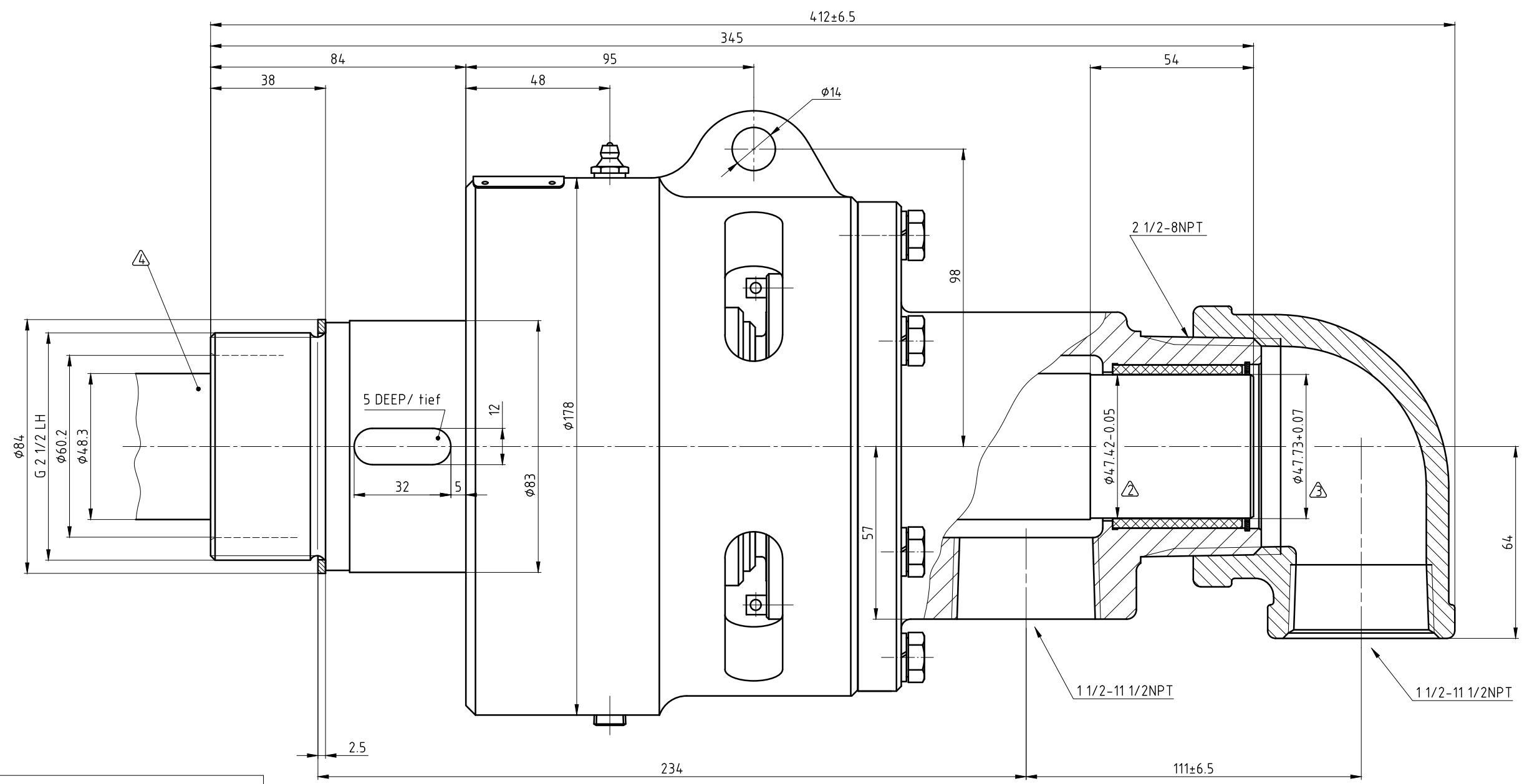
NOTES:

1 - USE INSTRUCTION MANUAL 40-561

△ - PIPE DIAMETER

△ - BUSHING DIAMETER

△ - SIPHON TUBE SUPPLIED BY CUSTOMER



OPERATING DATA	
MEDIA	WATER
PRESSURE MAX.	10 bar
TEMPERATURE MAX.	120 °C
SPEED MAX:	750 min ⁻¹
DRY RUN	NO
TORQUE	5.4 Nm

 DEUBLIN GmbH D-65719 HOFHEIM-WALLAU, GERMANY	PROJECTION:	SCALE: 1:1	TITLE: DEUBLIN ROTATING UNION DEUBLIN Drehdurchführung		
		MATERIAL:			
	DATE	NAME	NO. 6250-002-123-IC SHEET A2		
	DRN. 08.09.2008	HJH			
	ENGR. 08.09.2008	FD			
	APPD.				
ISSUE	MODIFICATION	ECO	DATE	SIGN	UNLESS SPECIFICALLY TOLERANCED, ALL DIMENSIONS ARE CONSIDERED REFERENCE