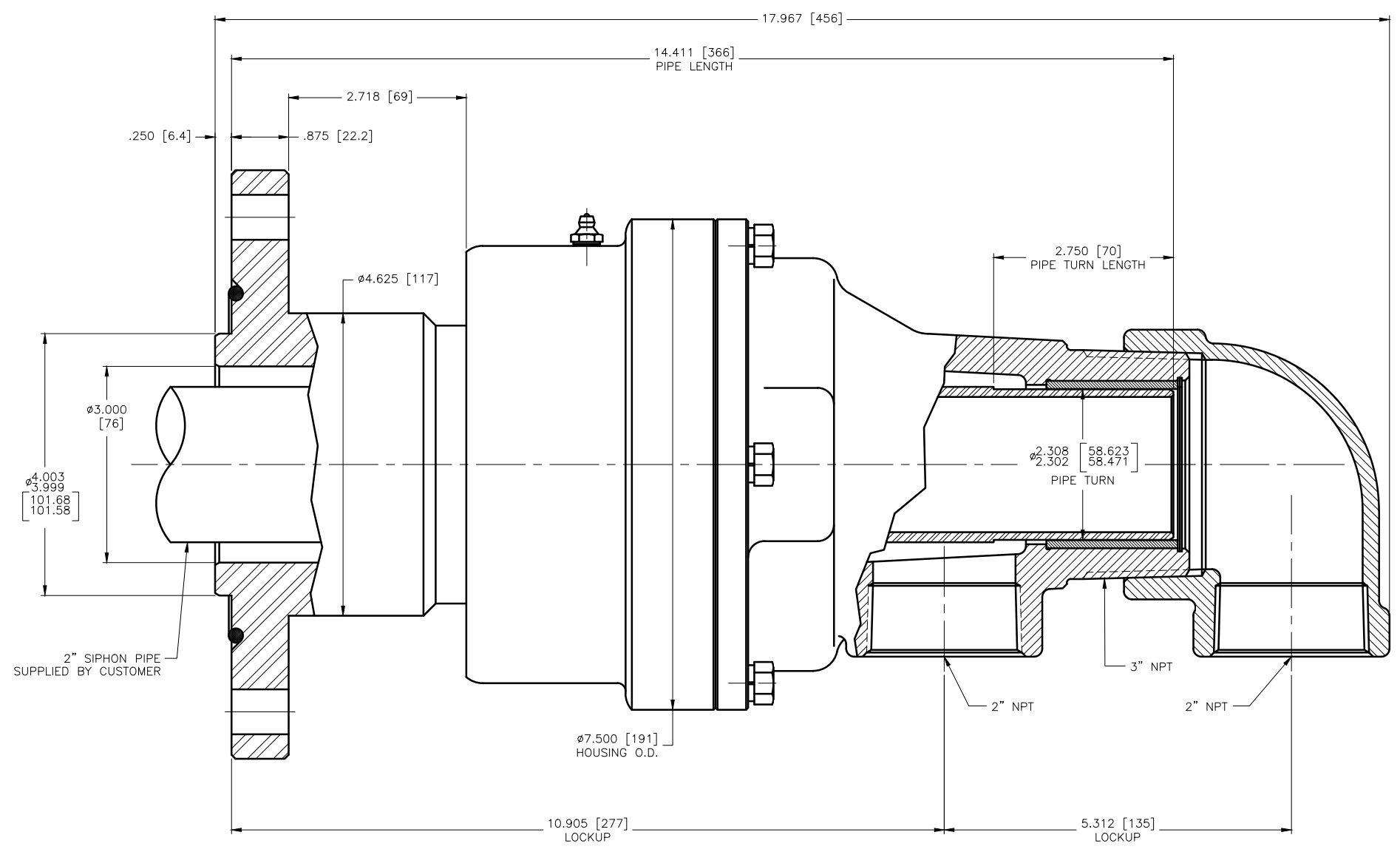
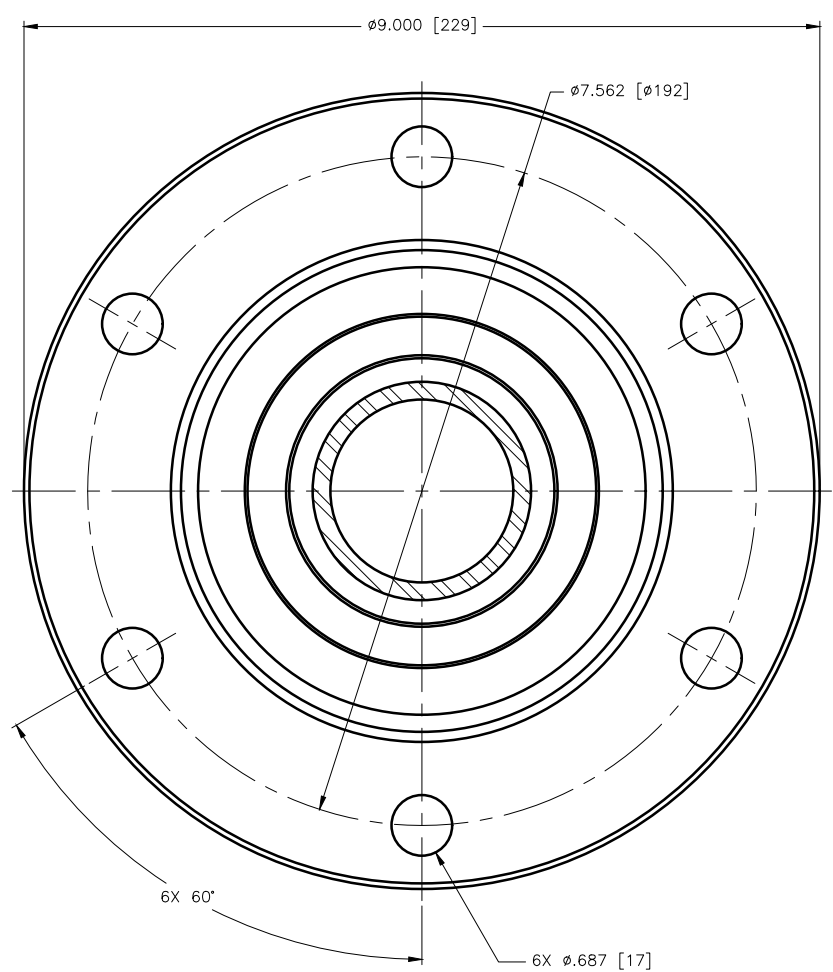


CONFIDENTIAL  
 THIS DOCUMENT CONTAINS CONFIDENTIAL AND PROPRIETARY INFORMATION OF DEUBLIN COMPANY. COPYING, USE, TRANSMISSION, DISTRIBUTION, AND DISCLOSURE ARE SUBJECT TO THE TERMS AND CONDITIONS CONTAINED IN YOUR AGREEMENT WITH DEUBLIN COMPANY. ALL RIGHTS RESERVED.



**OPERATING DATA:**  
 WATER/INTERMITTANT SATURATED  
 STEAM SERVICE  
 15 P.S.I. [1 bar] MAX. WATER PRESSURE  
 120 P.S.I. [8.2 bar] MAX. INTERMITTANT  
 SATURATED STEAM PRESSURE  
 500 R.P.M. [500/MIN] MAX. SPEED  
 250°F [121°C] MAX. TEMPERATURE

SCALE	1 = 1	UNLESS SPECIFICALLY TOLERANCED, ALL DIMENSIONS ARE REFERENCE DIMENSIONS IN [ ] ARE IN MILLIMETERS.	DEUBLIN COMPANY WAUKEGAN, ILLINOIS, U.S.A. TITLE: INTERFACE CONTROL DRAWING OF DEUBLIN UNION 857-002-132 DWG NO. 857-002-132
DRN	NR 03/09/10		
ENGR	TW 03/09/10		
APPD	TW 03/09/10		
PART NO.	857-002-132		
CUSTOMER			
LET.	REVISION	ECO	DATE
			SIGN