

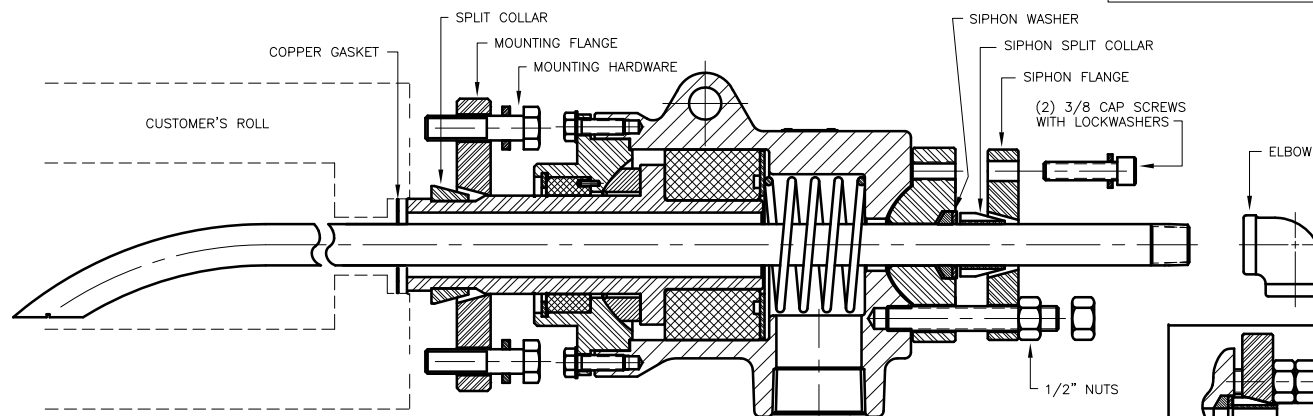
DISASSEMBLY

1. REMOVING UNION FROM ROLL:

REMOVE ELBOW. REMOVE CAP SCREWS, LOCKWASHERS, 1/2" NUTS, SIPHON FLANGE, SIPHON SPLIT COLLAR, AND SIPHON WASHER.

REMOVE MOUNTING FLANGE HARDWARE. BACK OFF MOUNTING FLANGE AND REMOVE SPLIT COLLAR.

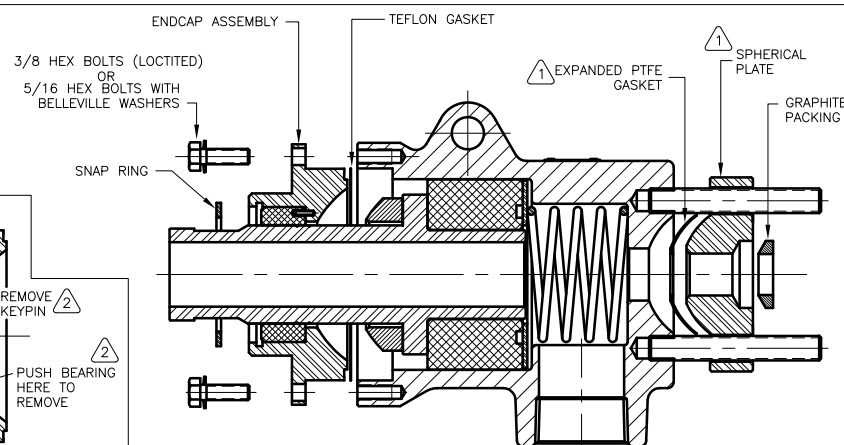
SLIDE UNION AND GASKET OFF SIPHON PIPE; DISCARD COPPER GASKET.



2. REMOVE PACKING FROM SPHERICAL PLATE AND DISCARD. DISCARD EXPANDED PTFE GASKET. ON UNIONS WITHOUT SIPHON ADJUSTMENT (C15B-001, C15D-001, AND C15R-001), PACKING IS IN REAR OF HOUSING, AND THERE IS NO SPHERICAL PLATE OR EXPANDED PTFE GASKET.

DISASSEMBLE 3/8" OR 5/16" HEX BOLTS AND BELLEVILLE WASHERS; DISCARD WASHERS.

REMOVE SNAP RING AND DISCARD (FOR DUAL BEARING MODELS ONLY). PULL ENDCAP ASSEMBLY OFF OF UNION; REMOVE AND DISCARD TEFLON GASKET.



VIEW FOR UNIONS WITHOUT SIPHON ADJUSTMENT

NOTES:

1 - THESE ITEMS FOR UNIONS WITH SIPHON ADJUSTMENT ONLY.

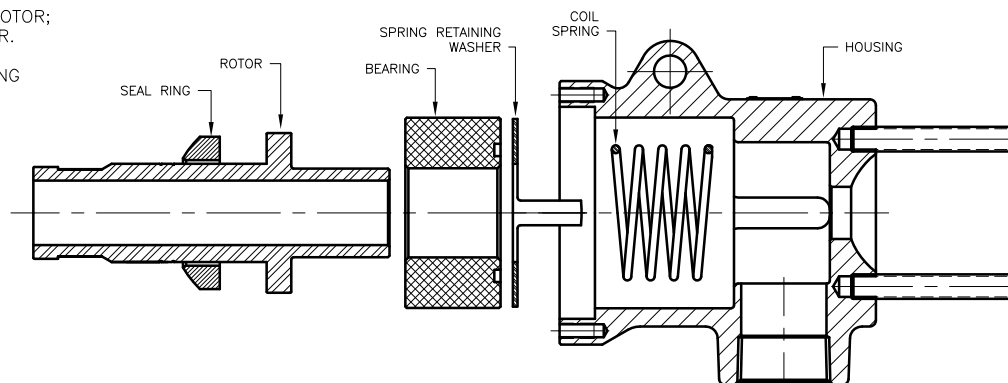
2 - THESE ITEMS FOR DUAL BEARING UNIONS ONLY.

FOR REPAIR KITS ON DUAL BEARING MODELS ONLY:

DISASSEMBLE BEARING AND KEYPIN FROM ENDCAP AND DISCARD. NOT REQUIRED FOR REBUILD KITS; THEY INCLUDE NEW ENDCAP WITH BEARING AND KEYPIN PRE-ASSEMBLED.

3. REMOVE SEAL RING AND DISCARD. REMOVE ROTOR; DISCARD FOR REBUILD BUT RETAIN FOR REPAIR.

REMOVE AND DISCARD CARBON BEARING, SPRING RETAINING WASHER, AND COIL SPRING.



CONFIDENTIAL

THIS DOCUMENT CONTAINS PROPRIETARY INFORMATION AND IS NOT TO BE TRANSMITTED, REPRODUCED, USED OR DISCLOSED TO ANYONE WITHOUT THE WRITTEN PERMISSION OF THE DEUBLIN COMPANY.

DEUBLIN COMPANY
WAUKEGAN, ILLINOIS, U.S.A.

TITLE: REPAIR INSTRUCTIONS
FOR DEUBLIN HPS
SERIES UNIONS

NO. 031-074 (SHT 1 OF 2)

REV	DESCRIPTION	DATE	BY	CHKD
1	WAS DA-074	03/01/09	09/14	RMiko
LET.	REVISION	ECO	DATE	SIGN


EQUIPMENT REF:

ASSY/TEST FIXTURES
REQUIRED:

SCALE	1:2	REV	C
DRW	LG	06/21/01	
ENGR	LG	06/21/01	
APPD			

UNLESS OTHERWISE
SPECIFIED
TOLERANCES ±.010.
DIMENSIONS IN []
ARE IN MILLIMETERS.

031-074 (SHT 2 OF 2)

- | | | | | | | | | | | | | | | | |
|-----------------|--|--|--|------------------------------|--|--|--|---|--|--|--|--|--|--|--|
| | | | | EQUIPMENT REF: | | | | SCALE 1:2 REV C
DIM LG 06/21/01
DIM LG 06/21/01
APPD | | | |  DEUBLIN COMPANY
WAUKEGAN, ILLINOIS, U.S.A. | | | |
| | | | | ASSY/TEST FIXTURES REQUIRED: | | | | UNLESS OTHERWISE SPECIFIED
TOLERANCES ±.010.
DIMENSIONS IN [] ARE IN MILLIMETERS. | | | | TITLE: REPAIR INSTRUCTIONS
FOR DEUBLIN HPS
SERIES UNIONS | | | |
| NONE WAS DA-074 | | | | 030109 09/14 RMika | | | | NO. | | | | C.A.D. DRAWING | | | |
| LET. REVISION | | | | ECO DATE SIGN | | | | 031-074 (SHT 2 OF 2) | | | | | | | |