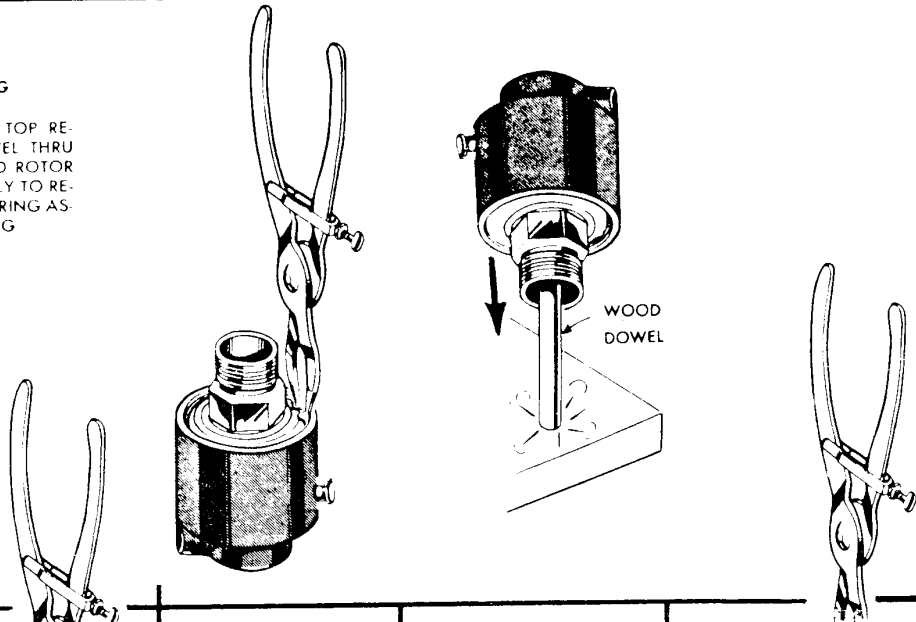


INSTRUCTION FOR DISMANTLING

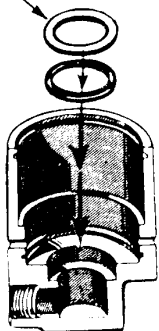
USE NO. 5 TRUARC PLIERS TO REMOVE TOP RETAINING RING. INSERT WOODEN DOWEL THRU ROTOR TO BOTTOM OF HOUSING. HOLD ROTOR AND TAP DOWEL GENTLY TO REMOVE ROTOR AND BEARING ASSEMBLY FROM HOUSING



ASSEMBLY INSTRUCTIONS

STEP 1

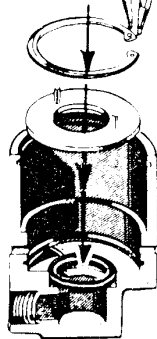
BACK-UP WASHER



INSERT "O" RING CAREFULLY.

THE "O" RING SHOULD BE GREASED FOR EASE OF ASSEMBLY.

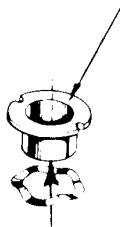
STEP 2



INSTALL STEEL RETAINING PLATE. PINS MUST BE UP. FASTEN WITH SNAP RING. BEVEL MUST BE UP IN ORDER TO FIT IN GROOVE PROPERLY.

STEP 3

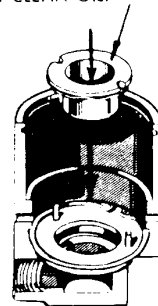
THIS LAPPED SEALING SURFACE MUST BE CLEAN AND FREE FROM SCRATCHES. HANDLE CAREFULLY



ASSEMBLE STAINLESS STEEL WAVE SPRING IN HOUSING PRIOR TO LOCATING SEAL.

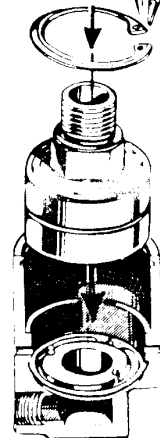
STEP 4

WHEN SEAL IS IN POSITION, WIPE SEALING SURFACE WITH TISSUE TO INSURE CLEANLINESS. LUBRICATE WITH CLEAN OIL.



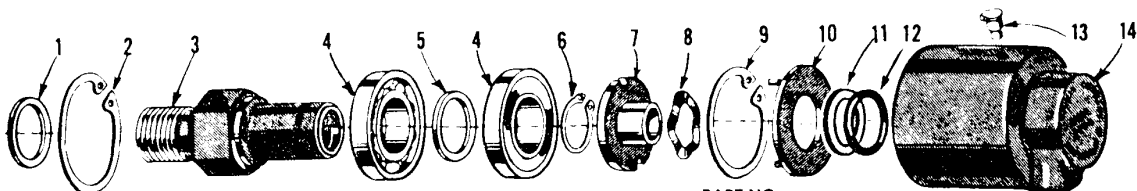
INSERT SPRING AND SEAL ASSEMBLY INTO POSITION. PUSH IT THRU "O" RING GENTLY. BE SURE SLOTS ENGAGE PINS OF RETAINING PLATE.

STEP 5



INSTALL ROTOR AND BEARING ASSEMBLY IN HOUSING. BE SURE TO START IT STRAIGHT. LOCK IN PLACE WITH SNAP RING. BEVEL MUST BE UP IN ORDER TO FIT GROOVE PROPERLY.

PARTS LIST - MODEL 2200 UNION



REF. NO.	NAME	PART NO.	REF. NO.	NAME	PART NO.
1	Gasket	2200-1	7	Floating Seal	2200-7
2	Snap Ring	2200-2	8	Wave Spring	2200-8
3	Rotor 1"-14 N.F. R.H.	2200-3	9	Snap Ring	2200-9
	Rotor 1"-14 N.F. L.H.	2200-27	10	Retaining Plate	2200-10
	Rotor 1"-14 N.F. R.H. Pilot	2200-16	11	Back-Up Washer	250-65
	Rotor 1"-14 N.F. L.H. Pilot	2200-18	12	"O" Ring	250-61
4	Ball Bearing	2200-4	13	Oil Cup	1105-8
5	Bearing Spacer	2200-5	14	Housing	2200-13
6	Spirolox	2200-30	15	Truarc Pliers #5	2200-15