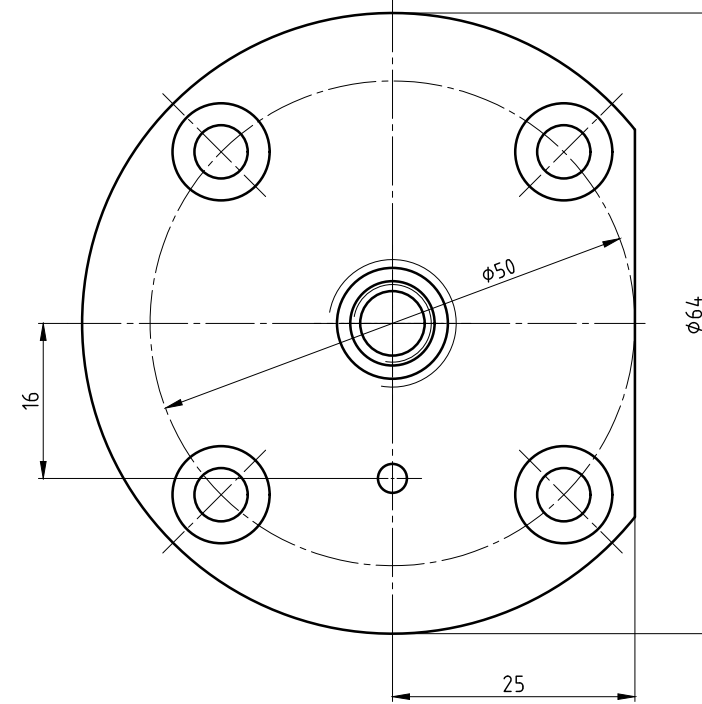
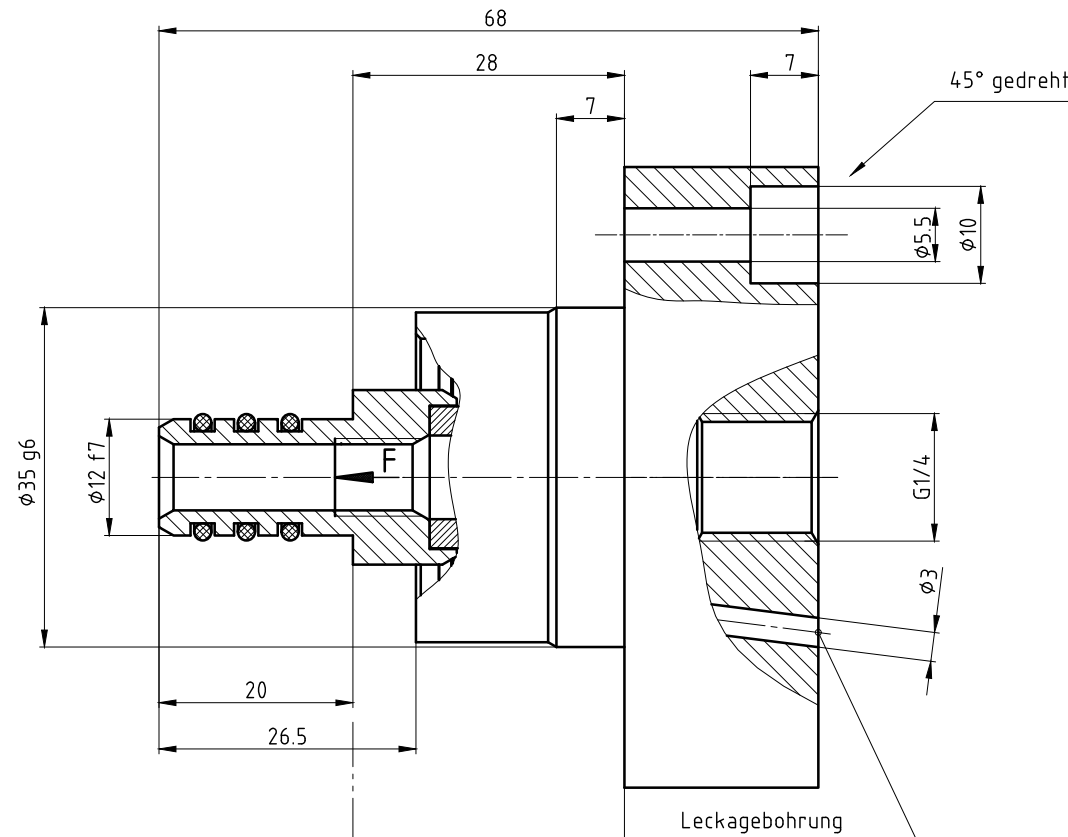
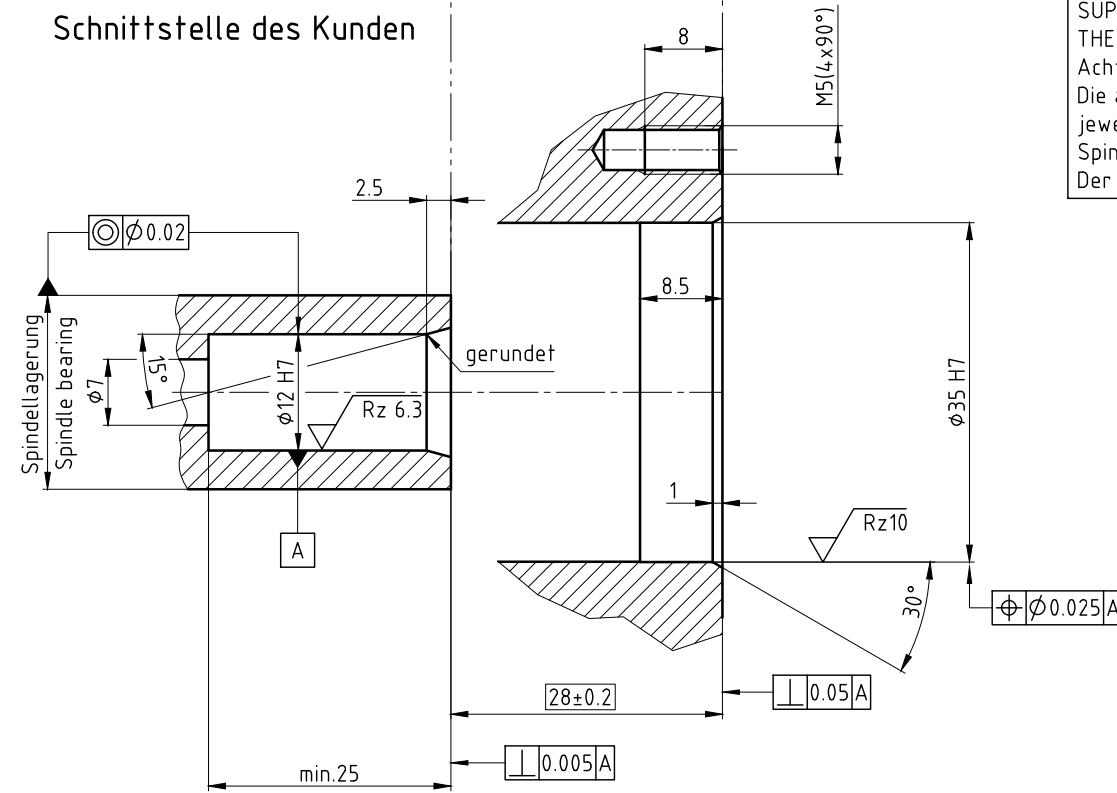


CONFIDENTIAL  
 THIS DOCUMENT CONTAINS CONFIDENTIAL AND PROPRIETARY INFORMATION OF DEUBLIN COMPANY. COPYING, USE, TRANSMISSION, DISTRIBUTION, AND DISCLOSURE ARE SUBJECT TO THE TERMS AND CONDITIONS CONTAINED IN YOUR AGREEMENT WITH DEUBLIN COMPANY. ALL RIGHTS RESERVED.

φ35	q6	-0.009	34.991
φ35	H7	+0.025	35.025
φ12	f7	-0.016	11.984
φ12	H7	+0.018	12.018
Maß	Passung	0.000	12.000



Customer's Interface  
 Schnittstelle des Kunden



ATTENTION!  
 OBSERVE THE AXIAL SPINDLE LOAD, RESULTING FROM THE ACTIVE PRESSURE LOADED AREA AND THE MEDIA SUPPLY PRESSURE!  
 THE RISE OF FORCE AMOUNTS 12.7 N/bar.  
 Achtung!  
 Die aus der hydraulisch aktiven Fläche und dem jeweiligen Druck resultierende Axialbelastung der Spindel beachten!  
 Der Anstieg der Axialkraft beträgt 12.7 N/bar.

OPERATING DATA / Betriebsdaten		
MEDIA/Medium	COOLANT	KSS
p max.	2000 PSI	140 bar
Q max.	13.2 GPM	50 l/min
n max.	20000 RPM	20000 1/min
t max.	250 °F	120 °C
FILTRATION/Filterung	60 µm	60 µm

**DEUBLIN GmbH**  
 D-65719 HOFHEIM-WALLAU, GERMANY

PROJECTION:

SCALE: 2:1 Z:\UNIONS\

MATERIAL: INTERFACE CONTROL DRAWING

DATE	NAME	TITLE
DRN. 16.08.2005	H.-J. Huhn	DEUBLIN BEARINGLESS UNION DEUBLIN Dichtungssatz
ENGR. 17.08.2005	H. Schmid	
APPD.		

NO. 1117-538-DD SHEET A2

UNLESS SPECIFICALLY TOLERANCED, ALL DIMENSIONS ARE CONSIDERED REFERENCE

ISSUE	MODIFICATION	ECO	DATE	SIGN
a	MET/DWG/NO DRY RUN	06041	02.03.06	FD