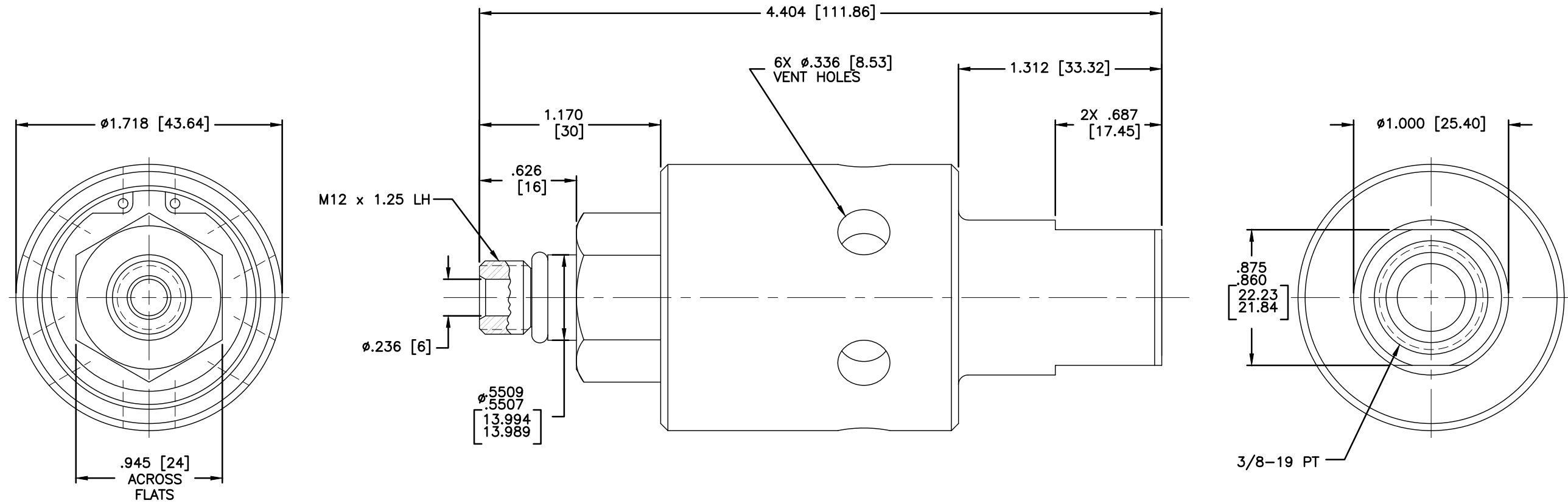


NOTES:

- 1 - WHEN ORDERING FROM DEUBLIN USE PART NUMBER: 1116-580-343.
- 2 - OPERATION AT MAXIMUM PRESSURE COMBINED WITH MAXIMUM SPEED SHOULD BE AVOIDED. IF OPERATING CONDITIONS ARE MARGINAL, PLEASE CONSULT DEUBLIN ENGINEERING.
- 3 - RECOMMENDED FILTRATION IS 25 MICRONS.
- 4 - DO NOT RUN DRY.



OPERATING DATA		
MEDIA	COOLANT	
MAX COOLANT PRESSURE	1000 PSI	70 bar
MAX SPEED	10,000 RPM	10,000/min
MAX FLOW RATE	13.8 GPM	50 L/min
MAX TEMPERATURE	250°F	121°C

CONFIDENTIAL
 THIS DOCUMENT CONTAINS PROPRIETARY INFORMATION AND IS NOT TO BE TRANSMITTED, REPRODUCED, USED OR DISCLOSED TO ANYONE WITHOUT THE WRITTEN PERMISSION OF THE DEUBLIN COMPANY.

EQUIPMENT REF:				SCALE	2:1	DWG SIZE	C
ASSY/TEST FIXTURES REQUIRED:				DRN	RM	01/23/03	
				ENGR	RC	01/23/03	
				APPD	RC	01/23/03	
				UNLESS OTHERWISE SPECIFIED TOLERANCES $\pm .010$. DIMENSIONS IN [] ARE IN MILLIMETERS.			
LET.	REVISION	ECO	DATE	SIGN	TITLE: INTERFACE CONTROL DRAWING FOR DEUBLIN UNION 1116-580-343		
				NO. 1116-580-343-IC C.A.D. DRAWING			

