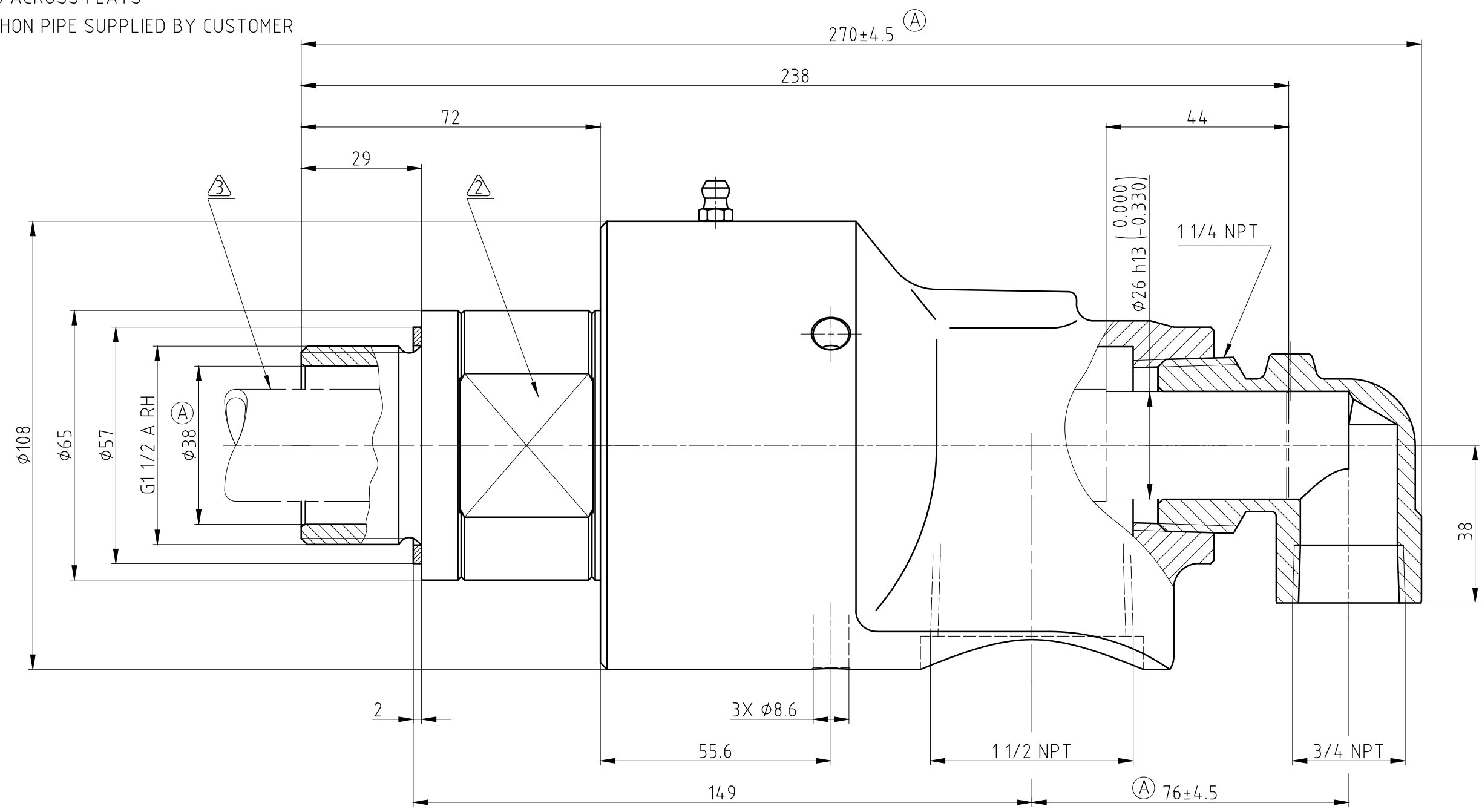


NOTES:

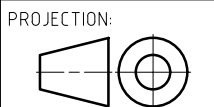
- 1 - USE INSTRUCTION MANUAL 040-550!
- ⚠ - 55 ACROSS FLATS
- ⚠ - SIHON PIPE SUPPLIED BY CUSTOMER

CONFIDENTIAL
 THIS DOCUMENT CONTAINS CONFIDENTIAL AND PROPRIETARY INFORMATION OF DEUBLIN COMPANY. COPYING, USE, TRANSMISSION, DISTRIBUTION, AND DISCLOSURE ARE SUBJECT TO THE TERMS AND CONDITIONS CONTAINED IN YOUR AGREEMENT WITH DEUBLIN COMPANY. ALL RIGHTS RESERVED.



OPERATING DATA

MEDIA	★ WATER	SATURATED STEAM (INTERMITTENT)	HOT OIL
PRESSURE MAX.	50 bar	1 bar	6.6 bar
SPEED MAX.	1000 min ⁻¹	1000 min ⁻¹	1000 min ⁻¹
TEMPERATURE MAX.	120 °C	120 °C	120 °C
DRY RUN (WITHOUT ANY MEDIA)	NO		
ADDITIONAL INFORMATION	★ PRESSURES EXCEEDING 8 bars ONLY PERMISSIBLE WITH COLD WATER (50°C MAX.)		



PROJECTION:	SCALE: 1:1
MATERIAL:	INTERFACE CONTROL DRAWING
TITLE:	DEUBLIN ROTATING UNION DEUBLIN Drehdurchführung
NO.	555-000-198468
SHEET	A3

DATE	NAME
DRN. 19.04.2010	HS
ENGR. 19.04.2010	CW
APPD.	

ISSUE	MODIFICATION	ECO	DATE	HS	SIGN
A	UPDATE IMS	00	19.04.10	HS	

UNLESS SPECIFICALLY TOLERANCED, ALL DIMENSIONS ARE CONSIDERED REFERENCE