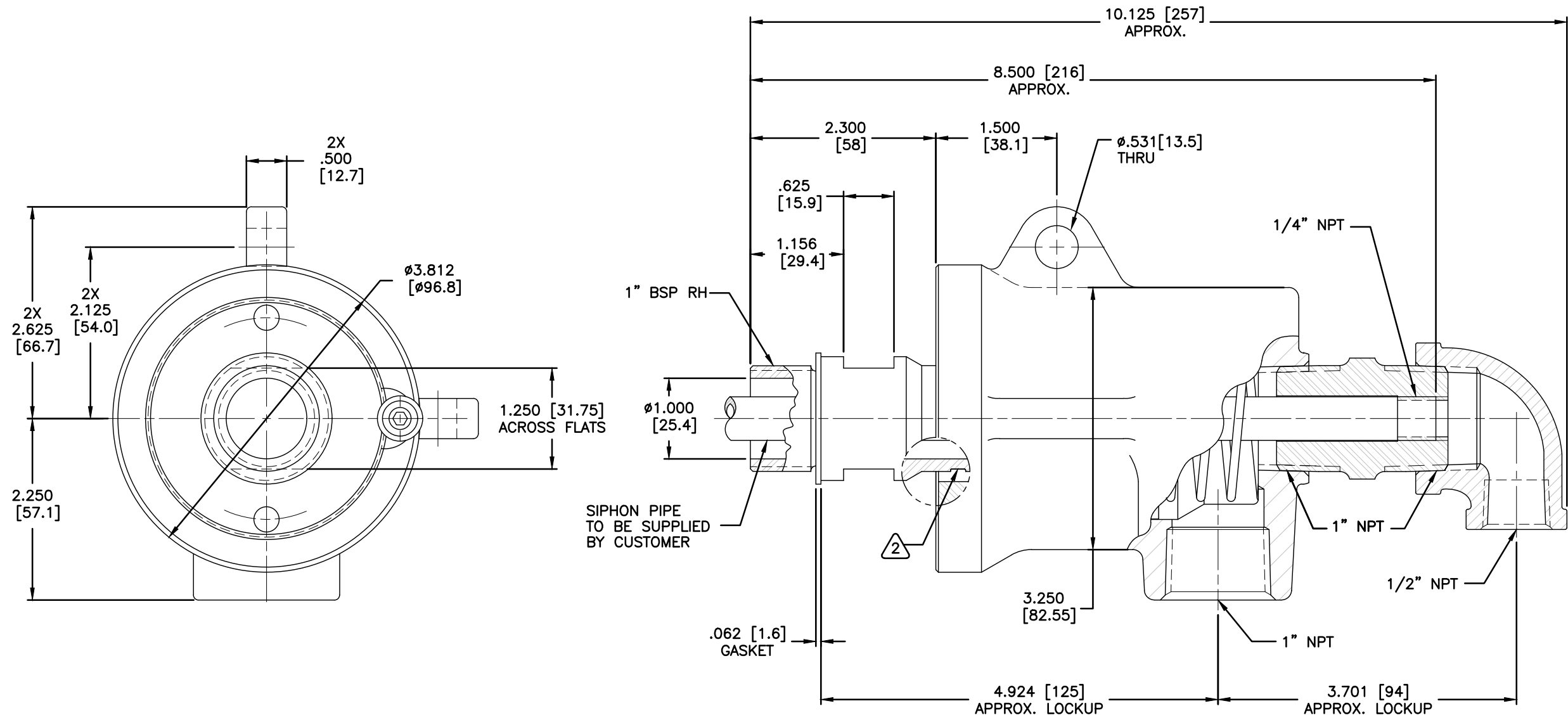


NOTES:

- 1 - WHEN ORDERING FROM DEUBLIN USE PART NUMBER: 9100-001-113-400.
- 2 - SEAL WEAR INDICATOR BECOMES VISIBLE WHEN SEAL IS WORN AND REPLACEMENT SHOULD BE SCHEDULED.



OPERATING CONDITIONS
 STEAM SERVICE
 150 P.S.I. (10 bar) MAX. PRESSURE
 366°F (186°C) MAX. TEMPERATURE
 400 R.P.M. MAX. SPEED

CONFIDENTIAL
 THIS DOCUMENT CONTAINS CONFIDENTIAL AND PROPRIETARY INFORMATION OF DEUBLIN COMPANY. COPYING, USE, TRANSMISSION, DISTRIBUTION, AND DISCLOSURE ARE SUBJECT TO THE TERMS AND CONDITIONS CONTAINED IN YOUR AGREEMENT WITH DEUBLIN COMPANY. ALL RIGHTS RESERVED.

SCALE	FULL	DWG SIZE	C
DRN	RM	11/02/05	
ENGR	ARS	11/02/05	
APPD	ZK	11/02/05	
PART NO.			
9100-001-113-400			
CUSTOMER			
LET.	REVISION	ECO	DATE SIGN

UNLESS SPECIFICALLY TOLERANCED, ALL DIMENSIONS ARE REFERENCE
 DIMENSIONS IN [] ARE IN MILLIMETERS.

DEUBLIN COMPANY
 WAUKEGAN, ILLINOIS, U.S.A.

TITLE: INTERFACE CONTROL
 DRAWING FOR UNION
 9100-001-113-400

DWG. NO. 9100-001-113-400-IC
 C.A.D. DRAWING