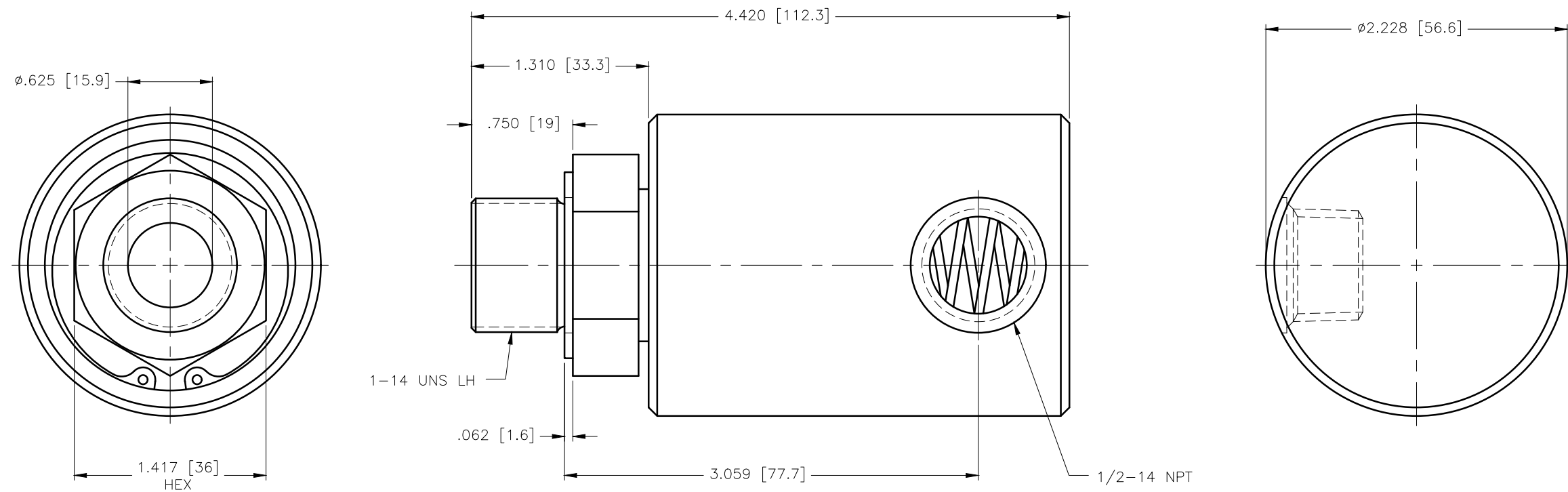
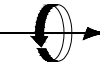


CONFIDENTIAL  
 THIS DOCUMENT CONTAINS CONFIDENTIAL AND PROPRIETARY INFORMATION OF DEUBLIN COMPANY. COPYING, USE, TRANSMISSION, DISTRIBUTION, AND DISCLOSURE ARE SUBJECT TO THE TERMS AND CONDITIONS CONTAINED IN YOUR AGREEMENT WITH DEUBLIN COMPANY. ALL RIGHTS RESERVED.



OPERATING PARAMETERS

MEDIA	AIR/HYDRAULIC	
MAX AIR PRESSURE	150 PSI	10 bar
MAX VACUUM	28"Hg	6.7kPa
MAX HYDRAULIC PRESSURE	750 PSI	50 bar
MAX TEMPERATURE	250°F	121°C
MAX SPEED	3500 RPM	3500/MIN.

SCALE	1.6667:1	DWG SIZE		UNLESS SPECIFICALLY TOLERANCED, ALL DIMENSIONS ARE REFERENCE	 <b>DEUBLIN</b> COMPANY WAUKEGAN, ILLINOIS, U.S.A.
DRN	NR	10/27/08			
ENGR	SS	10/27/08			
APPD	SS	10/27/08			
PART NO.	1205-000-002			DIMENSIONS IN [ ] ARE IN MILLIMETERS.	TITLE: INTERFACE CONTROL DRAWING OF DEUBLIN UNION 1205-000-002
CUSTOMER					
LET.	REVISION	ECO	DATE	SIGN	DWG NO. 1205-000-002 C.A.D DRAWING