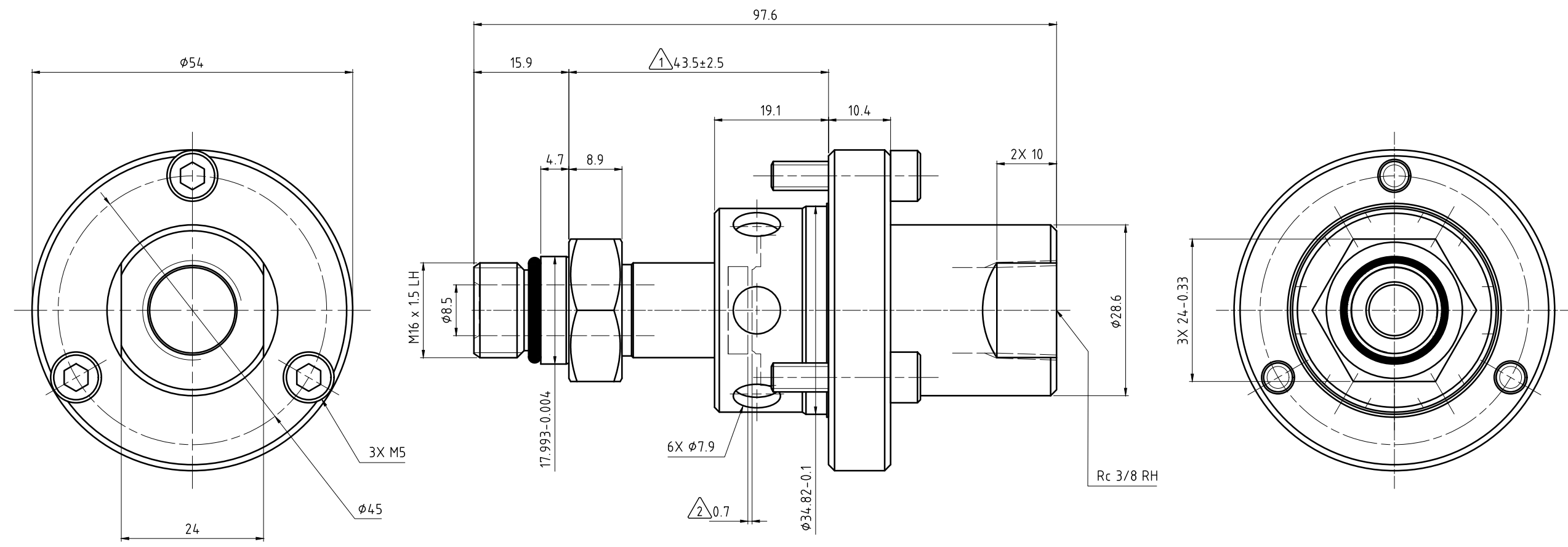


NOTES:

- ① - MOUNTING DIMENSION.
- ② - FLOATING SEAL ASSEMBLY ACTUATION DISTANCE.



OPERATING DATA			
MEDIA		COOLANT	MQL
MEDIA	MAXIMUM	140 bar	10 bar
PRESSURE	MINIMUM	4 bar	4 bar
FLOW RATE	MAXIMUM	82 L/min	3810 NL/min
	MINIMUM	6 L/min	360 NL/min
TEMPERATURE	MAXIMUM	70 °C	70 °C
	MINIMUM	5 °C	5 °C
MAXIMUM SPEED		30000 min <sup>-1</sup>	30000 min <sup>-1</sup>
AXIAL FORCE		12.7 N/bar	
DRY RUN		UNPRESSURIZED ONLY	
RECOMMENDED FILTRATION		ISO 4406 CLASS 17/15/12	

		PROJECTION:	SCALE: 2:1
		MATERIAL: INTERFACE CONTROL DRAWING	
		DATE: 12/20/2004 NAME: RM	TITLE: DEUBLIN UNION
		ENGR: 12/20/2004 NAME: ZK	
		APPD.	
D ISSUE	UPDATED TO MS MODIFICATION	027132 ECO	02/14 DATE
		RA SIGN	NO. 1129-047-301
UNLESS SPECIFICALLY TOLERANCED, ALL DIMENSIONS ARE CONSIDERED REFERENCE			SHEET A2