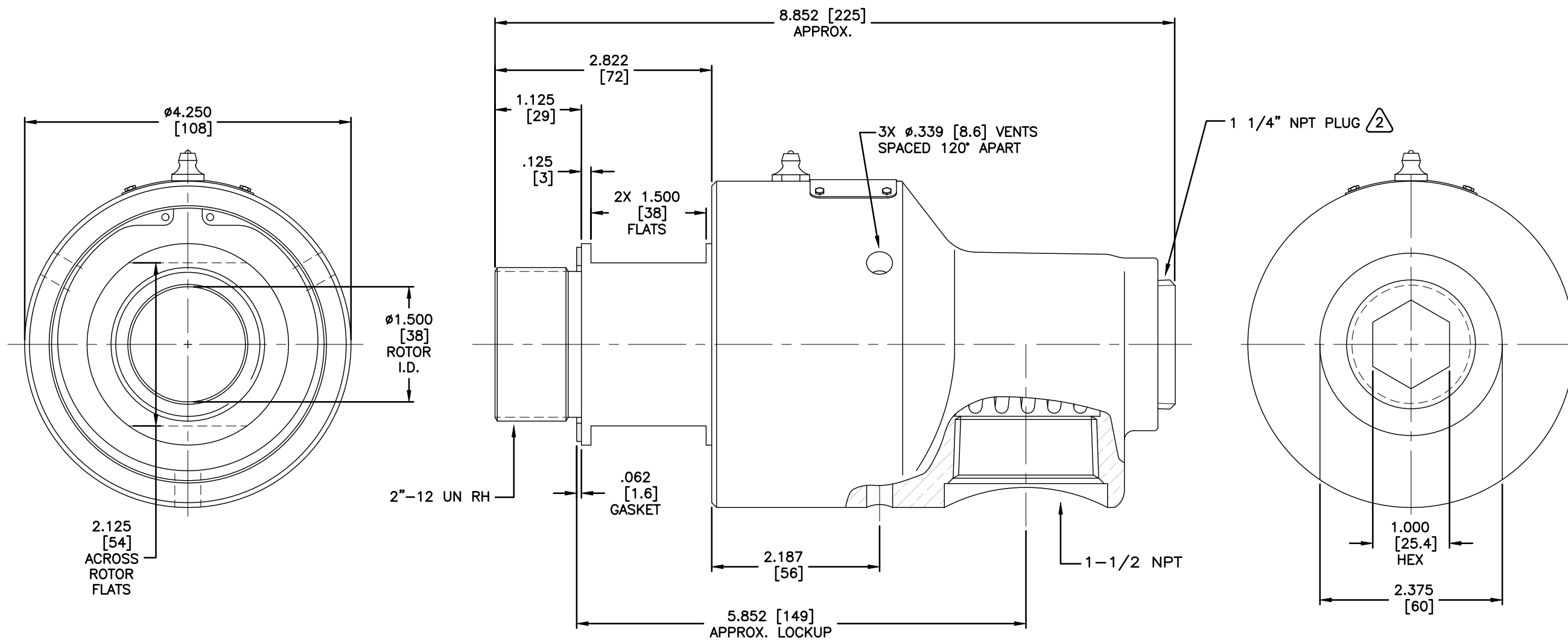
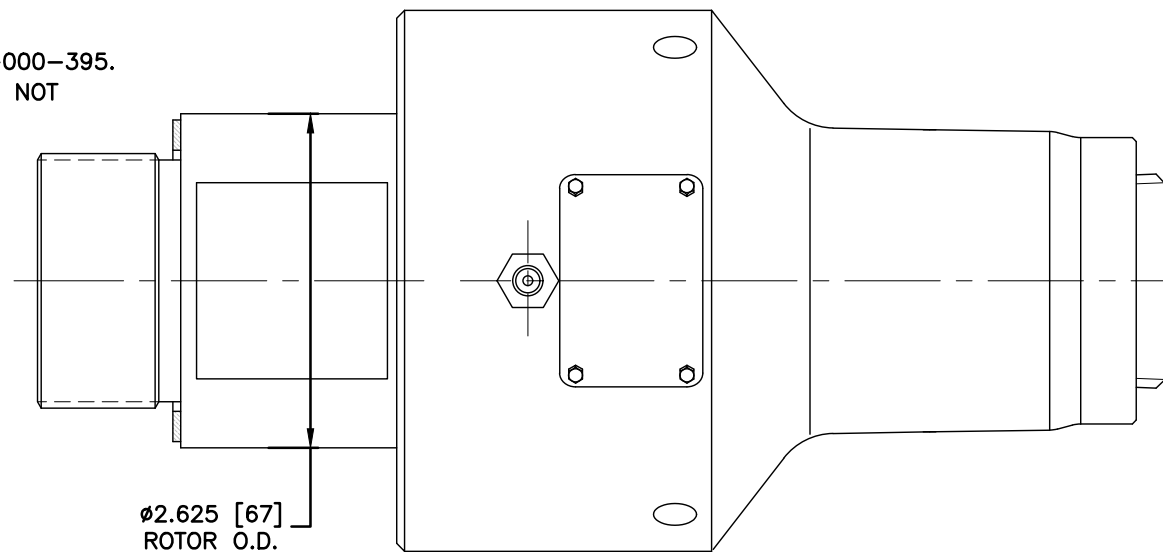


NOTES:

- 1 - WHEN ORDERING FROM DEUBLIN USE PART NUMBER: 555-000-395.
- 2 - PLUG INSTALLED HAND TIGHT FROM FACTORY. IF PORT IS NOT UTILIZED, TIGHTEN BEFORE USE.



CONFIDENTIAL
 THIS DOCUMENT CONTAINS PROPRIETARY INFORMATION AND IS NOT TO BE TRANSMITTED, REPRODUCED, USED OR DISCLOSED TO ANYONE WITHOUT THE WRITTEN PERMISSION OF THE DEUBLIN COMPANY.

EQUIPMENT REF:				SCALE	FULL	DWG SIZE	C
ASSY/TEST FIXTURES REQUIRED:				DRN	LG	12/04/02	
UNLESS OTHERWISE SPECIFIED TOLERANCES $\pm .010$. DIMENSIONS IN [] ARE IN MILLIMETERS.				ENGR			
A UPDATED OPERATING PARAMETERS TO STANDARD				EGR	12/04	RM	
LET.	REVISION	ECO	DATE	SIGN	TITLE: INTERFACE CONTROL DRAWING FOR UNION 555-000-395		
				NO. 555-000-395-IC			C.A.D DRAWING

DEUBLIN COMPANY
 WAUKEGAN, ILLINOIS, U.S.A.